

PUBLIC LAND SURVEY MONUMENT RECORD

TYPE OF MONUMENT: HARRISON (BROKEN-TOP)
 ADAMS COUNTY COORDINATES, NAD 83 (2007)

N. 167320.458

E. 552430.474

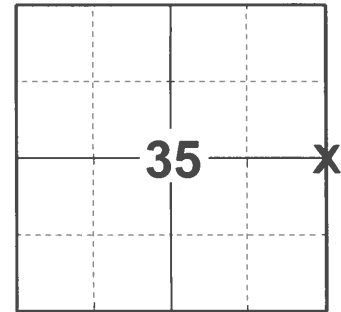
ELEVATION- DATUM

FIELD WORK DATE: 11/25/2020

BASIS FOR MONUMENT LOCATION

1975 - PLS 1103 RAN EDM/TRANSIT TRAVERSE AROUND SECTION 36, T16N, R6E, AND SECTION 1, T15N, R6E. FOUND 1" IRON PIPE BY FRED ZIETLOW. ACCEPTED SAME AS CORNER.

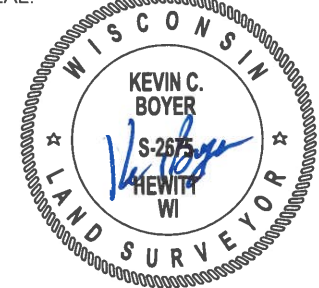
2020 - PLS 2675 FOUND HARRISON (BROKEN-TOP) FLUSH WITH THE GROUND AND DID NOT RECOVER ANY EXISTING TIES OR WITNESSES. ACCEPTED THE HARRISON (BROKEN-TOP) AS THE BEST AVAILABLE EVIDENCE OF THE CORNER LOCATION AND SET 4 NEW TIES.



LOCATION

(INDICATE CORNER BY "X")

SEAL:



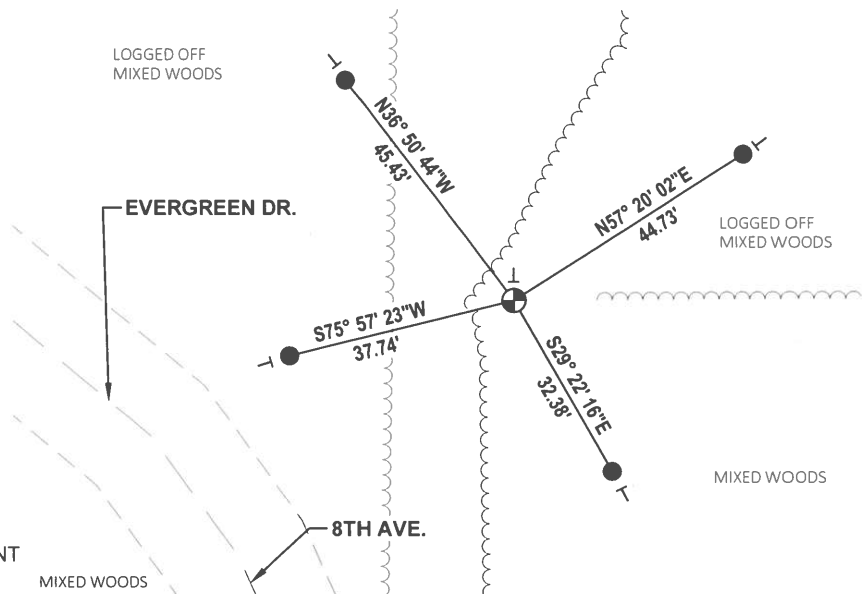
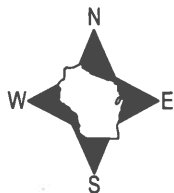
DATA SHOWN HERE ON THIS TIE SHEET IS CORRECT AND COMPLETE TO THE BEST OF MY KNOWLEDGE AND BELIEF.

PROFESSIONAL LAND SURVEYOR

DATE 12/3/2020

- TIE SKETCH -

NOTE: THE CORNER LANDS 61'± NORTH EAST OF EVERGREEN DR./8TH AVE. CENTERLINE.



- SET 3/4" x 18" IRON REBAR, 1.50#/FT
- ⊕ FOUND HARRISON (BROKEN-TOP) MONUMENT
- ┆ VINYL "T" POST

ADAMS COUNTY

Survey Monument Record

TYPE OF MONUMENT: Standard Harrison Monument

STATE PLANE COORDINATES: N _____

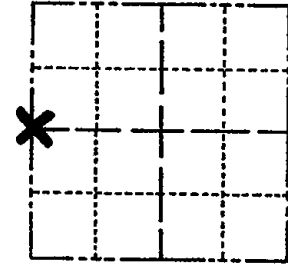
E _____

ELEVATION — M.S.L. DATUM: _____

THETA ANGLE: _____

FIELD BOOK: _____ PAGE _____

CORNER NO. 706 ⁽¹¹⁹⁾
SECTION 36
TOWN 16
RANGE 6



LOCATION
(Indicated by 'X')

SEAL:

BASIS FOR MONUMENT LOCATION

(Use reverse side if necessary)

Show info such as: History of corner, with reference to Vol. and pg, dates, surveyor; exact description of monument replaced; if location computed, by taped or EDM traverse; landowner remarks, etc.

Ran EDM/transit traverse around Section 36, Town 16N, Range 6E and Section 1, Town 15N, Range 6E.

Found 1" iron pipe by Fred Zietlow.

Accepted same as corner.

COR OK 10/20/80 KU-SK

1 GONE TOP 1/2 Harrison has been Broken

7-15-85 DK

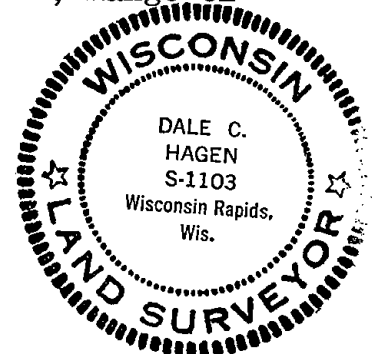
ALL OK 2-12-90 KZ-GR

ALL OK 1/31/95 CR-JG

TIES OK 2-21-00 SS

ALL OK 3-1-05-JG

1 NEW 1-14-10 SS



CERTIFIED CORRECT
Dale C Hagen
Registered Land Surveyor
DATE: 4/23/75

TIE SKETCH

(Show at least four ties)

NOTE: Ties in trees to nail in disc.

