

34  
SECTION

16  
TOWN

06  
RANGE

# ADAMS COUNTY

COUNTY CORNER NO: 128

ROMPORTOL ID: 41606340020

## PUBLIC LAND SURVEY MONUMENT RECORD

TYPE OF MONUMENT: HARRISON  
ADAMS COUNTY COORDINATES, NAD 83 (2007)

N. 164661.479

E. 544479.063

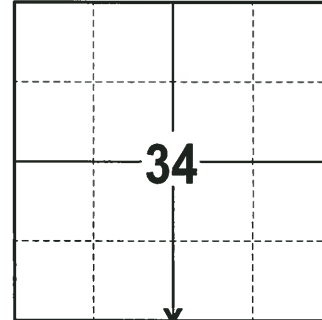
ELEVATION-      DATUM     

FIELD WORK DATE: 11/15/2017

### BASIS FOR MONUMENT LOCATION

1978 - 922 RESEARCHED ADAMS COUNTY SURVEY RECORDS AND FOUND NO RESURVEYS ON FILE WHICH PERTAINED TO THIS CORNER. NO EVIDENCE OF THE ORIGINAL CORNER OR BEARING TREES. SET THIS CORNER ON LINE BETWEEN THE SOUTHWEST CORNER OF SECTION 34 OFF OF A NORTH-SOUTH FENCE LINE. IT FIT THE INTERIOR OCCUPATION OF THE SECTION EXCELLENT (EDM-THEODOLITE TRAVERSE). SET A HARRISON MONUMENT AT THE CORNER LOCATION AND TIED OUT.

2017 - PLS 2994 FOUND A HARRISON MONUMENT 4" ABOVE THE GROUND AND 3 WITNESS TREES. THE MONUMENT AGREES WITH THE EXISTING WITNESS TREES. ACCEPTED THE HARRISON MONUMENT AS THE CORNER LOCATION. SET 4 NEW TIES AND MEASURED TO THE TIES AND WITNESS TREES.



LOCATION  
(INDICATE CORNER BY "X")

SEAL:



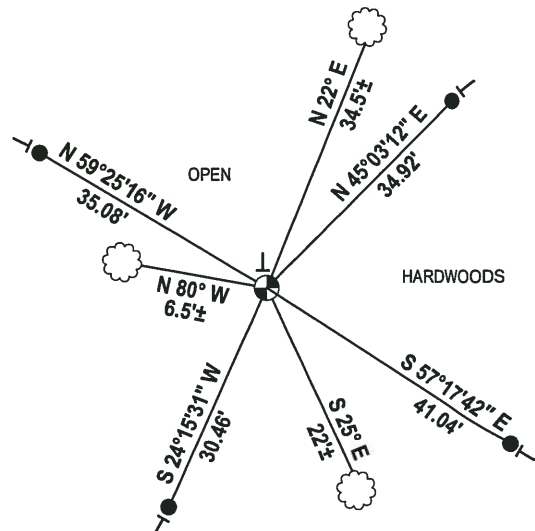
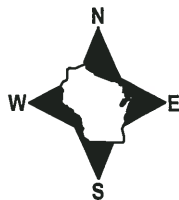
DATA SHOWN HERE ON THIS TIE SHEET IS CORRECT AND COMPLETE TO THE BEST OF MY KNOWLEDGE AND BELIEF.

PROFESSIONAL LAND SURVEYOR

DATE 12-4-17

### - TIE SKETCH

NOTE: THE CORNER FALLS 150± SOUTH OF THE FIELD EDGE.



- 3/4" x 18" IRON REBAR SET, 1.50#/FT
- ⊙ HARRISON FOUND
- ┆ VINYL "T" POST
- ☁ WITNESS TREE FOUND

# Government Land Corner Certificate

ADAMS County

TYPE OF MONUMENT: HARRISON

STATE PLANE COORDINATES: N \_\_\_\_\_  
E \_\_\_\_\_

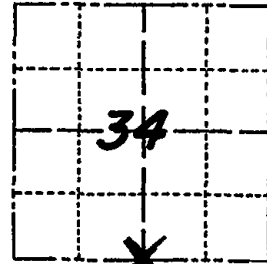
ELEVATION — M.S.L. DATUM: \_\_\_\_\_

THETA ANGLE: \_\_\_\_\_

FIELD BOOK: 567 PAGE 24

DRAWN BY: N. SQUIRES

CORNER NO. 128  
SECTION 34  
TOWN 16 N  
RANGE 6 E



LOCATION  
(Indicated by 'X')

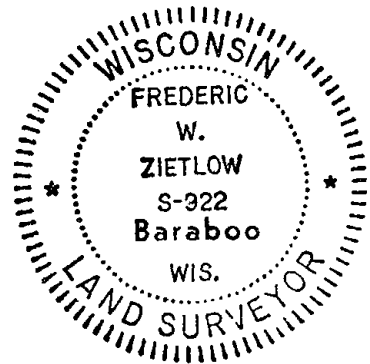
## BASIS FOR MONUMENT LOCATION

Show info such as: History of corner, with reference to Vol. and pg., dates, surveyor; exact description of monument replaced; if location computed, by taped or EDM traverse; landowner remarks, etc. (Use reverse side if necessary)

RESEARCHED ADAMS COUNTY SURVEY RECORDS AND FOUND NO RESURVEYS ON FILE WHICH PERTAINED TO THIS CORNER. NO EVIDENCE OF ORIGINAL CORNER OR B.T.'S. SET THIS CORNER ON LINE BETWEEN THE SOUTHWEST CORNER OF SECTION 34 AND THE SOUTH 1/4 CORNER OF SECTION 35 OFF A NORTH-SOUTH FENCE LINE. FIT INTERIOR OCCUPATION OF SECTION EXCELLENT. EDM-THEODOLITE TRAVERSE

OK  
A.B.K.  
10/1979

SEAL:



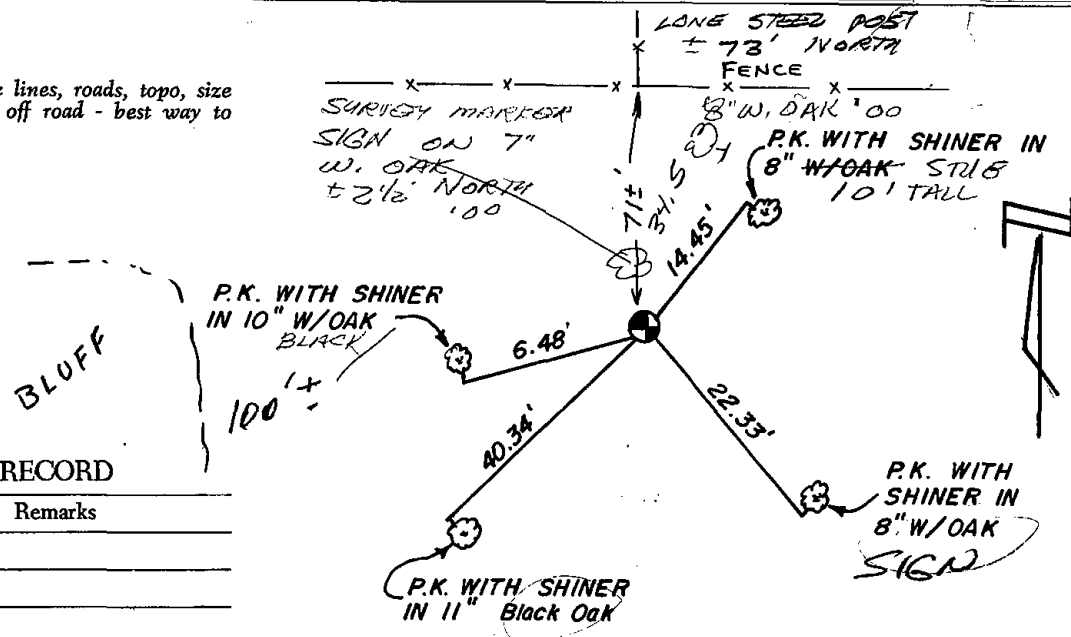
DATA SHOWN HERE ON CERTIFIED CORRECT:

*Freddie W. Zietlow*  
Registered Land Surveyor

DATE: 8-16-78

## TIE SKETCH

Show at least four ties, also fence lines, roads, topo, size and type of witness trees and if off road - best way to arrive at corner.



## MAINTENANCE RECORD

Date	Init.	Remarks
11-4-85	GR	OK
2-7-90	GR	OK
2-8-95	SG	OK
2-17-00	SS	NEW
1-14-10	SS	OK

