

35
SECTION

16
TOWN

06
RANGE

ADAMS COUNTY

COUNTY CORNER NO: 130

ROMPORTOL ID: 41606350020

PUBLIC LAND SURVEY MONUMENT RECORD

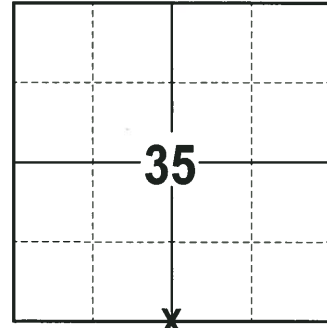
TYPE OF MONUMENT: HARRISON
ADAMS COUNTY COORDINATES, NAD 83 (2007)

N. 164687.812

E. 549834.122

ELEVATION- DATUM

FIELD WORK DATE: 11/14/2017



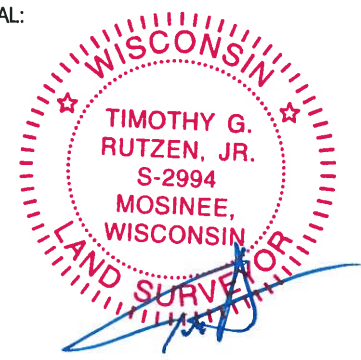
LOCATION
(INDICATE CORNER BY "X")

BASIS FOR MONUMENT LOCATION

1978 - PLS 922 FOUND REMNANT STUMP OF M.C. SMITH BEARING TREE, AS RECORDED IN ADAMS COUNTY SURVEY RECORDS. BACKED OUT TIE AND MONUMENTED SAME. CORNER FALLS 2± NORTH AND 1± WEST OF A FENCE CORNER. RE-TIED CORNER.

2017 - PLS 2994 FOUND A HARRISON MONUMENT 2" ABOVE THE SURFACE AND 3 WITNESS TREES. THE MONUMENT AGREES WITH THE EXISTING WITNESS TREES. ACCEPTED THE HARRISON MONUMENT AS THE CORNER LOCATION. SET 4 NEW TIES AND MEASURED TO THE TIES AND WITNESS TREES.

SEAL:



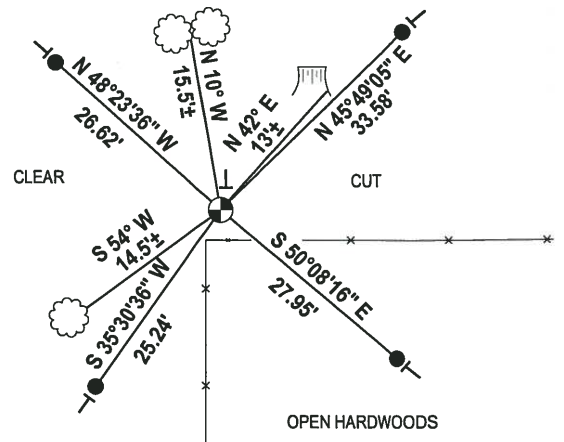
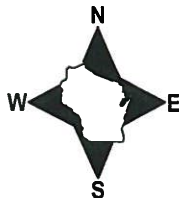
DATA SHOWN HERE ON THIS TIE SHEET IS CORRECT AND COMPLETE TO THE BEST OF MY KNOWLEDGE AND BELIEF.

PROFESSIONAL LAND SURVEYOR

DATE 12-4-17

- TIE SKETCH

NOTE: THE CORNER FALLS 4± NORTH OF THE FENCELINE.



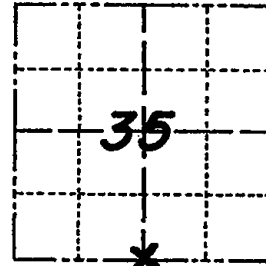
- 3/4" x 18" IRON REBAR SET, 1.50#/FT
- ⊙ HARRISON FOUND
- VINYL "T" POST
- ⌋ WITNESS TREE STUMP FOUND
- ☁ WITNESS TREE FOUND

Government Land Corner Certificate

ADAMS County

CORNER NO. 130
 SECTION 35
 TOWN 16 N
 RANGE 6 E

TYPE OF MONUMENT: _____
 STATE PLANE COORDINATES: N _____
 E _____
 ELEVATION — M.S.L. DATUM: _____
 THETA ANGLE: _____
 FIELD BOOK: 567 PAGE 25
 DRAWN BY: N. SQUIRES



LOCATION
(Indicated by 'X')

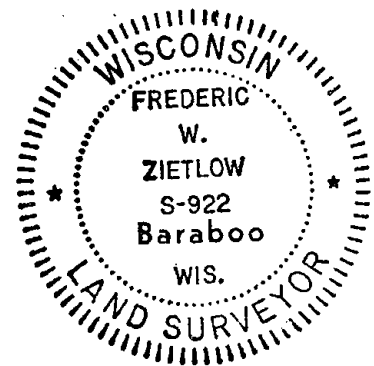
BASIS FOR MONUMENT LOCATION

Show info such as: History of corner, with reference to Vol. and pg., dates, surveyor; exact description of monument replaced; if location computed, by taped or EDM traverse; landowner remarks, etc. (Use reverse side if necessary)

FOUND REMNANT STUMP OF M.C. SMITH BEARING TREE, AS RECORDED IN ADAMS COUNTY SURVEY SURVEY RECORDS.
 BACKED OUT TIE AND MONUMENTED SAME. CORNER FALLS 2 1/2 FEET NORTH AND 1 1/2 FEET WEST OF A FENCE CORNER EDM - THEODOLITE TRAVERSE.

OK
ABK
1979

SEAL:



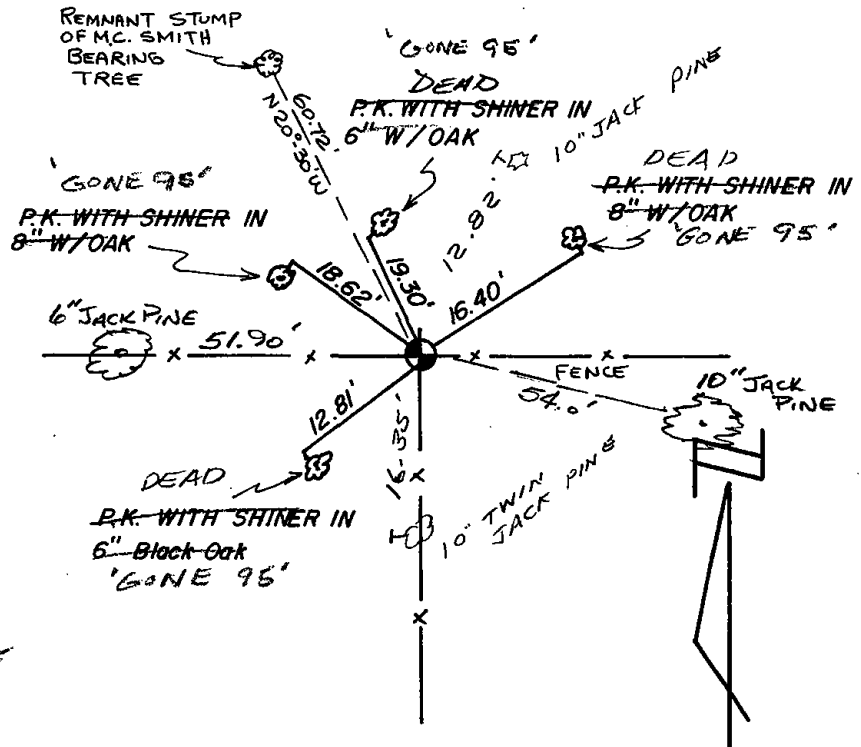
DATA SHOWN HERE ON CERTIFIED CORRECT:

Frederic W. Zietlow
 Registered Land Surveyor

DATE: 8-16-78

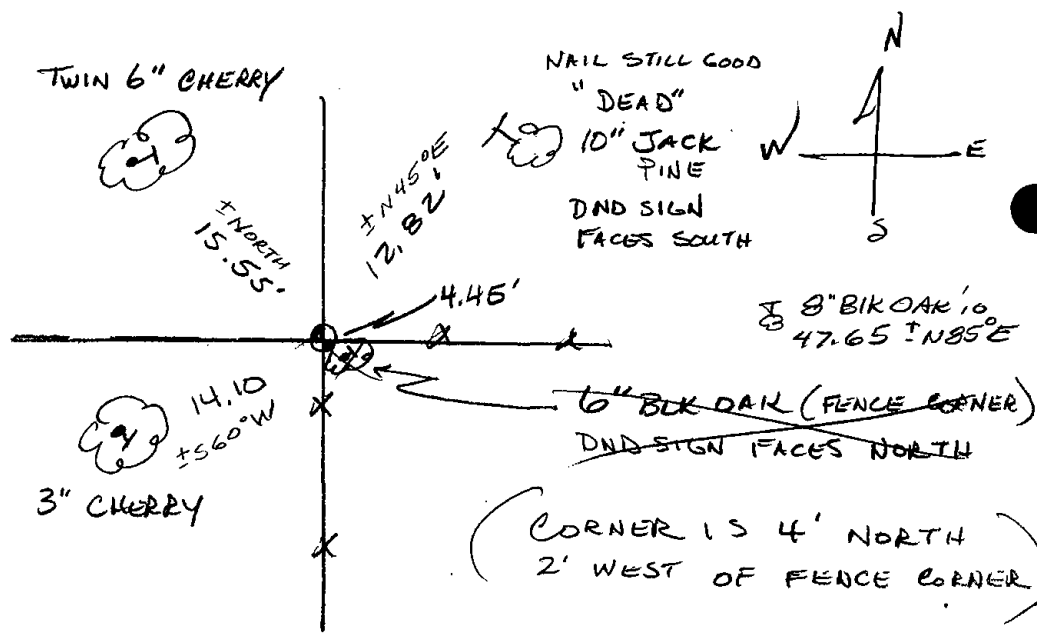
TIE SKETCH

Show at least four ties, also fence lines, roads, topo, size and type of witness trees' and if off road - best way to arrive at corner.



MAINTENANCE RECORD

Date	Init.	Remarks
11-4-85	GR	2 NEW TIES
2-12-90	K2-GR	" " "
2-8-95	JG	4-GONE 4 TIES LEFT
12-08-00	JG	SEE REVERSE SIDE
3-22-10	SS	1 NEW " "

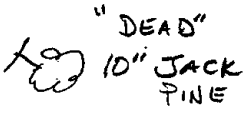


TWIN 6" CHERRY



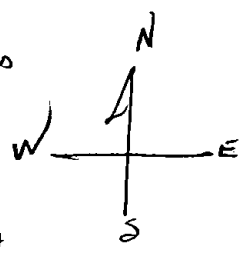
± NORTH
15.55'

NAIL STILL GOOD



"DEAD"
10" JACK
PINE

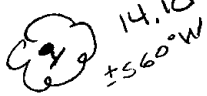
DND SIGN
FACES SOUTH



± N 45° E
12.82'

4.45'

± 8" BIRCH OAK 10
47.65 ± N 85° E



14.10
± 56° W

3" CHERRY

6" BIRCH OAK (FENCE CORNER)
DND SIGN FACES NORTH

(CORNER IS 4' NORTH
2' WEST OF FENCE CORNER)