

32 SECTION 17 TOWN 07 RANGE

ADAMS COUNTY

COUNTY CORNER NO: 124
ROMPORTOL ID: 41707320020

PUBLIC LAND SURVEY MONUMENT RECORD

TYPE OF MONUMENT: HARRISON
ADAMS COUNTY COORDINATES, NAD 83 (2007)

N. 192510.725

E. 565325.159

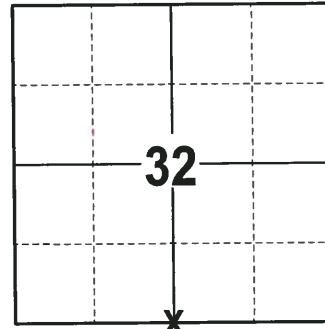
ELEVATION- DATUM

FIELD WORK DATE: 12/06/2017

BASIS FOR MONUMENT LOCATION

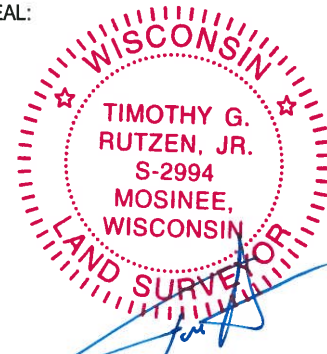
1973 - PLS 878 CORNER SET FROM OLD CEMETERY LINES AFTER LOOKING UP THE CEMETERY DESCRIPTION. SET A HARRISON MONUMENT AT THE CALCULATED LOCATION AND TIED OUT.

2017 - PLS 2994 FOUND A HARRISON MONUMENT 1" BELOW THE ROAD SURFACE AND 1 PROPERTY IRON USED AS A TIE. THE MONUMENT AGREES WITH THE EXISTING TIE. ACCEPTED THE HARRISON MONUMENT AS THE CORNER LOCATION. SET 3 NEW TIES AND MEASURED TO THE TIES.



LOCATION
(INDICATE CORNER BY "X")

SEAL:



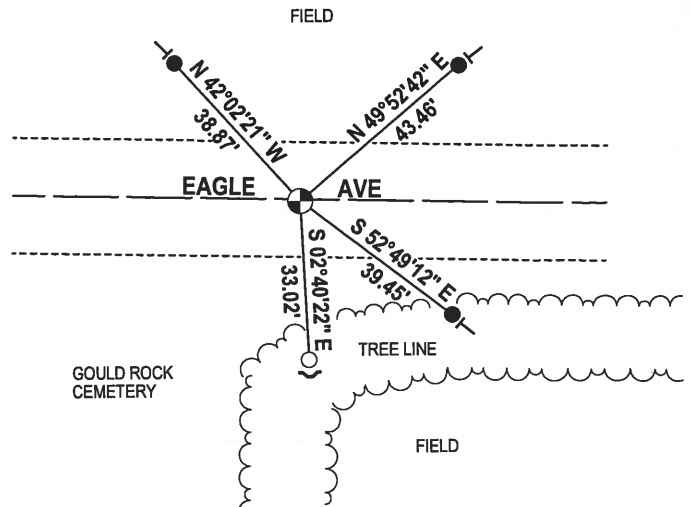
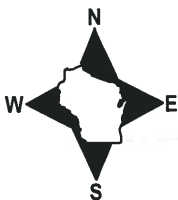
DATA SHOWN HERE ON THIS TIE SHEET IS CORRECT AND COMPLETE TO THE BEST OF MY KNOWLEDGE AND BELIEF.

PROFESSIONAL LAND SURVEYOR

DATE 12-21-17

- TIE SKETCH -

NOTE: THE CORNER FALLS 0.5± SOUTH OF THE CENTERLINE OF EAGLE AVE.



- 3/4" x 18" IRON REBAR SET, 1.50#/FT
- 3/4" IRON ROD FOUND
- ⊕ HARRISON FOUND
- ↗ STEEL FENCE POST
- ↖ VINYL "T" POST

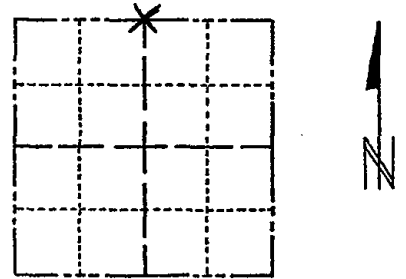
ADAMS COUNTY

Survey Monument Record

TYPE OF MONUMENT: 30" HARRISON
 STATE PLANE COORDINATES: N _____
 E _____
 ELEVATION — M.S.L. DATUM: _____
 THETA ANGLE: _____
 FIELD BOOK: 108 PAGE 137

CORNER NO. 338
 SECTION 5
 TOWN 16
 RANGE 7

4



LOCATION
(Indicated by 'X')

SEAL:



BASIS FOR MONUMENT LOCATION

(Use reverse side if necessary)

Show info such as: History of corner, with reference to Vol. and pg, dates, surveyor; exact description of monument replaced; if location computed, by taped or EDM traverse; landowner remarks, etc.

Corner set from old cemetery lines after looking up cemetery description.

CORNER	O.K.	2-22-77	GR-SS
"	"	3-22-82	GR-SS
"	"	11-26-86	CR
"	"	12-25-91	CR
2 NEW TIES		12-10-96	SS
OK		12-28-01	ML
OK		1-24-07	JC
OK		01-17-12	MIS

CERTIFIED CORRECT:

Anthony B. Kiedrowski
 Registered Land Surveyor

DATE: 9/5/73

TIE SKETCH

(Show at least four ties)

