

32
SECTION

17
TOWN

07
RANGE

ADAMS COUNTY

COUNTY CORNER NO: 125

ROMPORTOL ID: 41707320000

PUBLIC LAND SURVEY MONUMENT RECORD

TYPE OF MONUMENT: HARRISON (BROKEN-TOP)
ADAMS COUNTY COORDINATES, NAD 83 (2007)

N. 192514.200

E. 567968.669

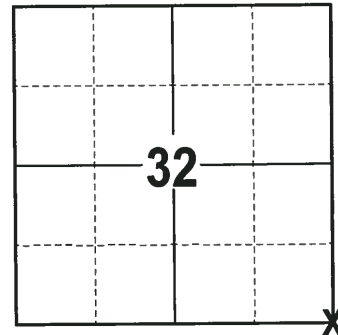
ELEVATION- DATUM

FIELD WORK DATE: 12/06/2017

BASIS FOR MONUMENT LOCATION

1973 - PLS 878 SET BY ANALYZING A TRAVERSE OF THE ENTIRE SECTION. SET A HARRISON MONUMENT AT THE CALCULATED LOCATION AND TIED OUT.

2017 - PLS 2994 FOUND A HARRISON MONUMENT WITH A BROKEN-TOP 18" BELOW THE ROAD SURFACE, 1 WITNESS AND 1 PROPERTY IRON USED AS A TIE. THE MONUMENT AGREES WITH THE EXISTING WITNESS AND PROPERTY IRON. ACCEPTED THE HARRISON MONUMENT AS THE CORNER LOCATION. SET 3 NEW TIES AND MEASURED TO THE TIES AND WITNESS.



LOCATION
(INDICATE CORNER BY "X")

SEAL:



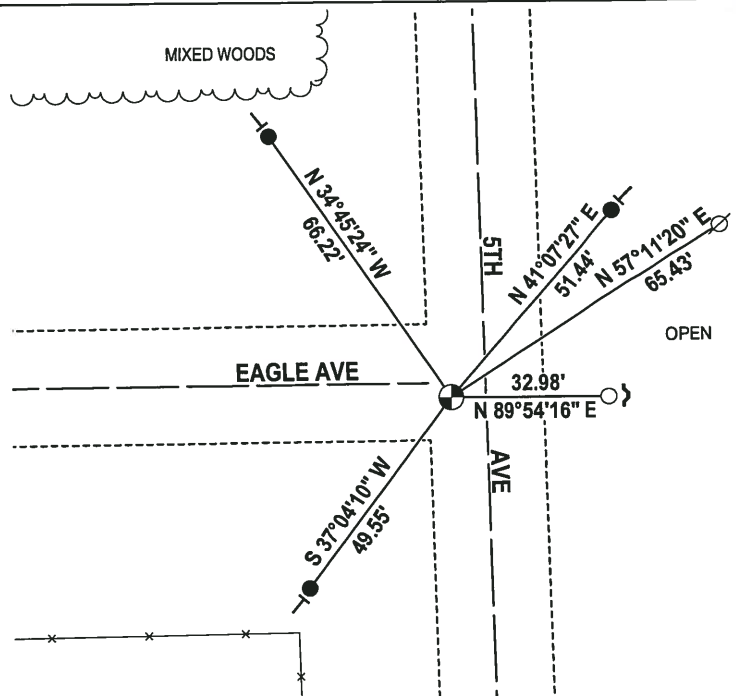
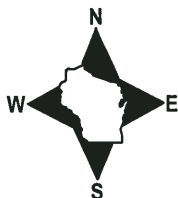
DATA SHOWN HERE ON THIS TIE SHEET IS CORRECT AND COMPLETE TO THE BEST OF MY KNOWLEDGE AND BELIEF.

PROFESSIONAL LAND SURVEYOR

DATE 12-21-17

- TIE SKETCH -

NOTE: THE CORNER FALLS 3± SOUTH OF THE CENTERLINE OF EAGLE AVE AND 7± WEST OF THE CENTERLINE OF 5TH AVE.



- 3/4" x 18" IRON REBAR SET, 1.50#/FT
- 3/4" IRON ROD FOUND
- ⊕ HARRISON (BROKEN-TOP) FOUND
- ⊗ WITNESS POWER POLE FOUND
- ~ STEEL FENCE POST
- VINYL "T" POST

ADAMS COUNTY

Survey Monument Record

TYPE OF MONUMENT: Harrison standard

STATE PLANE COORDINATES: N _____

E _____

ELEVATION — M.S.L. DATUM: _____

THETA ANGLE: _____

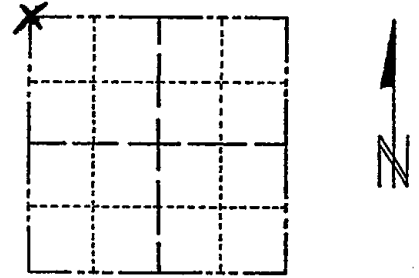
FIELD BOOK: 107 PAGE 40

CORNER NO. 225 5

SECTION 4

TOWN 16

RANGE 7



LOCATION
(Indicated by 'X')

SEAL:

BASIS FOR MONUMENT LOCATION

(Use reverse side if necessary)

Show info such as: History of corner, with reference to Vol. and pg, dates, surveyor; exact description of monument replaced; if location computed, by taped or EDM traverse; landowner remarks, etc.

Set by analyzing traverse of entire section.



CORNER	O.K.	DATE	REMARKS
		2-22-77	GR-SS
"	"	3-22-82	"
"	"	11-26-86	GR
"	"	11-25-91	GR-KR
"	"	12-10-96	SR

OK 12-28-01 ML

OK 1-24-07 - JG

OK 01-17-12 MS

CERTIFIED CORRECT:

Anthony B. Kiedrowski
Registered Land Surveyor

DATE: 2-22-73

TIE SKETCH

(Show at least four ties)

