

PUBLIC LAND SURVEY MONUMENT RECORD

TYPE OF MONUMENT: HARRISON
 ADAMS COUNTY COORDINATES, NAD 83 (2007)

N. 192525.822

E. 573262.779

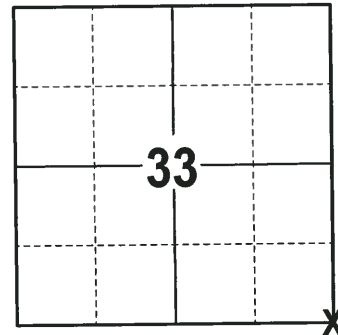
ELEVATION- DATUM

FIELD WORK DATE: 12/06/2017

BASIS FOR MONUMENT LOCATION

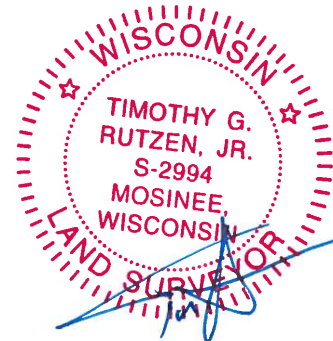
1974 - PLS 1103 PREVIOUSLY SET HARRISON MONUMENT WAS DESTROYED DURING CONSTRUCTION OF 4TH AVENUE ALONG WITH ALL OF THE BEARING OBJECTS. RE-ESTABLISHED THE LOCATION OF THE CORNER BY SINGLE PROPORTIONATE MEASUREMENT ALONG THE TOWNSHIP LINE. SET A HARRISON MONUMENT AT THE CALCULATED LOCATION AND TIED OUT.

2017 - PLS 2994 FOUND A HARRISON MONUMENT 6" BELOW THE ROAD SURFACE AND 1 TIE. THE MONUMENT AGREES WITH THE EXISTING TIE. ACCEPTED THE HARRISON MONUMENT AS THE CORNER LOCATION. SET 3 NEW TIES AND MEASURED TO THE TIES.



LOCATION
(INDICATE CORNER BY "X")

SEAL:



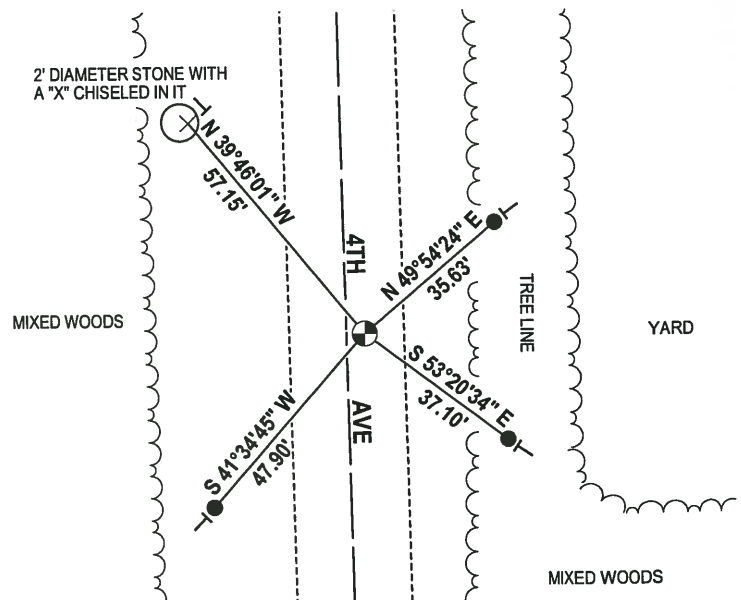
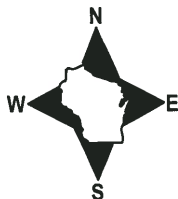
DATA SHOWN HERE ON THIS TIE SHEET IS CORRECT AND COMPLETE TO THE BEST OF MY KNOWLEDGE AND BELIEF.

PROFESSIONAL LAND SURVEYOR

DATE 12-21-17

- TIE SKETCH

NOTE: THE CORNER FALLS 4± EAST OF THE CENTERLINE OF 4TH AVE.



- 3/4" x 18" IRON REBAR SET, 1.50#/FT
- ⊗ HARRISON FOUND
- VINYL "T" POST

ADAMS COUNTY

Survey Monument Record

TYPE OF MONUMENT: Standard Harrison

STATE PLANE COORDINATES: N _____

E _____

ELEVATION — M.S.L. DATUM: _____

THETA ANGLE: _____

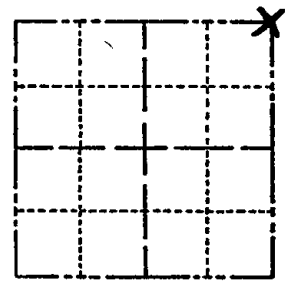
FIELD BOOK: _____ PAGE _____

CORNER NO. 224 ⁷

SECTION 4

TOWN 16

RANGE 7



LOCATION
(Indicated by 'X')

SEAL:

BASIS FOR MONUMENT LOCATION

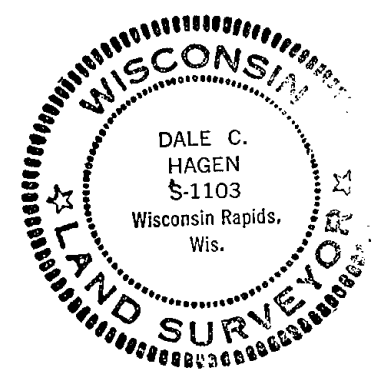
(Use reverse side if necessary)

Show info such as: History of corner, with reference to Vol. and pg, dates, surveyor; exact description of monument replaced; if location computed, by taped or EDM traverse; landowner remarks, etc.

Previously set Harrison Monument was destroyed during construction of 4th Avenue along with all bearing objects.

Re-established location of corner by single proportionate measure along the township line.

- COR OK 4-12-82 GR-SS
- OK 11-26-86 ER
- OK 1-2-92 GR-JG
- OK 12-27-96 JG
- SEE ATTACHED SHEET SH & BF, 5-26-99
- OK 12-28-01 ML
- OK, 1-24-07 - JG
- OK 01-09-12 MS



CERTIFIED CORRECT:

Dale C. Hagen
Registered Land Surveyor

DATE: October 2, 1974

TIE SKETCH

(Show at least four ties)

NOTE

Ties in trees to nail in disc.

