

34  
SECTION

17  
TOWN

07  
RANGE

# ADAMS COUNTY

COUNTY CORNER NO: 129

ROMPORTOL ID: 41707340000

## PUBLIC LAND SURVEY MONUMENT RECORD

TYPE OF MONUMENT: HARRISON  
ADAMS COUNTY COORDINATES, NAD 83 (2007)

N. 192516.405

E. 578556.977

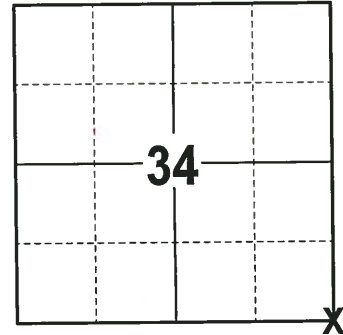
ELEVATION-      DATUM     

FIELD WORK DATE: 12/06/2017

### BASIS FOR MONUMENT LOCATION

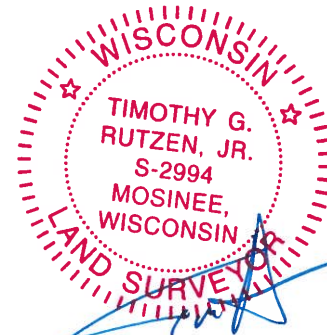
1974 - PLS 1103 RAN E.D.M./TRANSIT TRAVERSE OF SECTIONS 2, 3 AND 4 OF THE TOWN OF NEW CHESTER AND SECTIONS 34 AND 35 OF THE TOWN OF LINCOLN. FOUND NO EVIDENCE OF THE ORIGINAL CORNER OR ANY OF ITS ACCESSORY MONUMENTS. ESTABLISHED THE CORNER BY SINGLE PROPORTIONATE MEASUREMENT ALONG THE TOWNSHIP LINE. SET A HARRISON MONUMENT AT THE CALCULATED LOCATION AND TIED OUT.

2017 - PLS 2994 FOUND A HARRISON MONUMENT 6" BELOW THE ROAD SURFACE AND 2 TIES. THE MONUMENT AGREES WITH THE EXISTING TIES. ACCEPTED THE HARRISON MONUMENT AS THE CORNER LOCATION. SET 4 NEW TIES AND MEASURED TO THE TIES.



LOCATION  
(INDICATE CORNER BY "X")

SEAL:



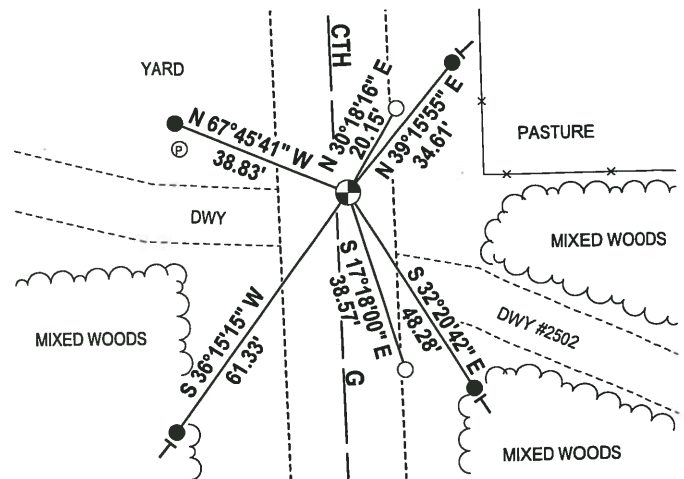
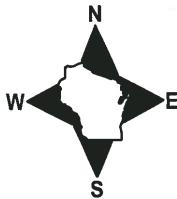
DATA SHOWN HERE ON THIS TIE SHEET IS CORRECT AND COMPLETE TO THE BEST OF MY KNOWLEDGE AND BELIEF.

PROFESSIONAL LAND SURVEYOR

DATE 12-21-17

### - TIE SKETCH -

NOTE: THE CORNER FALLS 3± EAST OF THE CENTERLINE OF CTH G.



- 3/4" x 18" IRON REBAR SET, 1.50#/FT
- 3/4" IRON ROD FOUND
- ⊕ HARRISON FOUND
- Ⓟ FIBER OPTIC WARNING POST
- ⊖ VINYL "T" POST

ADAMS COUNTY

Survey Monument Record

TYPE OF MONUMENT: Standard Harrison

STATE PLANE COORDINATES: N \_\_\_\_\_

E \_\_\_\_\_

ELEVATION — M.S.L. DATUM: \_\_\_\_\_

THETA ANGLE: \_\_\_\_\_

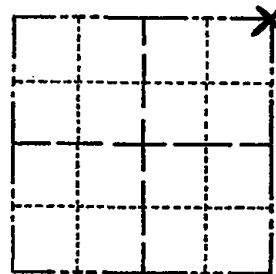
FIELD BOOK: \_\_\_\_\_ PAGE \_\_\_\_\_

CORNER NO. 592 <sup>9</sup>

SECTION 3

TOWN 16

RANGE 7



LOCATION  
(Indicated by 'X')

SEAL:

BASIS FOR MONUMENT LOCATION

(Use reverse side if necessary)

Show info such as: History of corner, with reference to Vol. and pg, dates, surveyor; exact description of monument replaced; if location computed, by taped or EDM traverse; landowner remarks, etc.

Ran EDM/transit traverse of Sections 2, 3 and 4 of the Town of New Chester and Sections 34 and 35 of the Town of Lincoln.

Could find no evidence of the original corner or any of its accessory monuments. Established corner by single proportionate measure along the township line.



COR OK 4-12-82 GR-SS

1-GONE, NOTHING AVAILABLE 12-30-91 GR-JG

" " " 12-10-96 SS

SEE ATTACHED SHEET SHY-BF 5-26-99

CORNER OK 3-4-02-GR

OK, 2-20-01-JG OK 01-09-12 MS

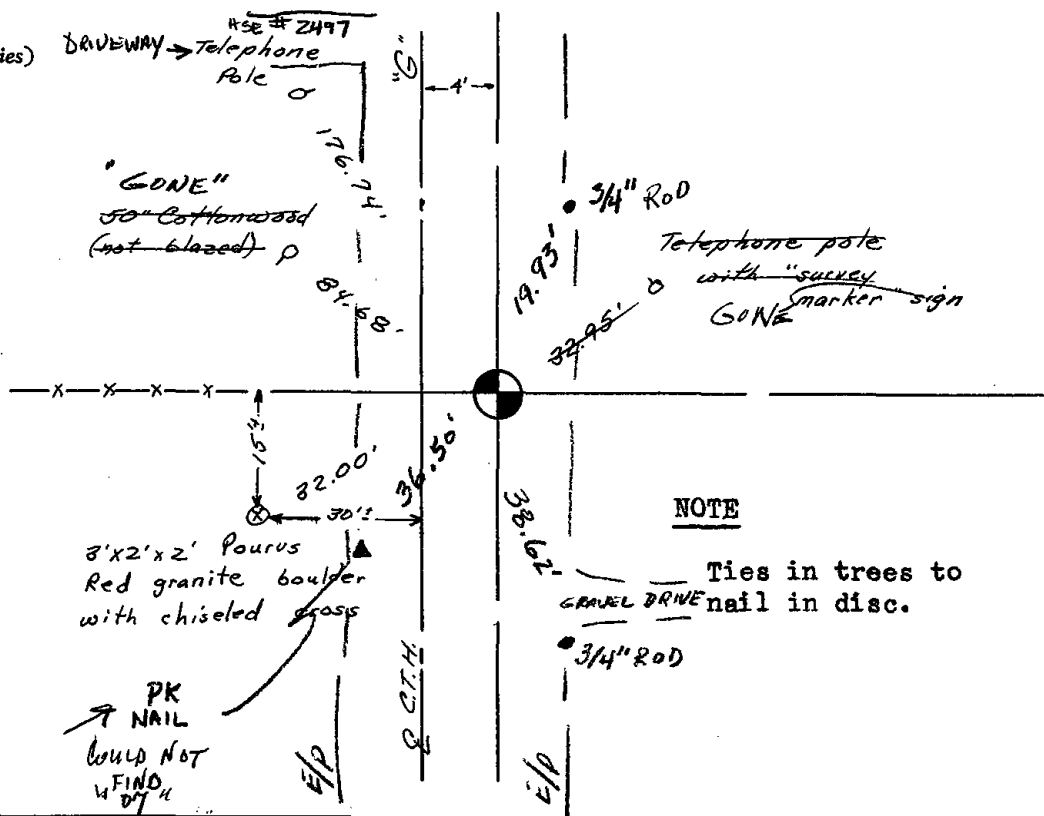
CERTIFIED CORRECT:

*Dale C. Hagen*  
Registered Land Surveyor

DATE: October 2, 1974

TIE SKETCH

(Show at least four ties)



NOTE

Ties in trees to  
GRAVEL DRIVE nail in disc.

**ADAMS COUNTY**

**Survey Monument Record**

TYPE OF MONUMENT: Standard Harrison

STATE PLANE COORDINATES: N \_\_\_\_\_  
E \_\_\_\_\_

ELEVATION — M.S.L. DATUM: \_\_\_\_\_

THETA ANGLE: \_\_\_\_\_

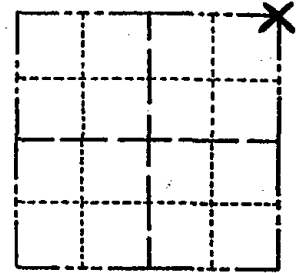
FIELD BOOK: \_\_\_\_\_ PAGE \_\_\_\_\_

CORNER NO. 592

SECTION 3

TOWN 16

RANGE 7



LOCATION  
(Indicated by 'X')

SEAL:

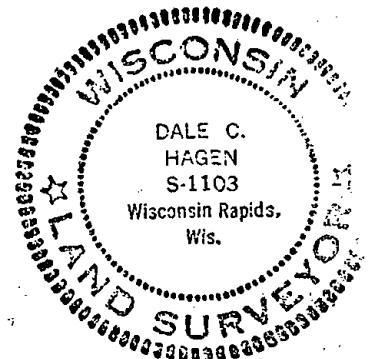
**BASIS FOR MONUMENT LOCATION**

(Use reverse side if necessary)

Show info such as: History of corner, with reference to Vol. and pg, dates, surveyor; exact description of monument replaced; if location computed, by taped or EDM traverse; landowner remarks, etc.

Ran EDM/transit traverse of Sections 2, 3 and 4 of the Town of New Chester and Sections 34 and 35 of the Town of Lincoln.

Could find no evidence of the original corner or any of its accessory monuments. Established corner by single proportionate measure along the township line.



COR OR 4-12-82 GR-SS

1-GONE, NOTHING AVAILABLE 12-30-91 GR-JG  
~~5-13-97 NEW TIE SH & TN~~  
 5-26-99 NEW TIES SH & BF

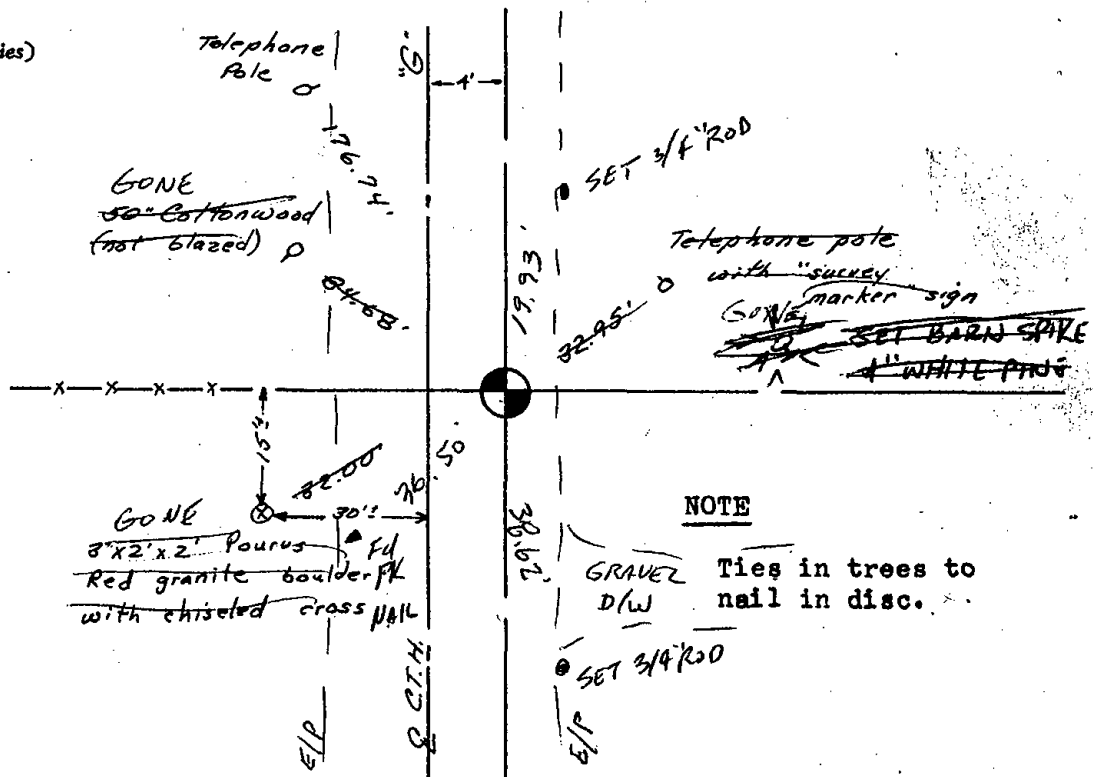
CERTIFIED CORRECT:

*Dale C. Hagen*  
Registered Land Surveyor

DATE: October 2, 1974

**TIE SKETCH**

(Show at least four ties)



**NOTE**  
GRAVEL D/W Ties in trees to nail in disc.