

35 SECTION 17 TOWN 07 RANGE

ADAMS COUNTY

COUNTY CORNER NO: 130

ROMPORTOL ID: 41707350020

PUBLIC LAND SURVEY MONUMENT RECORD

TYPE OF MONUMENT: HARRISON
 ADAMS COUNTY COORDINATES, NAD 83 (2007)

N. 192562.259

E. 581204.220

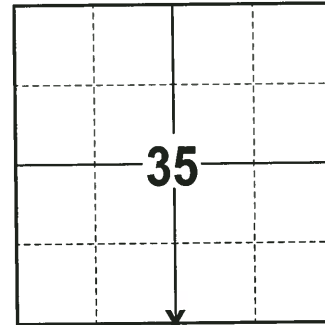
ELEVATION- DATUM

FIELD WORK DATE: 12/11/2017

BASIS FOR MONUMENT LOCATION

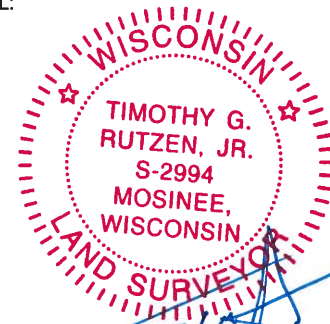
1974 - PLS 1103 RAN E.D.M./TRANSIT TRAVERSE OF SECTION 2 AND ADJACENT SECTIONS. FOUND NO EVIDENCE OF THE ORIGINAL CORNER OR ANY REMONUMENTATION WITHIN THE SEARCH AREA. SET THE CORNER EQUIDISTANT AND ON A LINE BETWEEN THE NORTHEAST AND THE NORTHWEST CORNERS OF SECTION 2. SET A HARRISON MONUMENT AT THE COMPUTED LOCATION AND TIED OUT.

2017 - PLS 2994 FOUND A HARRISON MONUMENT 4" ABOVE THE GROUND SURFACE. ALL OF THE WITNESSES HAVE BEEN DESTROYED. ACCEPTED THE HARRISON MONUMENT AS THE BEST EVIDENCE OF THE CORNER LOCATION. SET 4 NEW TIES AND MEASURED TO THE TIES.



LOCATION
(INDICATE CORNER BY "X")

SEAL:



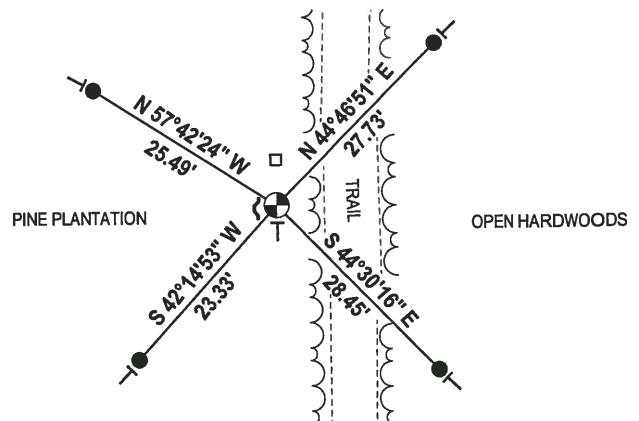
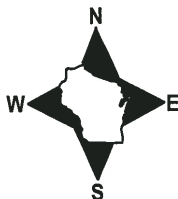
DATA SHOWN HERE ON THIS TIE SHEET IS CORRECT AND COMPLETE TO THE BEST OF MY KNOWLEDGE AND BELIEF.

PROFESSIONAL LAND SURVEYOR

DATE 12-21-17

- TIE SKETCH -

NOTE: THE CORNER FALLS 6± SOUTH OF A 4"X4" POST W/DND SIGN and 16± WEST OF THE CENTERLINE OF THE TRAIL.



- 3/4" x 18" IRON REBAR SET, 1.50#/FT
- ⊕ HARRISON FOUND
- 4"X4" POST W/DND SIGN FOUND
- ~ STEEL FENCE POST
- VINYL "T" POST

ADAMS COUNTY

Survey Monument Record

TYPE OF MONUMENT: Standard Harrison

STATE PLANE COORDINATES: N _____

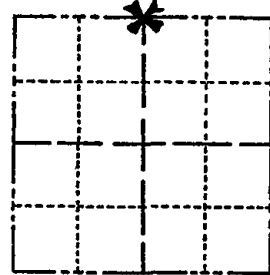
E _____

ELEVATION — M.S.L. DATUM: _____

THETA ANGLE: _____

FIELD BOOK: _____ PAGE _____

CORNER NO. 587¹⁰
 SECTION 2
 TOWN 16
 RANGE 7



LOCATION
(Indicated by 'X')

SEAL:



BASIS FOR MONUMENT LOCATION

(Use reverse side if necessary)

Show info such as: History of corner, with reference to Vol. and pg, dates, surveyor; exact description of monument replaced; if location computed, by taped or EDM traverse; landowner remarks, etc.

Ran EDM/transit traverse of Section 2 and adjacent sections. Could find no evidence of the original corner or any remonumentation within the search area.

Set corner equidistant and on line between Northeast and Northwest corners of Section 2.

CORNER	O.K.	2-24-77	GR-SS
"	"	4-12-82	"
"	"	12-12-86	GR
"	"	12-30-91	GR-36
"	"	12-10-96	SS
"	"	3-4-02	GR

CERTIFIED CORRECT:
Dale C. Hagen
 Registered Land Surveyor
 DATE: October 2, 1974

TIE SKETCH

OK, 2-20-07-36

OK 01-17-12 MS

(Show at least four ties)

NOTE: Ties in trees to nail in disc

