

## PUBLIC LAND SURVEY MONUMENT RECORD

TYPE OF MONUMENT: HARRISON  
 ADAMS COUNTY COORDINATES, NAD 83 (2007)

N. 191132.469

E. 560083.488

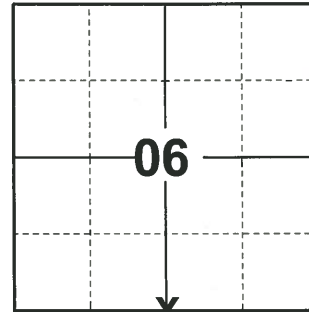
ELEVATION- \_\_\_\_\_ DATUM \_\_\_\_\_

FIELD WORK DATE: 08/31/2020

### BASIS FOR MONUMENT LOCATION

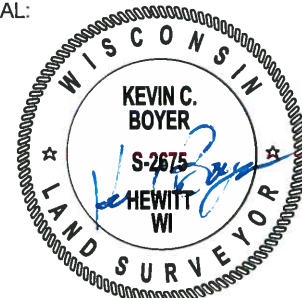
1977 - PLS 878 EXCAVATED WITH BACKHOE. FOUND NOTHING. CORNER RESET BY WORKING BACK FROM OLD PLATS OF RECORD IN GRAND MARSH. CORNER WAS SET PRIOR TO MAY 74, BUT RECORDS WERE LOST IN A FIRE. RETIED 4/4/77.

2020 - PLS 2675 FOUND HARRISON 8"± BELOW THE ROAD SURFACE, 1 TIE, AND 1 WITNESS. THE MONUMENT AGREES WITH THE TIE AND WITNESS. ACCEPTED THE HARRISON AS THE CORNER LOCATION. SET 3 NEW TIES AND MEASURED TO THE EXISTING TIE AND WITNESS.



**LOCATION**  
 (INDICATE CORNER BY "X")

SEAL:



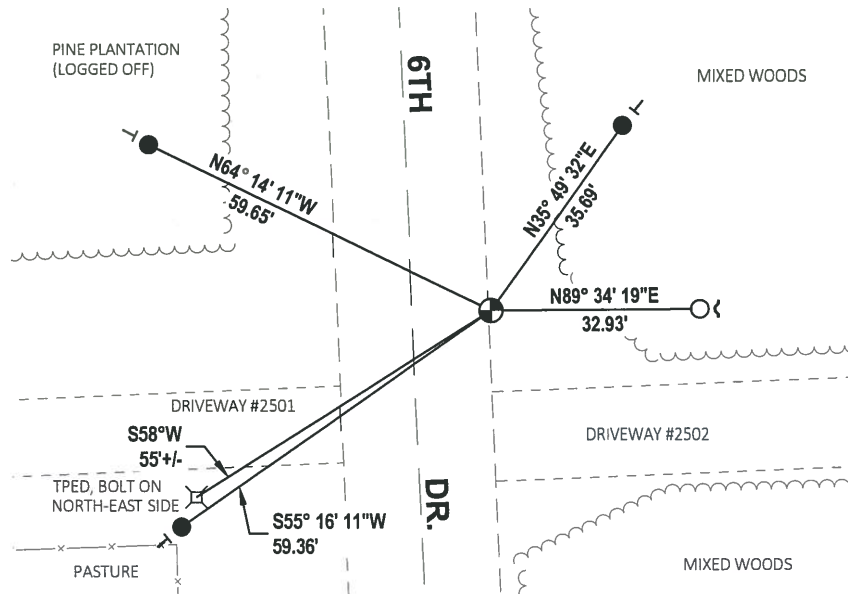
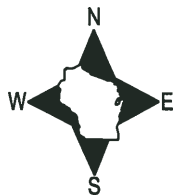
DATA SHOWN HERE ON THIS TIE SHEET IS CORRECT AND COMPLETE TO THE BEST OF MY KNOWLEDGE AND BELIEF.

PROFESSIONAL LAND SURVEYOR

DATE 11/3/2020

### - TIE SKETCH

NOTE: THE CORNER LANDS 12'± EAST OF 6TH DR. CENTERLINE.



- SET 3/4" x 18" IRON REBAR, 1.50#/FT
- FOUND 3/4" IRON ROD
- ⊕ FOUND HARRISON MONUMENT
- ✓ STEEL FENCE POST
- └ VINYL "T" POST

# ADAMS COUNTY

## Survey Monument Record

TYPE OF MONUMENT: Harrison

STATE PLANE COORDINATES: N \_\_\_\_\_

E \_\_\_\_\_

ELEVATION — M.S.L. DATUM: \_\_\_\_\_

THETA ANGLE: \_\_\_\_\_

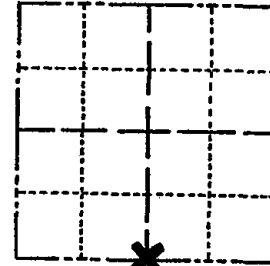
FIELD BOOK: 38 PAGE 36

CORNER NO. 22

SECTION 6

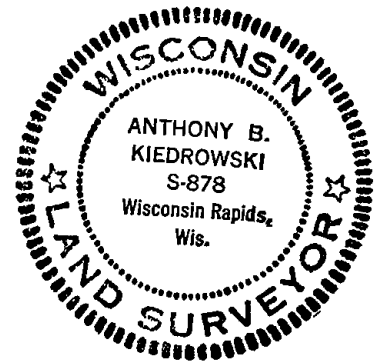
TOWN 16

RANGE 7



LOCATION  
(Indicated by 'X')

SEAL:



### BASIS FOR MONUMENT LOCATION

(Use reverse side if necessary)

Show info such as: History of corner, with reference to Vol. and pg, dates, surveyor; exact description of monument replaced; if location computed, by taped or EDM traverse; landowner remarks, etc.

Excavated with backhoe. Found nothing.  
 Corner reset by working back from old plats of record in Grand Marsh.  
 Corner was set prior to May, 74, but records were lost in a fire. Retied 4/4/77

COR. OK 4-12-82 GR-55  
 " " 11-26-86 CL  
 1 GONE - 1 NEW 12-26-91 KZ-GR  
 OK 12-10-96 SS  
 OK 12-14-01 ML  
 1-NEW TIE, 1-24-07-JG  
 " 01-30-12 ML

CERTIFIED CORRECT:

*Anthony B. Kiedrowski*  
 Registered Land Surveyor  
 DATE: 7/5/77

### TIE SKETCH

(Show at least four ties)

