

## PUBLIC LAND SURVEY MONUMENT RECORD

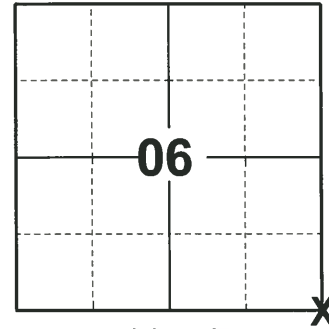
TYPE OF MONUMENT: HARRISON (BROKEN-TOP)  
 ADAMS COUNTY COORDINATES, NAD 83 (2007)

N. 191164.880

E. 562734.950

ELEVATION- \_\_\_\_\_ DATUM \_\_\_\_\_

FIELD WORK DATE: 08/31/2020



**LOCATION**  
 (INDICATE CORNER BY "X")

### BASIS FOR MONUMENT LOCATION

1977 - PLS 878 EXCAVATED WITH BACKHOE. FOUND NOTHING. POINT ESTABLISHED BY WORKING BACK FROM OLD PLATS IN GRAND MARSH. WAS ABLE TO SET THE FORTY CORNER IN THE SOUTHEAST QUADRANT OF THE TOWN ROAD AND "E". THIS MATCHED STONES FOUND IN THE OLD PLATS AND HELPED IN LOCATING THIS CORNER. CORNER WAS SET PRIOR TO MAY OF 1974, BUT RECORDS WERE LOST IN A FIRE. RETIED 7/7/76.

2020 - PLS 2675 FOUND MAG NAIL IN THE ROAD SURFACE, REMOVED AND FOUND HARRISON 8"± BELOW THE ROAD SURFACE, 1 TIE, AND 2 WITNESSES. THE MONUMENT AGREES WITH THE TIE AND WITNESSES. ACCEPTED THE HARRISON AS THE CORNER LOCATION. SET 4 NEW TIES AND MEASURED TO THE EXISTING TIE AND WITNESSES.

SEAL:



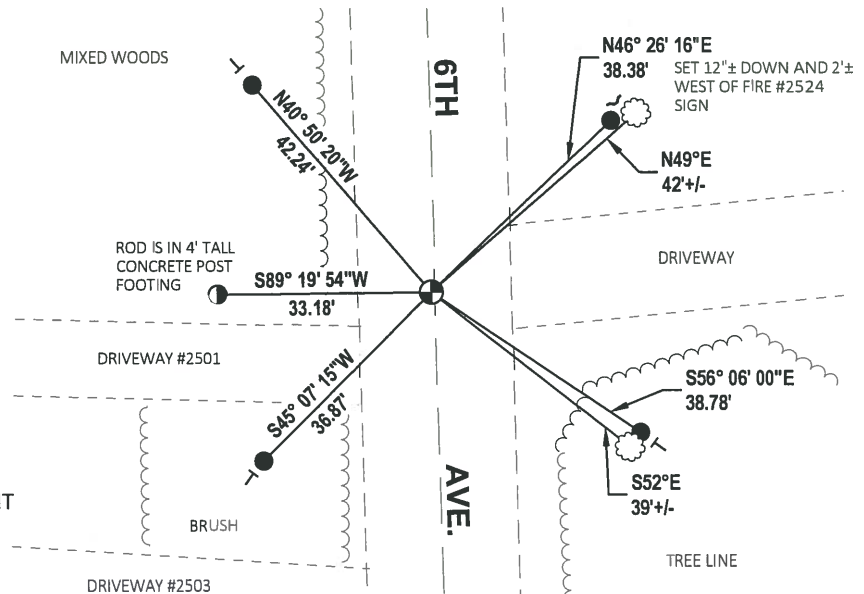
DATA SHOWN HERE ON THIS TIE SHEET IS CORRECT AND COMPLETE TO THE BEST OF MY KNOWLEDGE AND BELIEF.

PROFESSIONAL LAND SURVEYOR

DATE 11/3/2020

### - TIE SKETCH

NOTE: THE CORNER LANDS .6± WEST OF 6TH AVE. CENTERLINE.



- SET 3/4" x 18" IRON REBAR, 1.50#/FT
- ⊙ FOUND 1/2" IRON ROD
- ⊕ FOUND HARRISON (BROKEN-TOP) MONUMENT
- ~ STEEL FENCE POST
- └ VINYL "T" POST
- ☁ WITNESS TREE

# ADAMS COUNTY

## Survey Monument Record

TYPE OF MONUMENT: Harrison

STATE PLANE COORDINATES: N \_\_\_\_\_

E \_\_\_\_\_

ELEVATION — M.S.L. DATUM: \_\_\_\_\_

THETA ANGLE: \_\_\_\_\_

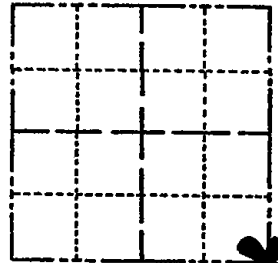
FIELD BOOK: 37 PAGE 52

CORNER NO. 23

SECTION 6

TOWN 16

RANGE 7



LOCATION  
(Indicated by 'X')

SEAL:



### BASIS FOR MONUMENT LOCATION

(Use reverse side if necessary)

Show info such as: History of corner, with reference to Vol. and pg. dates, surveyor; exact description of monument replaced; if location computed, by taped or EDM traverse; landowner remarks, etc.

Excavated with backhoe. Found nothing. Point established by working back from old plats in Grand Marsh. I was able to set the forty corner south of here from an existing bearing tree in the southeast quadrant of the town road and " E ". This matched stones found in the old plats and helped in locating this corner.

This corner was set prior to May of 1974, but the records were lost in a fire. Retied 7/7/76

|          |          |       |
|----------|----------|-------|
| Cor. OK  | 3-22-82  | GR-SS |
| " "      | 11-26-86 | GR    |
| 1 Gone " | 12-26-91 | K2-GR |
| OK       | 12-10-96 | SS    |

CERTIFIED CORRECT:

*Anthony B. Kiedrowski*  
Registered Land Surveyor

DATE: 7/5/77

### TIE SKETCH

(Show at least four ties)

