

PUBLIC LAND SURVEY MONUMENT RECORD

TYPE OF MONUMENT: SURVEY NAIL
 ADAMS COUNTY COORDINATES, NAD 83 (2007)

N. 191160.726

E. 568024.694

ELEVATION- - - - - DATUM - - - - -

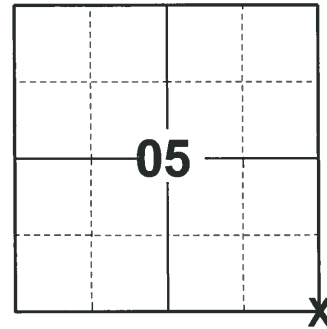
FIELD WORK DATE: 08/31/2020

BASIS FOR MONUMENT LOCATION

1972 - PLS 878 SET HARRISON MONUMENT, LOCATION DETERMINED BY RETRACEMENT OF SAM MULLEN SURVEY IN SECTION 5.

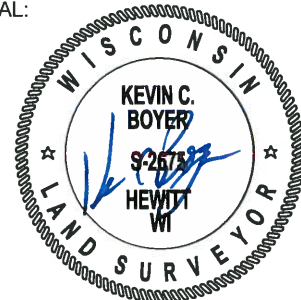
2002 - PLS UNKNOWN REMOVED HARRISON FOR CONSTRUCTION.

2020 - PLS 2675 FOUND MAG NAIL IN THE ROAD SURFACE AND 4 WITNESSES. REMOVED MAG NAIL AND FOUND NO OTHER MONUMENTS EXIST SINCE THE REMOVAL OF THE HARRISON IN 2002 FOR CONSTRUCTION. THE MAG NAIL LOCATION AGREES WITH ALL 4 WITNESSES. ACCEPTED THE MAG NAIL LOCATION AS THE CORNER POSITION. RE-SET A SURVEY NAIL IN THE MAG NAIL LOCATION, SET 3 NEW TIES, MEASURED TO A FOUND PROPERTY IRON AND THE EXISTING WITNESSES.



LOCATION
 (INDICATE CORNER BY "X")

SEAL:



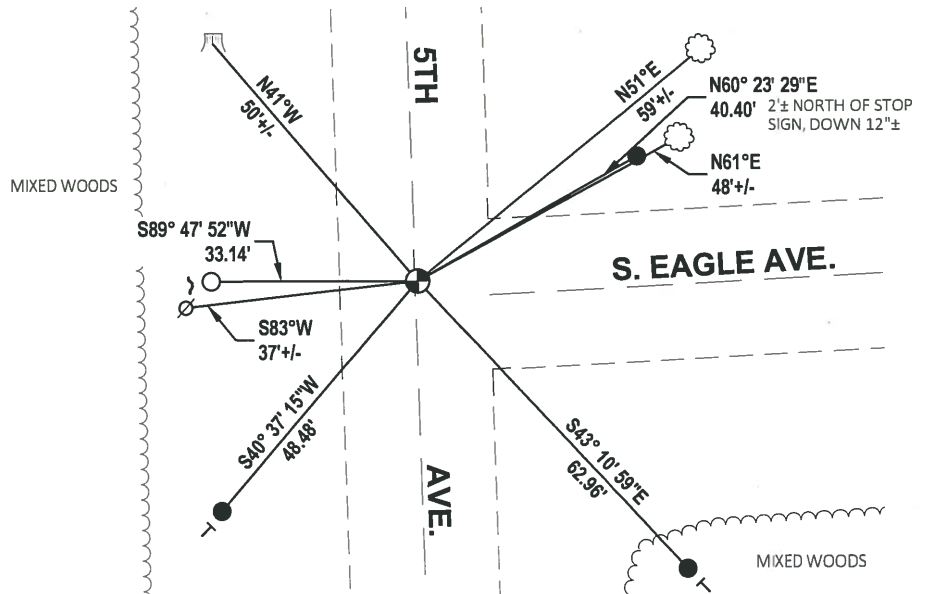
DATA SHOWN HERE ON THIS TIE SHEET IS CORRECT AND COMPLETE TO THE BEST OF MY KNOWLEDGE AND BELIEF.

PROFESSIONAL LAND SURVEYOR

DATE 11/3/2020

- TIE SKETCH

NOTE: THE CORNER LANDS .6± EAST OF 5TH AVE. CENTERLINE.



- SET 3/4" x 18" IRON REBAR, 1.50#/FT
- FOUND 3/4" IRON ROD
- ⊕ RE-SET SURVEY NAIL MONUMENT
- ⊗ WITNESS POWER POLE
- ⌞ STEEL FENCE POST
- └ VINYL "T" POST
- ☁ WITNESS TREE
- ⌵ WITNESS STUMP

ADAMS COUNTY

Survey Monument Record

TYPE OF MONUMENT: 30" HARRISON

STATE PLANE COORDINATES: N _____

E _____

ELEVATION — M.S.L. DATUM: _____

THETA ANGLE: _____

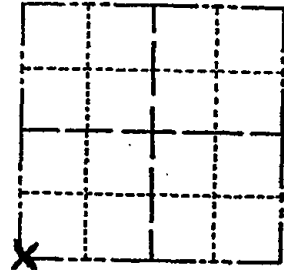
FIELD BOOK: 107 PAGE 31

CORNER NO. 217 (25)

SECTION 4

TOWN 16

RANGE 7



LOCATION
(Indicated by 'X')

SEAL:



BASIS FOR MONUMENT LOCATION

(Use reverse side if necessary)

Show info such as: History of corner, with reference to Vol. and pg. dates, surveyor; exact description of monument replaced; if location computed, by taped or EDM traverse; landowner remarks, etc.

Set monument

November 1, 1972

Anthony B. Kiedrowski R.L.S. 878

Location determined by retracement of Sam Mullen survey in Sec. 5.

CORNER	O.K.	2-22-77	GR-SS
"	"	3-22-82	"
"	"	11-26-86	CE
"	"	11-25-91	GR-KK
"	"	12-10-94	SS
"	"	12-28-01	ML

CERTIFIED CORRECT:

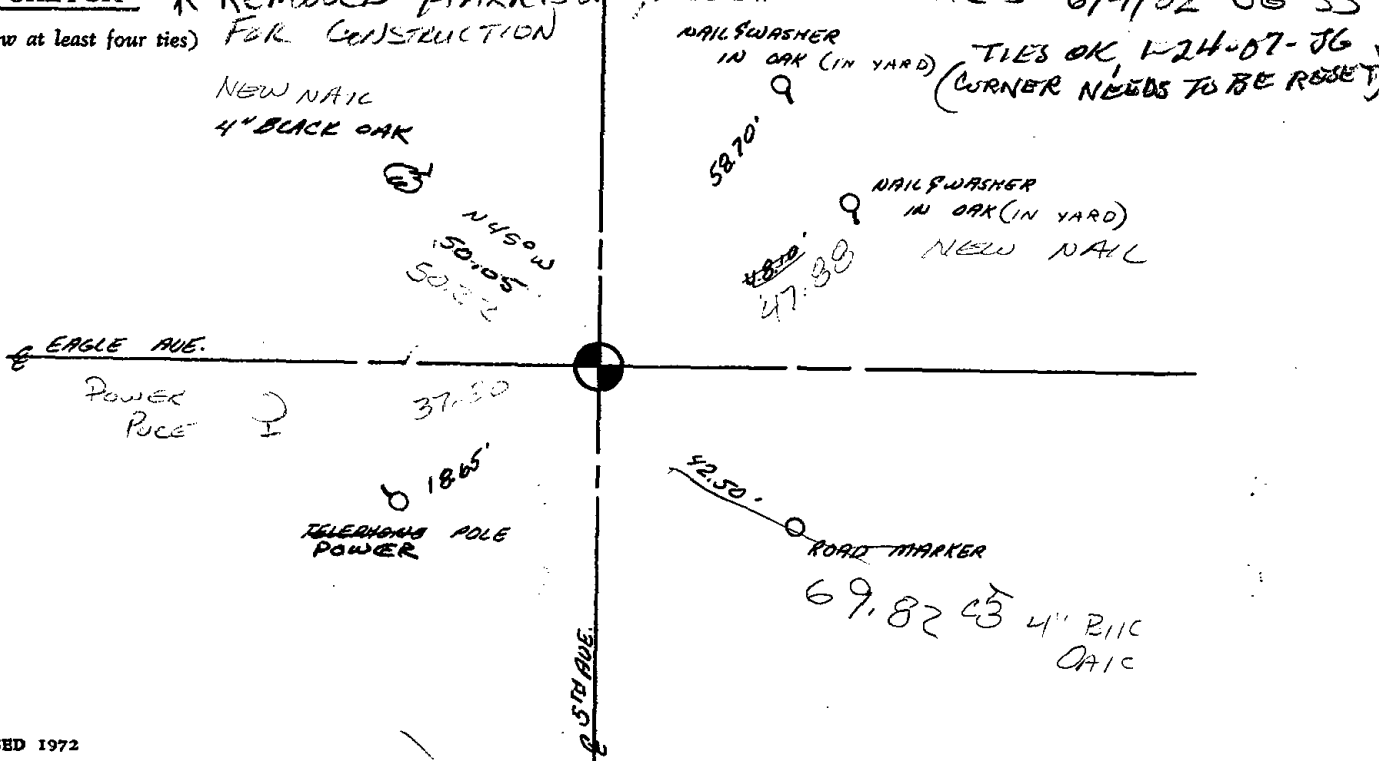
Anthony B. Kiedrowski
Registered Land Surveyor

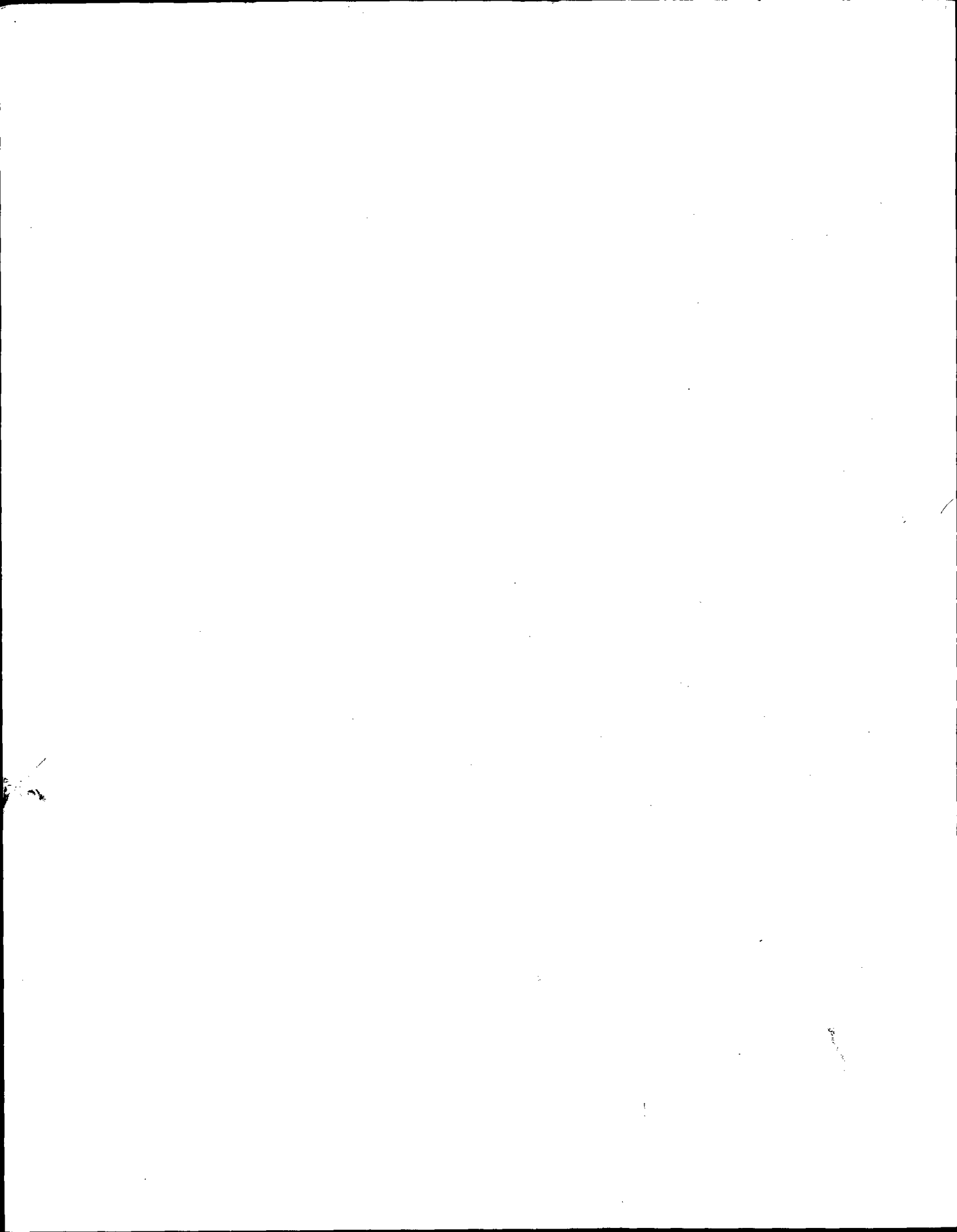
DATE: _____

TIE SKETCH

(Show at least four ties)

* REMOVED HARRISON, ADDED NEW TIES 6/4/02 56-SS FOR CONSTRUCTION





ADAMS COUNTY

Survey Monument Record

TYPE OF MONUMENT: 30" HARRISON

STATE PLANE COORDINATES: N _____

E _____

ELEVATION — M.S.L. DATUM: _____

THETA ANGLE: _____

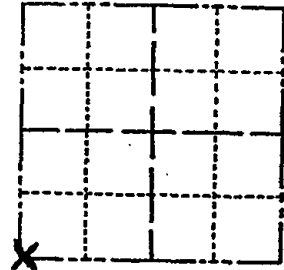
FIELD BOOK: 107 PAGE 31

CORNER NO. 217 (25)

SECTION 4

TOWN 16

RANGE 7



LOCATION
(Indicated by 'X')

SEAL:



BASIS FOR MONUMENT LOCATION

(Use reverse side if necessary)

Show info such as: History of corner, with reference to Vol. and pg. dates, surveyor; exact description of monument replaced; if location computed, by taped or EDM traverse; landowner remarks, etc.

Set monument

November 1, 1972

Anthony B. Kiedrowski R.L.S. 878

Location determined by retracement of Sam Mullen survey in Sec. 5.

CORNER	O.K.	2-22-77	GR-SS
"	"	3-22-82	"
"	"	11-26-86	CE
"	"	11-25-91	GR-KK
"	"	12-10-94	SS
"	"	12-28-01	ML

CERTIFIED CORRECT:

Anthony B. Kiedrowski
Registered Land Surveyor

DATE: _____

TIE SKETCH

(Show at least four ties)

* REMOVED HARRISON, ADDED NEW TIES 6/4/02 56-SS FOR CONSTRUCTION

