

04
SECTION

16
TOWN

07
RANGE

ADAMS COUNTY

COUNTY CORNER NO: 27

ROMPORTOL ID: 41607040000

PUBLIC LAND SURVEY MONUMENT RECORD

TYPE OF MONUMENT: HARRISON
ADAMS COUNTY COORDINATES, NAD 83 (2007)

N. 191188.954

E. 573321.004

ELEVATION- DATUM

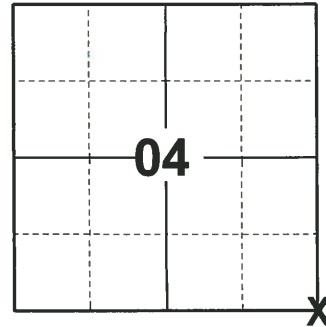
FIELD WORK DATE: 08/27/2020

BASIS FOR MONUMENT LOCATION

1973 - PLS 878 SET BY RETRACEMENT OF SURVEY TO SOUTH. FOUND LARGE STONE AT THIS POINT AND SET ONLY THE TOP 12" OF A HARRISON MONUMENT ON TOP.

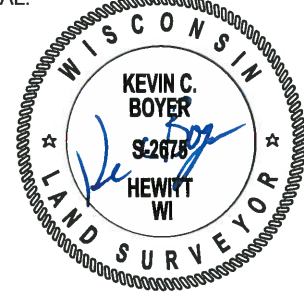
1974 - PLS 1103 PREVIOUSLY SET HARRISON MONUMENT WAS DESTROYED DURING THE CONSTRUCTION OF 4TH AVE. AND EAGLE AVE. RE-SET CORNER FROM EXISTING OLD TIES AND TOOK NEW TIES.

2020 - PLS 2675 FOUND HARRISON FLUSH WITH THE GROUND, 1 TIE AND 1 WITNESS. THE MONUMENT AGREES WITH BOTH THE TIE AND WITNESS. ACCEPTED THE HARRISON AS THE CORNER LOCATION. SET 3 NEW TIES AND MEASURED TO THE EXISTING TIE AND WITNESS.



LOCATION
(INDICATE CORNER BY "X")

SEAL:



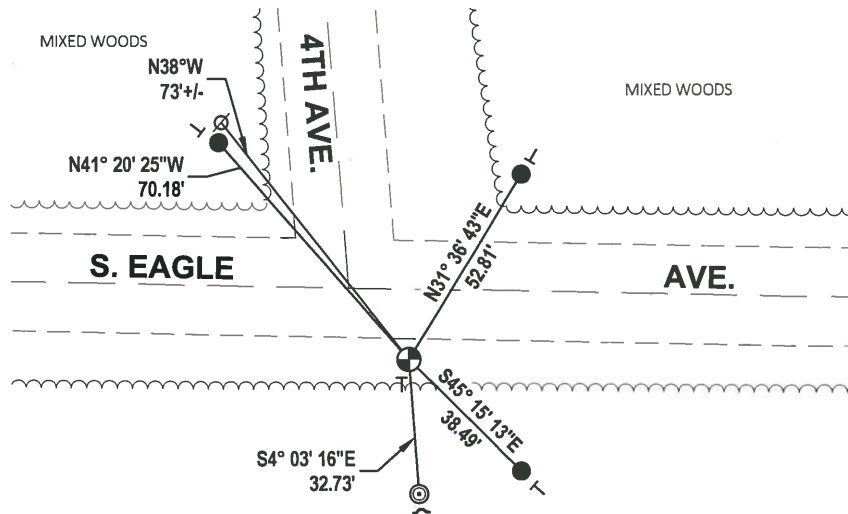
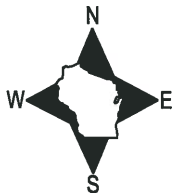
DATA SHOWN HERE ON THIS TIE SHEET IS CORRECT AND COMPLETE TO THE BEST OF MY KNOWLEDGE AND BELIEF.

PROFESSIONAL LAND SURVEYOR

DATE 11/3/2020

- TIE SKETCH

NOTE: THE CORNER LANDS 17'± SOUTH OF S. EAGLE AVE. CENTERLINE.



- SET 3/4" x 18" IRON REBAR, 1.50#/FT
- ◎ FOUND CRIMPED 2-3/8" O.D. IRON PIPE
- ⊕ FOUND HARRISON MONUMENT
- ∅ WITNESS POWER POLE
- ↙ STEEL FENCE POST
- ┌ VINYL "T" POST

MIXED WOODS

ADAMS COUNTY

Survey Monument Record

TYPE OF MONUMENT: Standard Harrison

STATE PLANE COORDINATES: N _____
E _____

ELEVATION — M.S.L. DATUM: _____

THETA ANGLE: _____

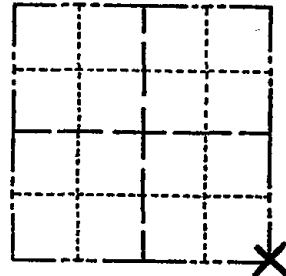
FIELD BOOK: _____ PAGE _____

CORNER NO. 223 ⁽²⁷⁾

SECTION 4

TOWN 16

RANGE 7



LOCATION
(Indicated by 'X')

SEAL:

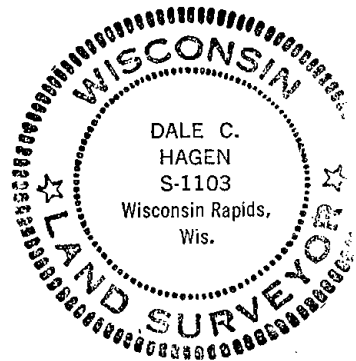
BASIS FOR MONUMENT LOCATION

(Use reverse side if necessary)

Show info such as: History of corner, with reference to Vol. and pg, dates, surveyor; exact description of monument replaced; if location computed, by taped or EDM traverse; landowner remarks, etc.

Previously set Harrison Monument was destroyed during the construction of 4th Avenue and Eagle Avenue.

Re-set corner from existing old ties and took new ties.



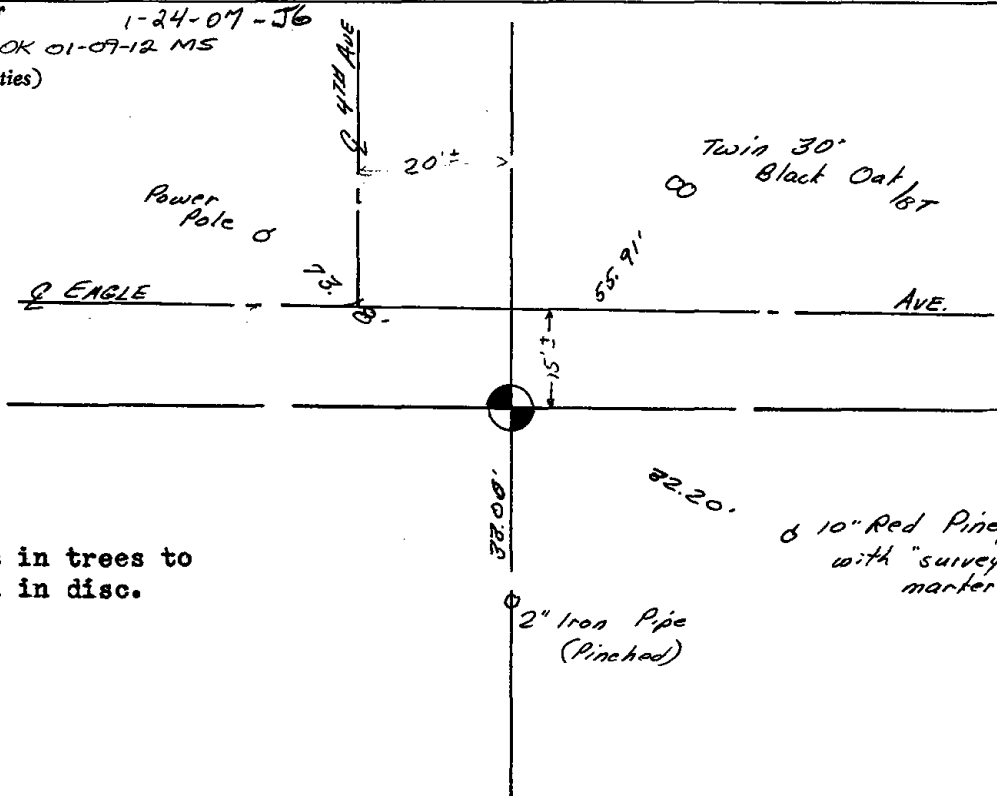
CORNER	O.K.	2-24-77	GR-SS
"	"	4-12-82	"
"	"	11-26-86	GR
"	"	12-30-91	GR-JG
"	"	12-27-96	JG
"	"	12-28-01	ML

CERTIFIED CORRECT:

Dale C. Hagen
Registered Land Surveyor

DATE: Oct. 2, 1974

TIE SKETCH ["] 1-24-07-JG
OK 01-07-12 MS
(Show at least four ties)

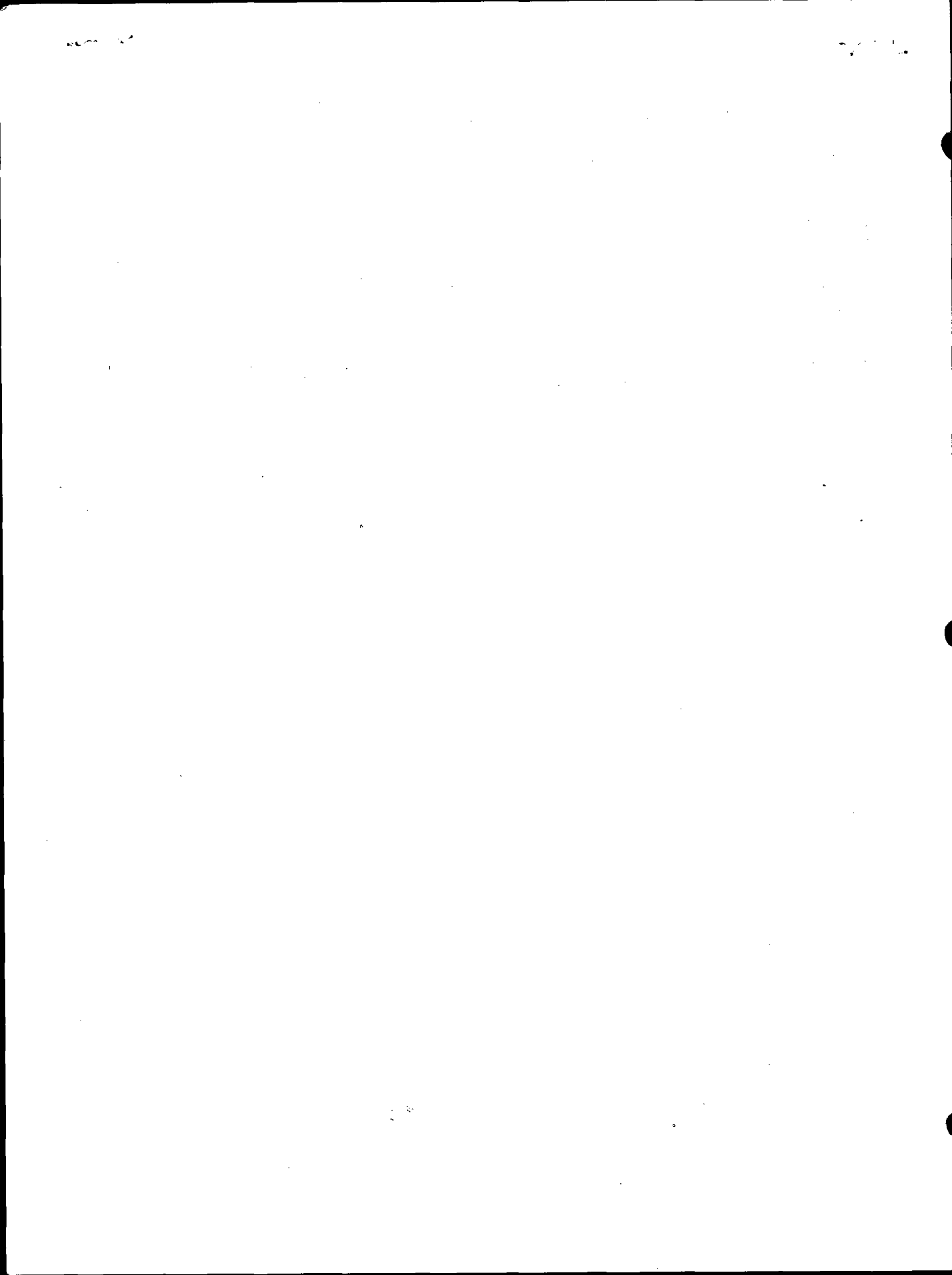


NOTE:

Ties in trees to nail in disc.

2" Iron Pipe (Pinched)

6 10" Red Pine 1/8" with "survey" marker sign



ADAMS COUNTY

Survey Monument Record

TYPE OF MONUMENT: ~~Top 12" of~~ Harrison standard

STATE PLANE COORDINATES: N _____
E _____

ELEVATION — M.S.L. DATUM: _____

THETA ANGLE: _____

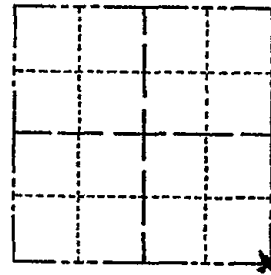
FIELD BOOK: 107 PAGE 38

CORNER NO. 223

SECTION 4

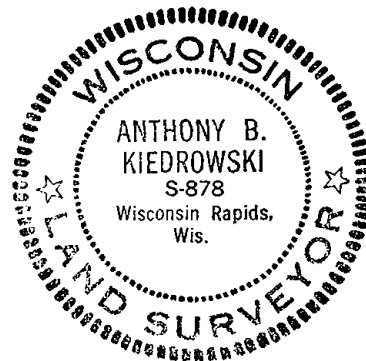
TOWN 16

RANGE 7



LOCATION
(Indicated by 'X')

SEAL:



BASIS FOR MONUMENT LOCATION

(Use reverse side if necessary)

Show info such as: History of corner, with reference to Vol. and pg, dates, surveyor; exact description of monument replaced; if location computed, by taped or EDM traverse; landowner remarks, etc.

Set by retracement of survey to south.
Found large stone at this point and set only the top 12" of a Harrison monument on top.

CERTIFIED CORRECT:

Anthony B. Kiedrowski
Registered Land Surveyor

DATE: 2-22-73

TIE SKETCH

(Show at least four ties)

