

PUBLIC LAND SURVEY MONUMENT RECORD

TYPE OF MONUMENT: HARRISON
 ADAMS COUNTY COORDINATES, NAD 83 (2007)

N. 191217.082

E. 575965.530

ELEVATION- _____ DATUM _____

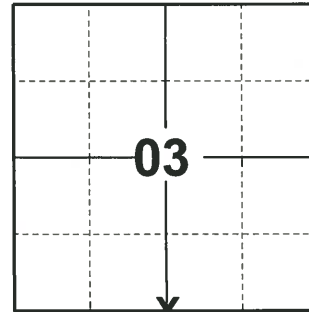
FIELD WORK DATE: 08/27/2020

BASIS FOR MONUMENT LOCATION

1974 - PLS 1103 RAN EDM/TRANSIT TRAVERSE OF SECTIONS 2, 3, AND 4 OF THE TOWN OF NEW CHESTER AND SECTIONS 34 AND 35 OF THE TOWN OF LINCOLN. DID NOT EXCAVATE BECAUSE SEARCH AREA FELL IN CUT SECTION OF ROAD. ESTABLISHED CORNER BY SINGLE PROPORTIONATE MEASURE BETWEEN SOUTHEAST AND SOUTHWEST SECTION CORNERS.

2008 - PLS 2559 FOUND HARRISON MONUMENT 0.5' BELOW SURFACE AND ACCEPTED IT AS THE TRUE CORNER LOCATION. THEN SET ACCESSORIES.

2020 - PLS 2675 FOUND HARRISON 6"± BELOW THE ROAD SURFACE, 3 TIES, AND 1 WITNESS. THE MONUMENT AGREES WITH ALL TIES AND WITNESS. ACCEPTED THE HARRISON AS THE CORNER LOCATION. SET 1 NEW TIE AND MEASURE TO THE EXISTING TIES AND WITNESS.



LOCATION
 (INDICATE CORNER BY "X")

SEAL:



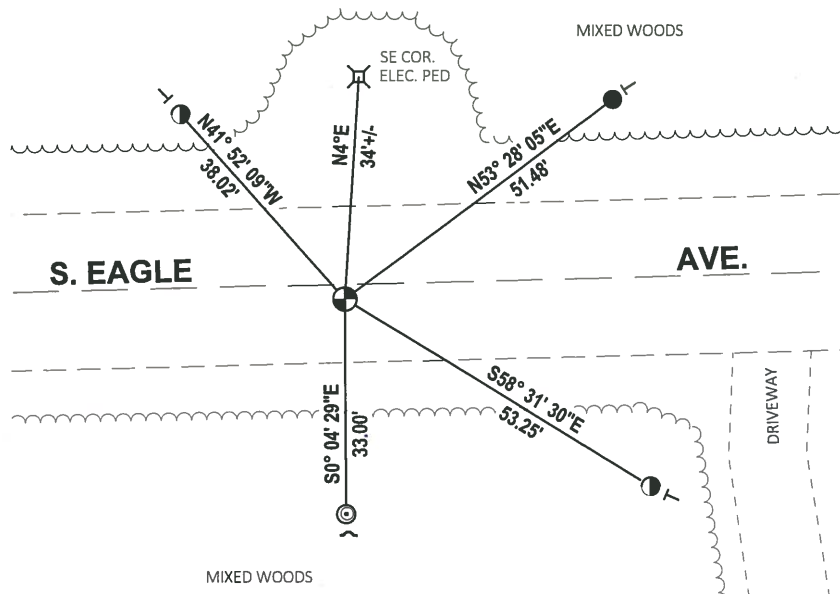
DATA SHOWN HERE ON THIS TIE SHEET IS CORRECT AND COMPLETE TO THE BEST OF MY KNOWLEDGE AND BELIEF.

PROFESSIONAL LAND SURVEYOR

DATE 11/3/2020

TIE SKETCH

NOTE: THE CORNER LANDS 3'± SOUTH OF S. EAGLE AVE. CENTERLINE.



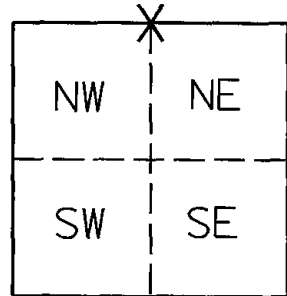
- SET 3/4" x 18" IRON REBAR, 1.50#/FT
- ⊙ FOUND 1/2" IRON ROD
- ⊙ FOUND 2-3/8" O.D. IRON PIPE
- ⊕ FOUND HARRISON MONUMENT
- ↙ STEEL FENCE POST
- └ VINYL "T" POST

U. S. Public Land Survey Monument Record

ADAMS COUNTY

CORNER NO. 28
 SECTION 10
 TOWN 16 N
 RANGE 07 E

TYPE OF MONUMENT: Harrison Monument
 STATE PLANE COORDINATES: N _____
 E _____
 ELEVATION -- M.S.L. DATUM: _____
 THETA ANGLE: _____
 FIELD BOOK: _____



LOCATION
(Indicated by "X")

BASIS FOR MONUMENT LOCATION

(Use reverse side if necessary)

Show information such as: History of corner, with reference to Vol. and pg. dates, surveyor; exact description of monument established by you to perpetuate the location of this point, landowner remarks, etc.

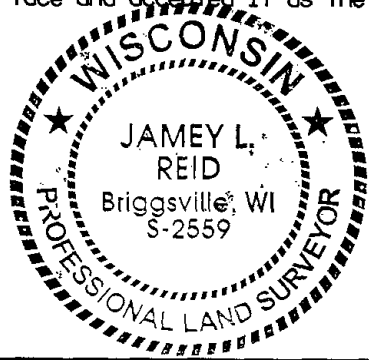
October 2, 1974 - Dale C. Hagen ran EDM / transit traverse of Sections 2, 3 and 4 of the Town of New Chester and Sections 34 and 35 of the Town of Lincoln. Did not excavate because search area fell in cut section of road. Set corner (Harrison Monument) by single proportionate measure between the Southeast and Southwest Section corners.

10-27-08 - I found a Harrison Monument 0.5' below surface and accepted it as the true corner location. I then set accessories as shown.

OK 01-09-12 MS

SURVEYOR'S CERTIFICATE:

This is to certify that the corner location on this record was determined by or under my direction and control and that this US Land Survey Monument Record is correct to the best of my knowledge and belief.

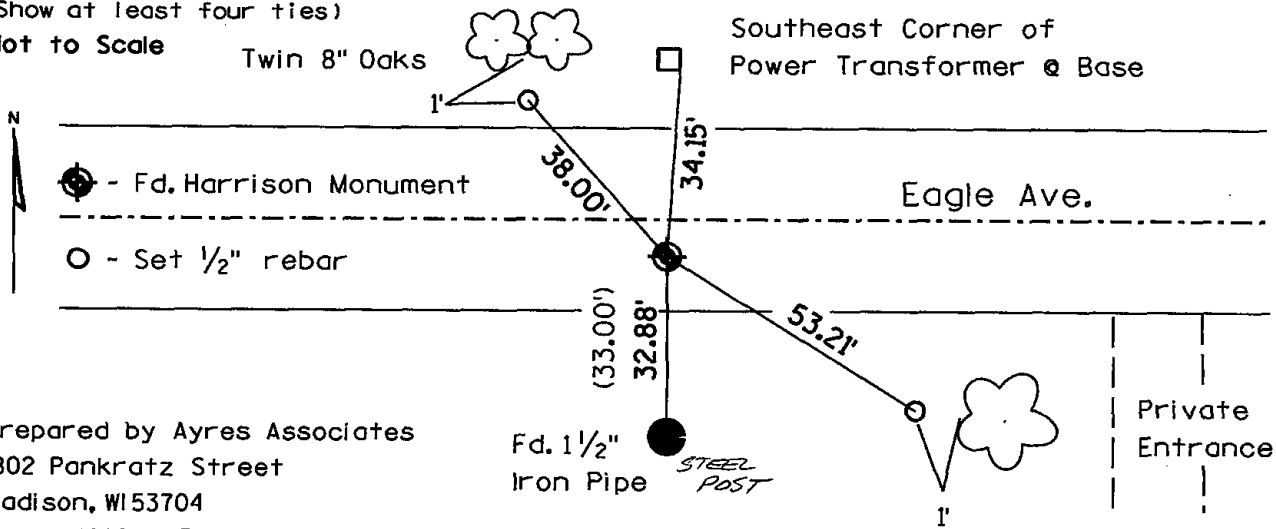


Jamey L. Reid 11-18-08
 Jamey L. Reid RLS-2559

TIE SKETCH

(Show at least four ties)

Not to Scale



Prepared by Ayres Associates
 1802 Pankratz Street
 Madison, WI 53704
 phone: (608)-443-1200

ADAMS COUNTY

Survey Monument Record

TYPE OF MONUMENT: Harrison Monument

STATE PLANE COORDINATES: N _____

E _____

ELEVATION — M.S.L. DATUM: _____

THETA ANGLE: _____

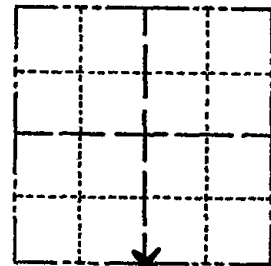
FIELD BOOK: _____ PAGE _____

CORNER NO. 594

SECTION 3

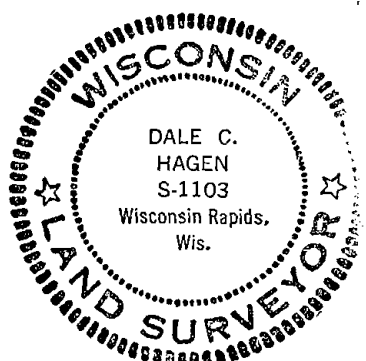
TOWN 16

RANGE 7



LOCATION
(Indicated by 'X')

SEAL:



BASIS FOR MONUMENT LOCATION

(Use reverse side if necessary)

Show info such as: History of corner, with reference to Vol. and pg, dates, surveyor; exact description of monument replaced; if location computed, by taped or EDM traverse; landowner remarks, etc.

Ran EDM/transit traverse of Sections 2, 3, and 4 of the Town of New Chester and Sections 34 and 35 of the Town of Lincoln.

Did not excavate because search area fell in search cut section of road.

Established corner by single proportionate measure between Southeast and Southwest section corners.

CORNER	O.K.	2-24-77	GR-SS
"	"	4-12-82	"
"	"	12-30-91	GR-SG
"	"	1-02-02	ML
"	"	1-24-07	JG

CERTIFIED CORRECT:
Dale C. Hagen
 Registered Land Surveyor
 DATE: October 2, 1974

TIE SKETCH

(Show at least four ties)

NOTE:

Ties to nail in disc.

