

## PUBLIC LAND SURVEY MONUMENT RECORD

TYPE OF MONUMENT: HARRISON (BROKEN-TOP)  
 ADAMS COUNTY COORDINATES, NAD 83 (2007)

N. 188564.245

E. 573309.581

ELEVATION-      DATUM     

FIELD WORK DATE: 09/16/2020

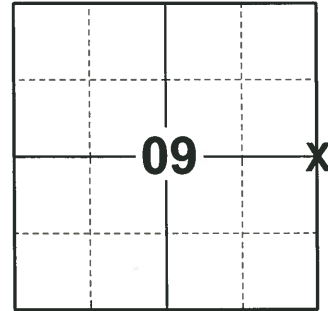
### BASIS FOR MONUMENT LOCATION

1971 - PLS 981 FOUND IRON PIPE AND SET MONUMENT.

2008 - PLS 2663 PRIOR TO ROAD CONSTRUCTION, FOUND A HARRISON MONUMENT AND RECORDED ITS LOCATION. AFTER ROAD CONSTRUCTION, FOUND A HARRISON MONUMENT UNDISTURBED AT THE RECORDED LOCATION AND SET 4 NEW WITNESS MONUMENTS.

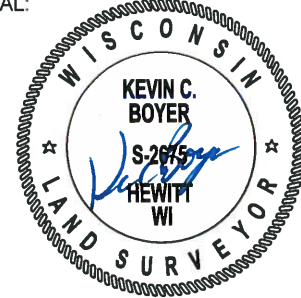
2008 - PLS 2995 FOUND SURVEY MARKER NAIL AT SURFACE AND ACCEPTED IT AS THE TRUE CORNER LOCATION. BELIEVED THAT THE MONUMENT WAS REMOVED OR COVERED DURING THE CTH E CONSTRUCTION (2008) THEN ESTABLISHED ACCESSORIES.

2020 - PLS 2675 FOUND HARRISON (BROKEN-TOP) 16"± BELOW THE ROAD SURFACE, 4 TIES, AND 3 WITNESSES. THE MONUMENT AGREES WITH ALL THE TIES AND WITNESSES. ACCEPTED THE HARRISON (BROKEN-TOP) AS THE CORNER LOCATION AND MEASURED TO THE EXISTING TIES AND WITNESSES.



**LOCATION**  
 (INDICATE CORNER BY "X")

SEAL:

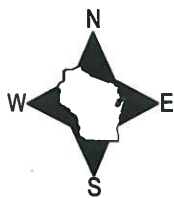


DATA SHOWN HERE ON THIS TIE SHEET IS CORRECT AND COMPLETE TO THE BEST OF MY KNOWLEDGE AND BELIEF.

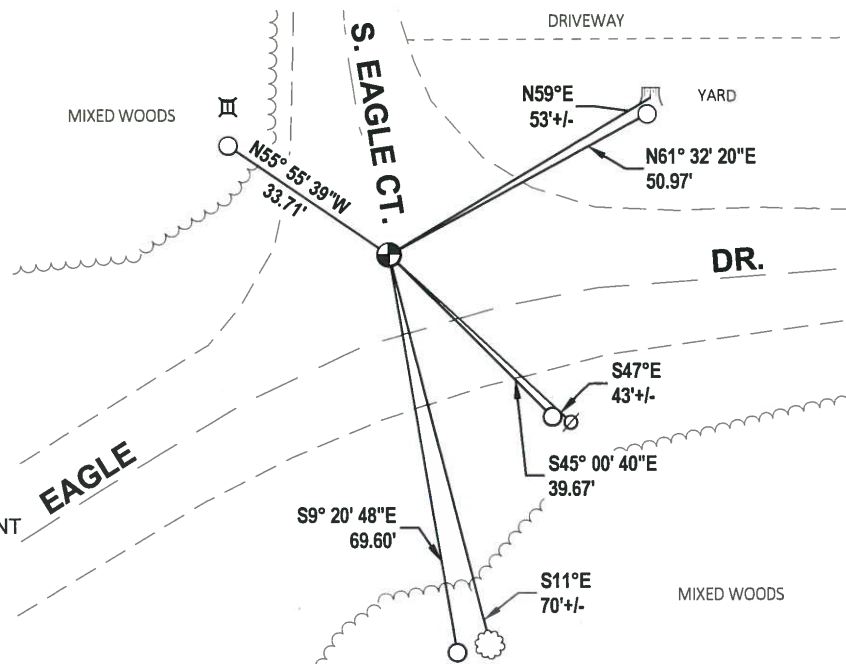
PROFESSIONAL LAND SURVEYOR

DATE 11/3/2020

### - TIE SKETCH



- FOUND 3/4" IRON ROD
- ⊕ FOUND HARRISON (BROKEN-TOP) MONUMENT
- ⊗ WITNESS POWER POLE
- ⊙ WITNESS TREE
- ⊠ TELEPHONE PED
- ⊡ WITNESS STUMP



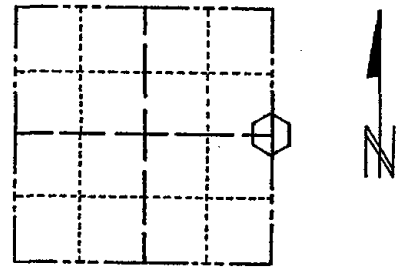


ADAMS COUNTY

Survey Monument Record

TYPE OF MONUMENT: 30" HARRISON
STATE PLANE COORDINATES: N
E
ELEVATION - M.S.L. DATUM:
THETA ANGLE:
FIELD BOOK: 104 PAGE 48

CORNER NO. 16
SECTION 9
TOWN 16
RANGE 7



LOCATION (Indicated by 'X')

SEAL:

BASIS FOR MONUMENT LOCATION

(Use reverse side if necessary)

Show info such as: History of corner, with reference to Vol. and pg, dates, surveyor; exact description of monument replaced; if location computed, by taped or EDM traverse; landowner remarks, etc.

Found iron pipe and set monument

July 14, 1971

Sam T. Mullen R.L.S. S-981

Table with 4 columns: CORNER, O.K., Date, and Surveyor. Rows include dates like 2-24-71, 4-82, 12-30-91, 12-6-96, 1-02-02 and surveyors GR-SS, GR-SS, GR, GR-JG, SS, ML.

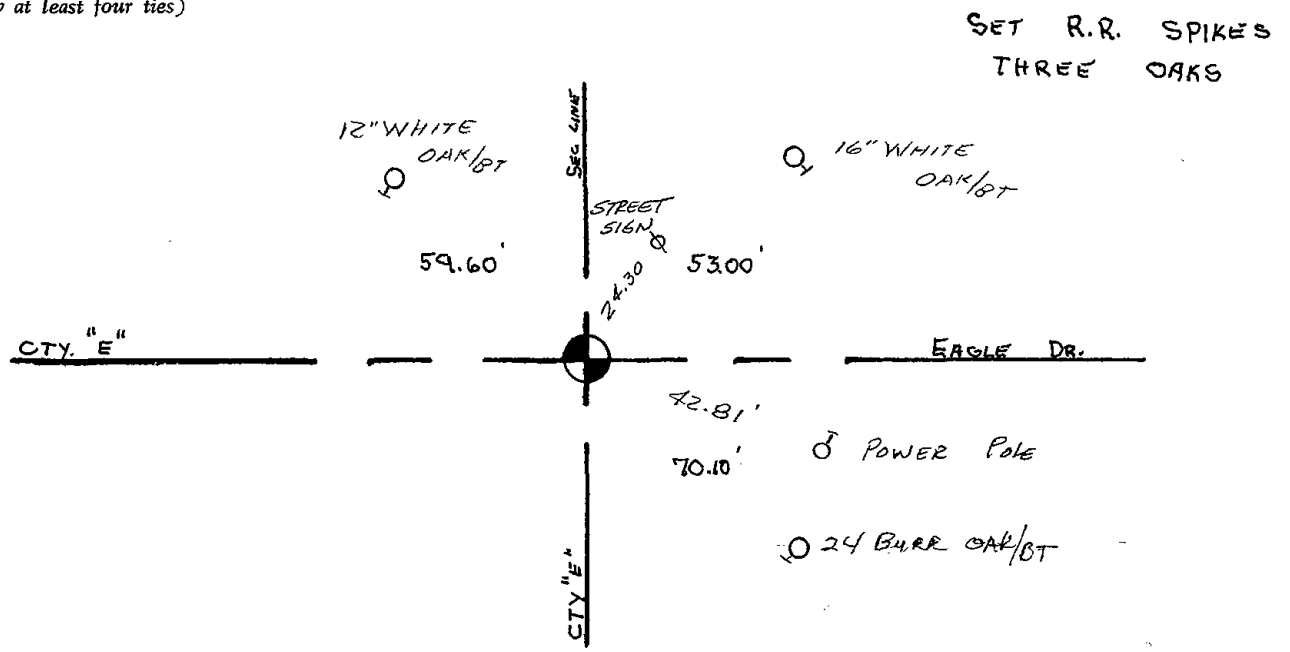
CERTIFIED CORRECT:

Registered Land Surveyor

DATE:

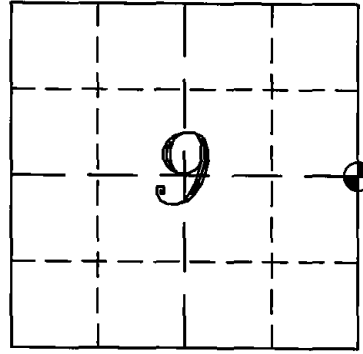
TIE SKETCH OK - 2-20-07-JG

(Show at least four ties)



ADAMS COUNTY  
SURVEY MONUMENT RECORD

GOVERNMENT CORNER: E1/4 SEC 9 T16N R7E  
 TYPE OF MONUMENT: HARRISON  
 STATE PLANE COORDINATES: N \_\_\_\_\_  
 E \_\_\_\_\_  
 ELEVATION: \_\_\_\_\_  
 FIELD BOOK: \_\_\_\_\_ PAGE \_\_\_\_\_



CORNER NO. 37  
 SECTION 9  
 TOWN 16 NORTH  
 RANGE 7 EAST  
 NEW CHESTER  
 CITY, VILLAGE, TOWN



BASIS FOR CORNER LOCATION:

PRIOR TO ROAD CONSTRUCTION (D.O.T. PROJECT NO. 6378-01-71, FOUND A HARRISON MONUMENT AND RECORDED ITS LOCATION.  
 AFTER ROAD CONSTRUCTION, FOUND HARRISON MONUMENT UNDISTURBED AT THE RECORDED LOCATION AND SET FOUR NEW WITNESS MONUMENTS.



REGISTERED LAND SURVEYOR  
 DATE: 19 SEPTEMBER 2008

TIE SKETCH

