

12 SECTION 16 TOWN 07 RANGE

# ADAMS COUNTY

COUNTY CORNER NO: 40  
 ROMPORTOL ID: 41607122000

## PUBLIC LAND SURVEY MONUMENT RECORD

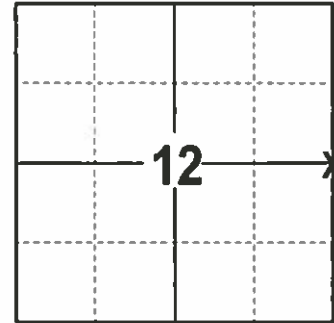
TYPE OF MONUMENT: HARRISON  
 ADAMS COUNTY COORDINATES, NAD 83 (2007)

N. 188582.636

E. 589169.597

ELEVATION- --- DATUM ---

FIELD WORK DATE: 1/19/2017



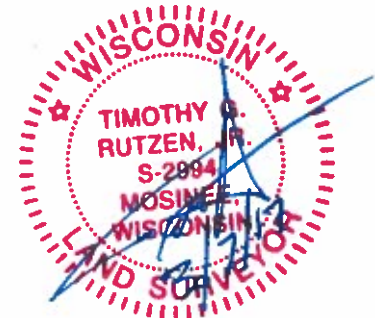
**LOCATION**  
 (INDICATE CORNER BY "X")

### BASIS FOR MONUMENT LOCATION

1977 - PLS 1103 TRAVERSED SECTIONS 1 AND 12 AND PORTIONS OF ADJOINING SECTIONS TO DETERMINE SEARCH AREAS FOR INVESTIGATION. EXCAVATED WITH A BACKHOE AND FOUND NO EVIDENCE OF THE ORIGINAL CORNER OR ANY SUBSEQUENT REMONUMENTATION. NO EVIDENCE OF ANY BEARING TREES WERE FOUND. SET A HARRISON BY SINGLE PROPORTIONATE MEASURE ON LINE BETWEEN ADJACENT CORNERS.

2017 - PLS 2994 FOUND EXISTING HARRISON 8 INCHES BELOW THE THE SHOULDER SURFACE AND 3 EXISTING TIES. THE HARRISON AGREES WITH THE EXISTING TIES. ACCEPTED HARRISON AND SET 1 NEW TIE AND MEASURED TO THE 3 EXISTING TIES.

SEAL:



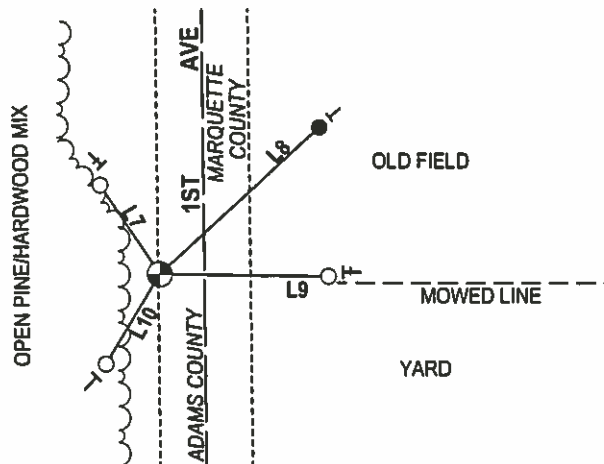
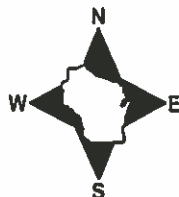
DATA SHOWN HERE ON THIS TIE SHEET IS CORRECT AND COMPLETE TO THE BEST OF MY KNOWLEDGE AND BELIEF.

PROFESSIONAL LAND SURVEYOR

DATE 3/7/17

### - TIE SKETCH

NOTE: THE CORNER FALLS 11.5' WEST OF THE CENTERLINE OF 1ST AVE.



- 3/4" x 18" IRON REBAR SET, 1.50#/FT
- FOUND 1" OD IRON PIPE
- ⊕ FOUND HARRISON
- VINYL "T" POST
- STEEL "T" POST

LINE	BEARING	DISTANCE
L7	N 34°11'23" W	27.83'
L8	N 47°29'56" E	56.42'
L9	N 89°20'17" W	43.97'
L10	S 31°11'27" W	27.32'

# ADAMS COUNTY

## Survey Monument Record

TYPE OF MONUMENT: Harrison

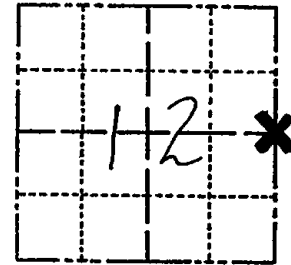
STATE PLANE COORDINATES: N \_\_\_\_\_  
E \_\_\_\_\_

ELEVATION — M.S.L. DATUM: \_\_\_\_\_

THETA ANGLE: \_\_\_\_\_

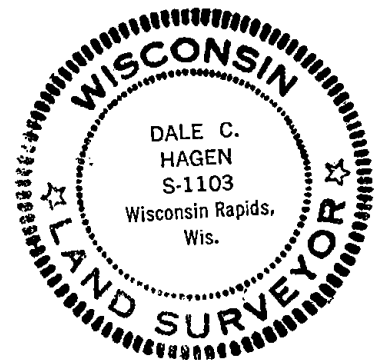
FIELD BOOK: 37 PAGE 57

CORNER NO. 40  
SECTION 12  
TOWN 16  
RANGE 7



LOCATION  
(Indicated by 'X')

SEAL:



### BASIS FOR MONUMENT LOCATION

(Use reverse side if necessary)

Show info such as: History of corner, with reference to Vol. and pg, dates, surveyor; exact description of monument replaced; if location computed, by taped or EDM traverse; landowner remarks, etc.

Ran EDM/T2 traverse around Sections 1 and 12 and to portions of adjoining sections to determine search areas for investigation.

Excavation with backhoe yielded no evidence of the original corner or any subsequent remonumentation. Was also unable to find any evidence of bearing trees.

Relocated corner by single proportionate measure on line between adjacent section corners.

Set Harrison on 7-8-76.

Cor. OK	3-22-82	GR-SS
" "	12-12-86	GR
" "	12-23-91	KZ-SS
" "	12-18-96	SS

CERTIFIED CORRECT:

Dale C Hagen  
Registered Land Surveyor  
DATE: 5-31-77

TIE SKETCH OK 1-02-02 - ML  
OK 2-20-07 - JG  
(Show at least four ties) OK 01-11-12 MS

### NOTE

Ties in trees to nail in disc.

