

PUBLIC LAND SURVEY MONUMENT RECORD

TYPE OF MONUMENT: HARRISON
 ADAMS COUNTY COORDINATES, NAD 83 (2007)

N. 185864.313

E. 565393.534

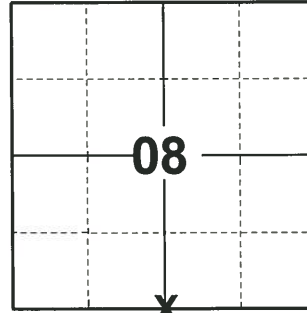
ELEVATION- DATUM

FIELD WORK DATE: 09/17/2020

BASIS FOR MONUMENT LOCATION

1977 - PLS 878 SET ON A STRAIGHT LINE EQUIDISTANT BETWEEN SECTION CORNERS. CORNER SET PRIOR TO MAY 1974. RECORDS LOST IN A FIRE. RETIED 7/7/76.

2020 - PLS 2675 FOUND HARRISON 24"± BELOW THE ROAD SURFACE, 1 TIE, AND 1 WITNESS. THE MONUMENT AGREES WITH THE EXISTING TIE AND WITNESS. ACCEPTED THE HARRISON AS THE CORNER LOCATION. SET 4 NEW TIES AND MEASURED TO THE EXISTING TIE AND WITNESS.



LOCATION
 (INDICATE CORNER BY "X")

SEAL:



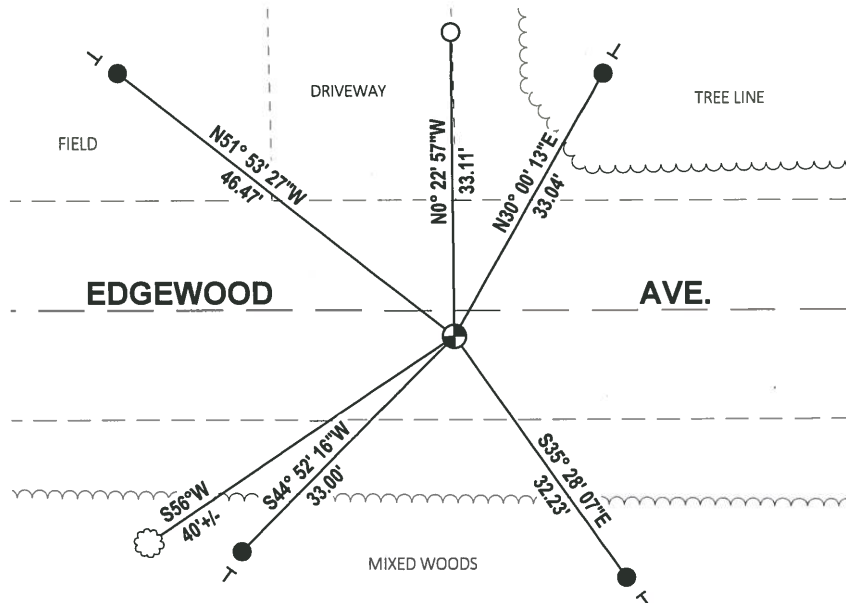
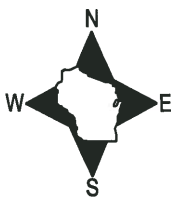
DATA SHOWN HERE ON THIS TIE SHEET IS CORRECT AND COMPLETE TO THE BEST OF MY KNOWLEDGE AND BELIEF.

PROFESSIONAL LAND SURVEYOR

DATE 11/3/2020

- TIE SKETCH

NOTE: THE CORNER LANDS 3'± SOUTH OF EDGEWOOD AVE. CENTERLINE.



- SET 3/4" x 18" IRON REBAR, 1.50#/FT
- FOUND 3/4" IRON ROD
- ⊕ FOUND HARRISON MONUMENT
- ┆ VINYL "T" POST
- ☼ WITNESS TREE

ADAMS COUNTY

Survey Monument Record

TYPE OF MONUMENT: Harrison

STATE PLANE COORDINATES: N _____

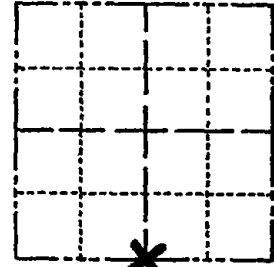
E _____

ELEVATION — M.S.L. DATUM: _____

THETA ANGLE: _____

FIELD BOOK: 37 PAGE 53

CORNER NO. 44
 SECTION 8
 TOWN 16
 RANGE 7



LOCATION
(Indicated by 'X')

SEAL:

BASIS FOR MONUMENT LOCATION

(Use reverse side if necessary)

Show info such as: History of corner, with reference to Vol. and pg, dates, surveyor; exact description of monument replaced; if location computed, by taped or EDM traverse; landowner remarks, etc.

Set on a straight line equidistant between section corners.

Corner set prior to May, 1974. Records lost in a fire. Retied 7/7/76.



CORNER	OK	4-20-82	GR-SS
"	"	"-26-86	
"	"	12-26-91	
"	"	12-27-96	JG
"	"	12-14-01	ML

2-GONE, 3-NEW TIE MON. OK, 6-5-07 JG-SS
 1-NEW TIE 01-11-12 MS

CERTIFIED CORRECT:

Anthony B. Kiedrowski
 Registered Land Surveyor

DATE: 7/5/77

TIE SKETCH

(Show at least four ties)

