

09
SECTION

16
TOWN

07
RANGE

ADAMS COUNTY

COUNTY CORNER NO: 47

ROMPORTOL ID: 41607090000

PUBLIC LAND SURVEY MONUMENT RECORD

TYPE OF MONUMENT: HARRISON (BROKEN-TOP)

ADAMS COUNTY COORDINATES, NAD 83 (2007)

N. 185922.756

E. 573327.933

ELEVATION- DATUM

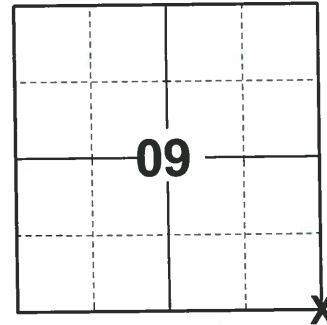
FIELD WORK DATE: 09/16/2020

BASIS FOR MONUMENT LOCATION

1975 - PLS 1103 RAN EDM/TRANSIT TRAVERSE AROUND SECTIONS 9 AND 16 AND TO ADJACENT SECTION CORNERS TO DETERMINE SEARCH AREAS. EXCAVATION WITH BACKHOE YIELDED NO EVIDENCE OF THE ORIGINAL CORNER OR ANY SUBSEQUENT REMONUMENTATION. SET CORNER BY DOUBLE PROPORTIONATE MEASURE BETWEEN ADJACENT GOVERNMENT CORNERS.

2008 - PLS 2663 PRIOR TO ROAD CONSTRUCTION FOUND HARRISON MONUMENT AND RECORDED LOCATION. AFTER COMPLETION OF ROAD CONSTRUCTION SET 30IN. HARRISON MONUMENT AND 4 NEW WITNESS MONUMENTS.

2020 - PLS 2675 FOUND HARRISON (BROKEN-TOP) 12"± BELOW THE ROAD SURFACE AND 4 TIES. THE MONUMENT AGREES WITH ALL 4 TIES. ACCEPTED THE HARRISON (BROKEN-TOP) AS THE CORNER LOCATION. MEASURED TO A FOUND RIGHT-OF-WAY IRON AND THE EXISTING TIES.



LOCATION
(INDICATE CORNER BY "X")

SEAL:



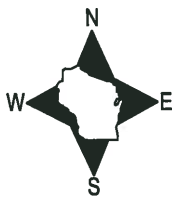
DATA SHOWN HERE ON THIS TIE SHEET IS CORRECT AND COMPLETE TO THE BEST OF MY KNOWLEDGE AND BELIEF.

PROFESSIONAL LAND SURVEYOR

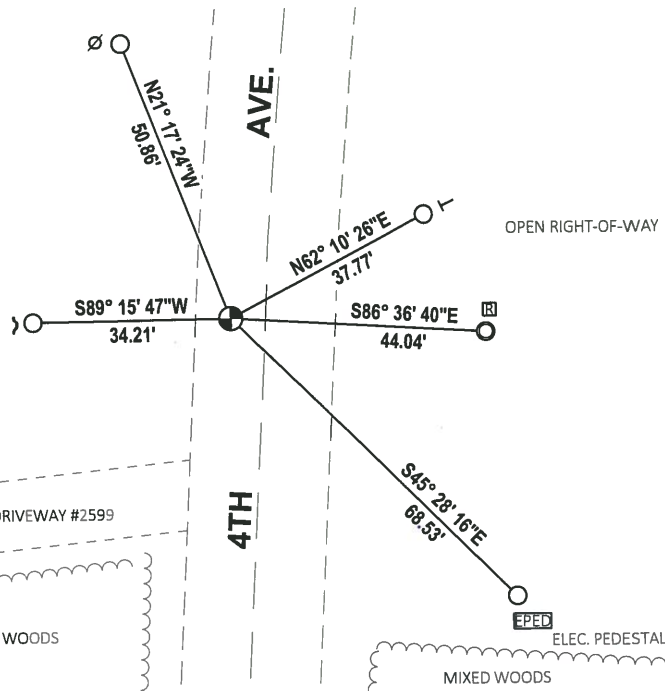
DATE 11/3/2020

- TIE SKETCH

NOTE: THE CORNER LANDS 6'± WEST OF 4TH AVE. CENTERLINE.



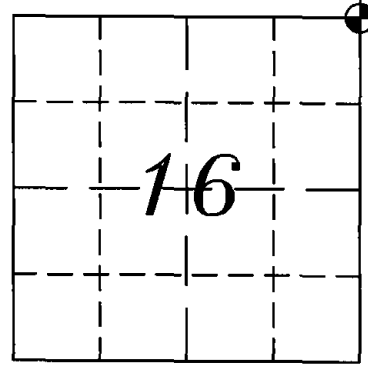
YARD



- FOUND 3/4" IRON ROD
- ⊙ FOUND 1-1/4" O.D. IRON PIPE
- ⊕ FOUND HARRISON (BROKEN-TOP) MONUMENT
- ∅ POWER POLE
- ┌ STEEL FENCE POST
- └ VINYL "T" POST
- ⊠ RIGHT-OF-WAY GUARD POST

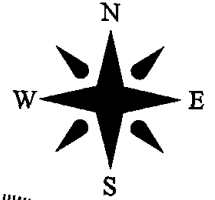
ADAMS COUNTY
SURVEY MONUMENT RECORD

GOVERNMENT CORNER: NE CORNER SEC 16 T16N R7E
 TYPE OF MONUMENT: HARRISON
 STATE PLANE COORDINATES: N _____
 E _____
 ELEVATION: _____
 FIELD BOOK: _____ PAGE _____



CORNER NO. 47

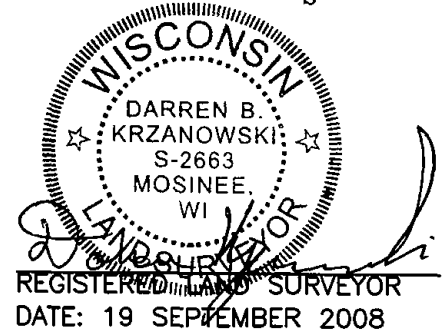
SECTION 16
 TOWN 16 NORTH
 RANGE 7 EAST
 NEW CHESTER
 CITY, VILLAGE, TOWN



BASIS FOR CORNER LOCATION:

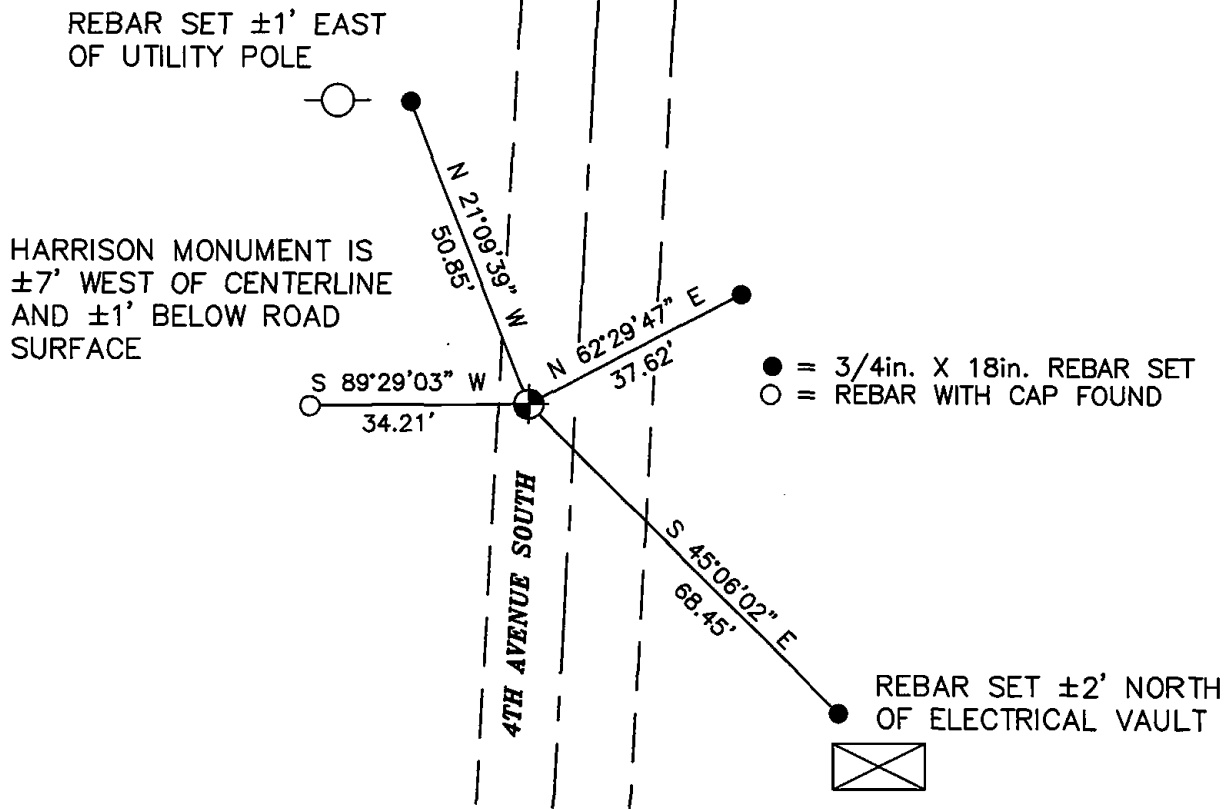
PRIOR TO ROAD CONSTRUCTION FOUND HARRISON MONUMENT AND RECORDED LOCATION.
 AFTER COMPLETION OF ROAD CONSTRUCTION SET 30in. HARRISON MONUMENT AND FOUR NEW WITNESS MONUMENTS.

OK 01-11-12 MS



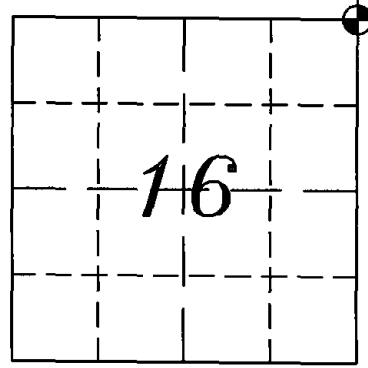
TIE SKETCH

SEE TIE SHEET 5-30-75
 DALE HAGEN



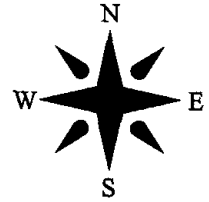
ADAMS COUNTY
 SURVEY MONUMENT RECORD

GOVERNMENT CORNER: NE CORNER SEC 16 T16N R7E
 TYPE OF MONUMENT: HARRISON
 STATE PLANE COORDINATES: N
E
 ELEVATION: _____
 FIELD BOOK: _____ PAGE _____



CORNER NO. 47

SECTION 16
 TOWN 16 NORTH
 RANGE 7 EAST
 NEW CHESTER
 CITY, VILLAGE, TOWN

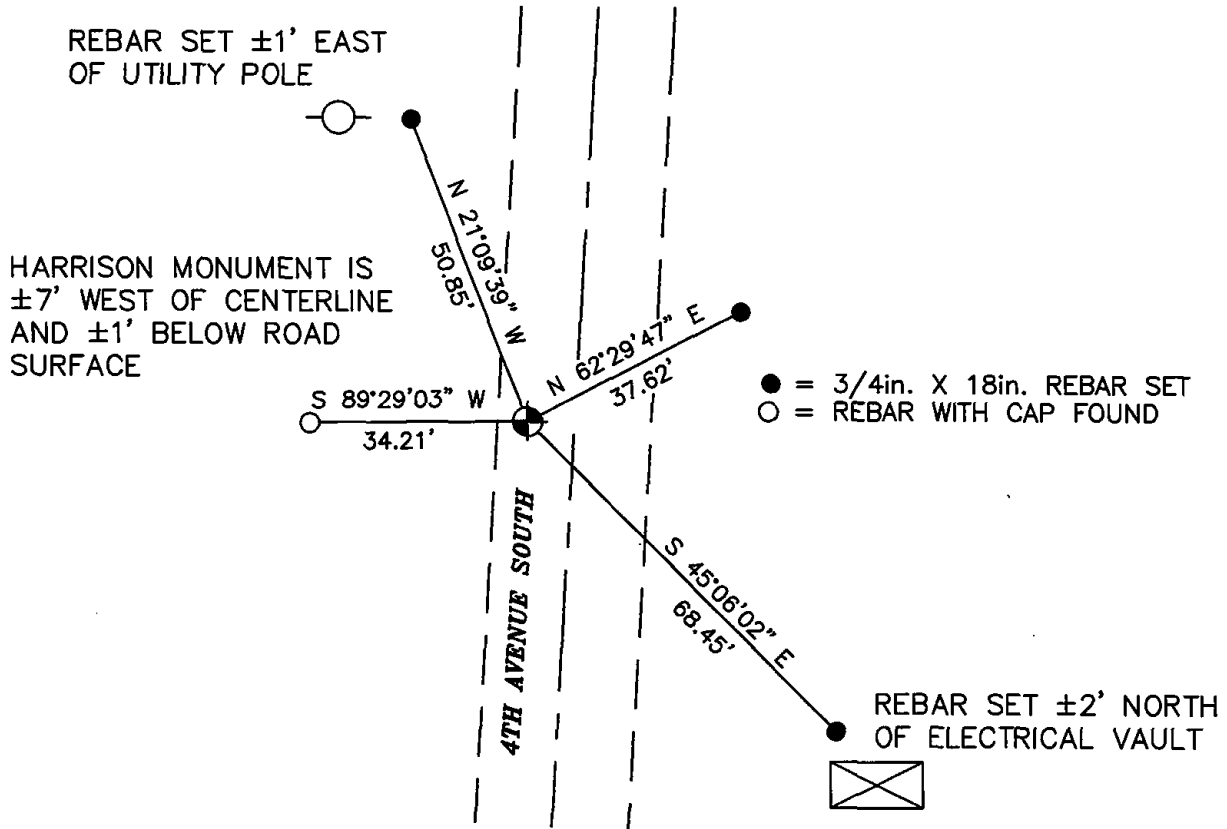


BASIS FOR CORNER LOCATION:

PRIOR TO ROAD CONSTRUCTION FOUND HARRISON MONUMENT AND RECORDED LOCATION.
 AFTER COMPLETION OF ROAD CONSTRUCTION SET 30in. HARRISON MONUMENT AND FOUR NEW WITNESS MONUMENTS.



TIE SKETCH



ADAMS COUNTY

Survey Monument Record

TYPE OF MONUMENT: Standard Harrison

STATE PLANE COORDINATES: N _____
E _____

ELEVATION — M.S.L. DATUM: _____

THETA ANGLE: _____

FIELD BOOK: _____ PAGE _____

BASIS FOR MONUMENT LOCATION

(Use reverse side if necessary)

Show info such as: History of corner, with reference to Vol. and pg. dates, surveyor; exact description of monument replaced; if location computed, by taped or EDM traverse; landowner remarks, etc.

Ran EDM/transit traverse around Sections 9 and 16 and to adjacent Section corners to determine search areas.

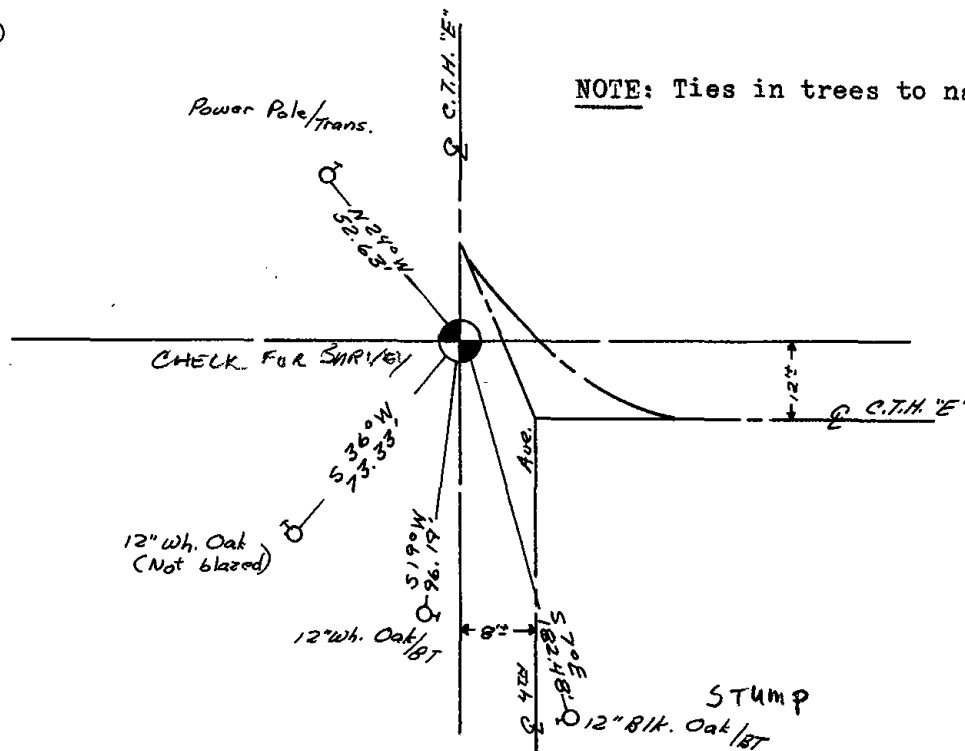
Excavation with backhoe yielded no evidence of the original corner or any subsequent remonumentation.

Set corner by double proportionate measure between adjacent government corners.

COR	OK	4-20-82	GR-SS
"	"	11-26-86	GR
"	"	12-30-91	GR-JG
"	"	12-6-96	SS
"	"	1-09-02	ML

TIE SKETCH 2-20-07-JG

(Show at least four ties)



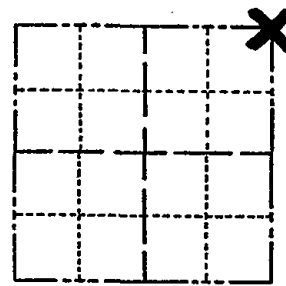
NOTE: Ties in trees to nail in di. c.

CORNER NO. 682 ⁽⁴⁷⁾

SECTION 16

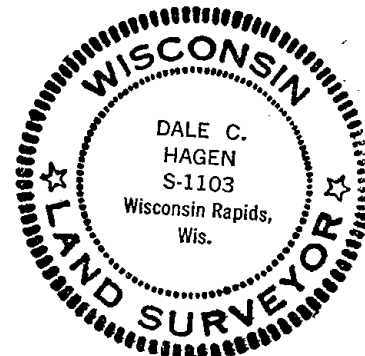
TOWN 16

RANGE 7



LOCATION
(Indicated by 'X')

SEAL:



CERTIFIED CORRECT:

Dale C. Hagen
Registered Land Surveyor
DATE: 5/30/75