

11
SECTION

16
TOWN

07
RANGE

ADAMS COUNTY

COUNTY CORNER NO: 50

ROMPORTOL ID: 41607110020

PUBLIC LAND SURVEY MONUMENT RECORD

TYPE OF MONUMENT: HARRISON
ADAMS COUNTY COORDINATES, NAD 83 (2007)

N. 185934.474

E. 581254.859

ELEVATION- DATUM

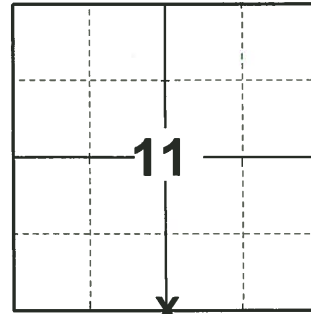
FIELD WORK DATE: 09/01/2020

BASIS FOR MONUMENT LOCATION

1976 - PLS 1103 RAN EDM/T2 TRAVERSE AROUND SECTIONS 1, 2, 11, AND 12, AND TO ADJACENT SECTIONS TO DETERMINE LOCATION OF SEARCH AREAS. EXCAVATION YIELDED NO EVIDENCE OF THE ORIGINAL CORNER, SUBSEQUENT REMONUMENTATION, OR ANY ACCESSORY MONUMENTS. RE-ESTABLISHED CORNER BY SINGLE PROPORTIONATE MEASURE ON LINE BETWEEN ADJACENT SECTION CORNERS. SET HARRISON MONUMENT.

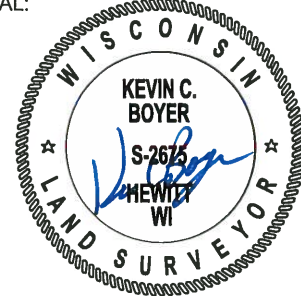
1978 - PLS 878 RETIE OF EXISTING MONUMENT.

2020 - PLS 2675 FOUND MAG NAIL IN THE ROAD SURFACE AND 1 TIE. REMOVED THE MAG NAIL AND FOUND HARRISON 6"± BELOW THE ROAD SURFACE. THE MONUMENT AGREES WITH THE EXISTING TIE. ACCEPTED THE HARRISON AS THE CORNER LOCATION. SET 4 NEW TIES AND MEASURED TO THE EXISTING TIE.



LOCATION
(INDICATE CORNER BY "X")

SEAL:



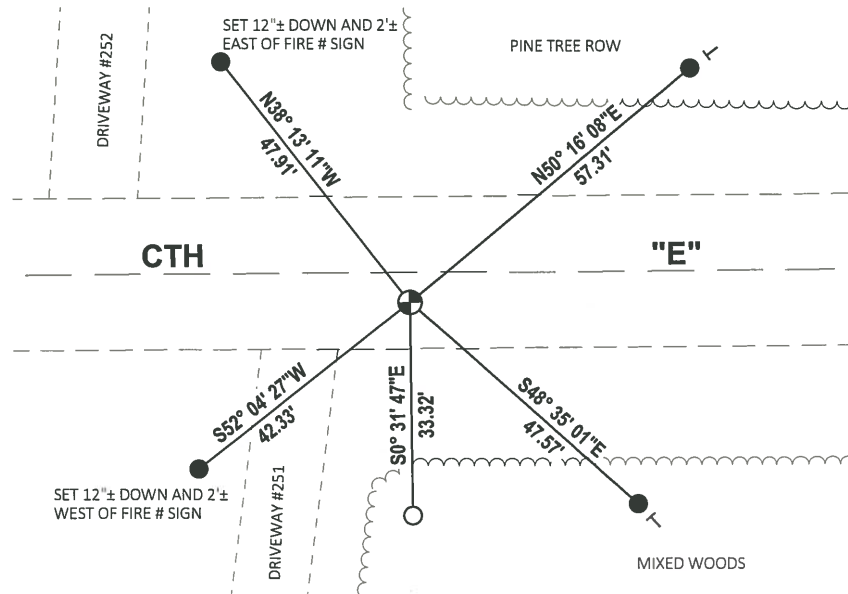
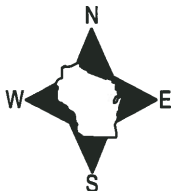
DATA SHOWN HERE ON THIS TIE SHEET IS CORRECT AND COMPLETE TO THE BEST OF MY KNOWLEDGE AND BELIEF.

PROFESSIONAL LAND SURVEYOR

DATE 11/3/2020

- TIE SKETCH

NOTE: THE CORNER LANDS 5'± SOUTH OF CTH "E" CENTERLINE.



- SET 3/4" x 18" IRON REBAR, 1.50#/FT
- FOUND 3/4" IRON ROD
- ⊕ FOUND HARRISON MONUMENT
- ┊ VINYL "T" POST

ADAMS COUNTY

Survey Monument Record

TYPE OF MONUMENT: Harrison

STATE PLANE COORDINATES: N _____

E _____

ELEVATION — M.S.L. DATUM: _____

THETA ANGLE: _____

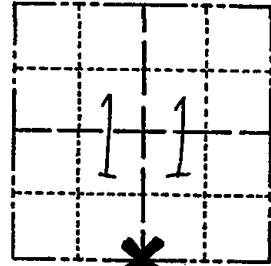
FIELD BOOK: 37 PAGE 59

CORNER NO. 50

SECTION 11

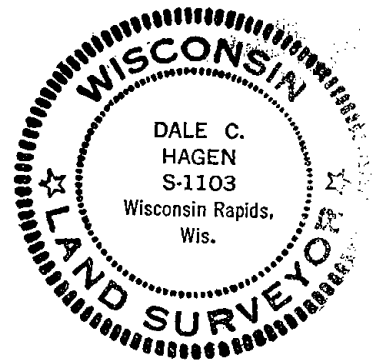
TOWN 16

RANGE 7



LOCATION
(Indicated by 'X')

SEAL:



BASIS FOR MONUMENT LOCATION

(Use reverse side if necessary)

Show info such as: History of corner, with reference to Vol. and pg, dates, surveyor; exact description of monument replaced; if location computed, by taped or EDM traverse; landowner remarks, etc.

Ran EDM/T2 traverse around Sections 1, 2, 11, and 12, and to adjacent sections to determine location of search areas.

Excavation yielded no evidence of the original corner, subsequent remonumentation, or any accessory monuments.

Re-established corner by single proportionate measure on line between adjacent section corners.

Set Harrison Monument on 7-9-76.

| | | | |
|--------|------|----------|-------|
| CORNER | O.K. | 2-24-77 | GRSS |
| | OK | 12-12-86 | GR |
| | " | 12-30-91 | GR-JG |
| | " | 12-10-96 | SS |

CERTIFIED CORRECT:

Dale C Hagen
Registered Land Surveyor

DATE: 11-30-76

1-NEW TIE 3-4-02-JG

2-NENTIES 01-11-12 MS

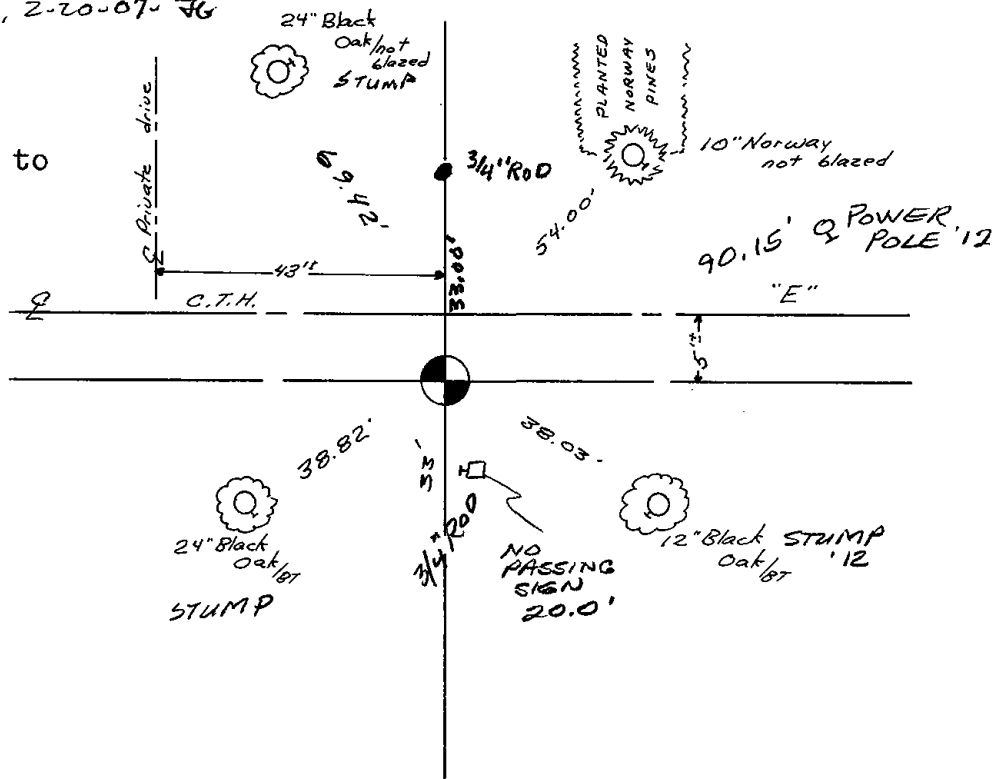
TIE SKETCH

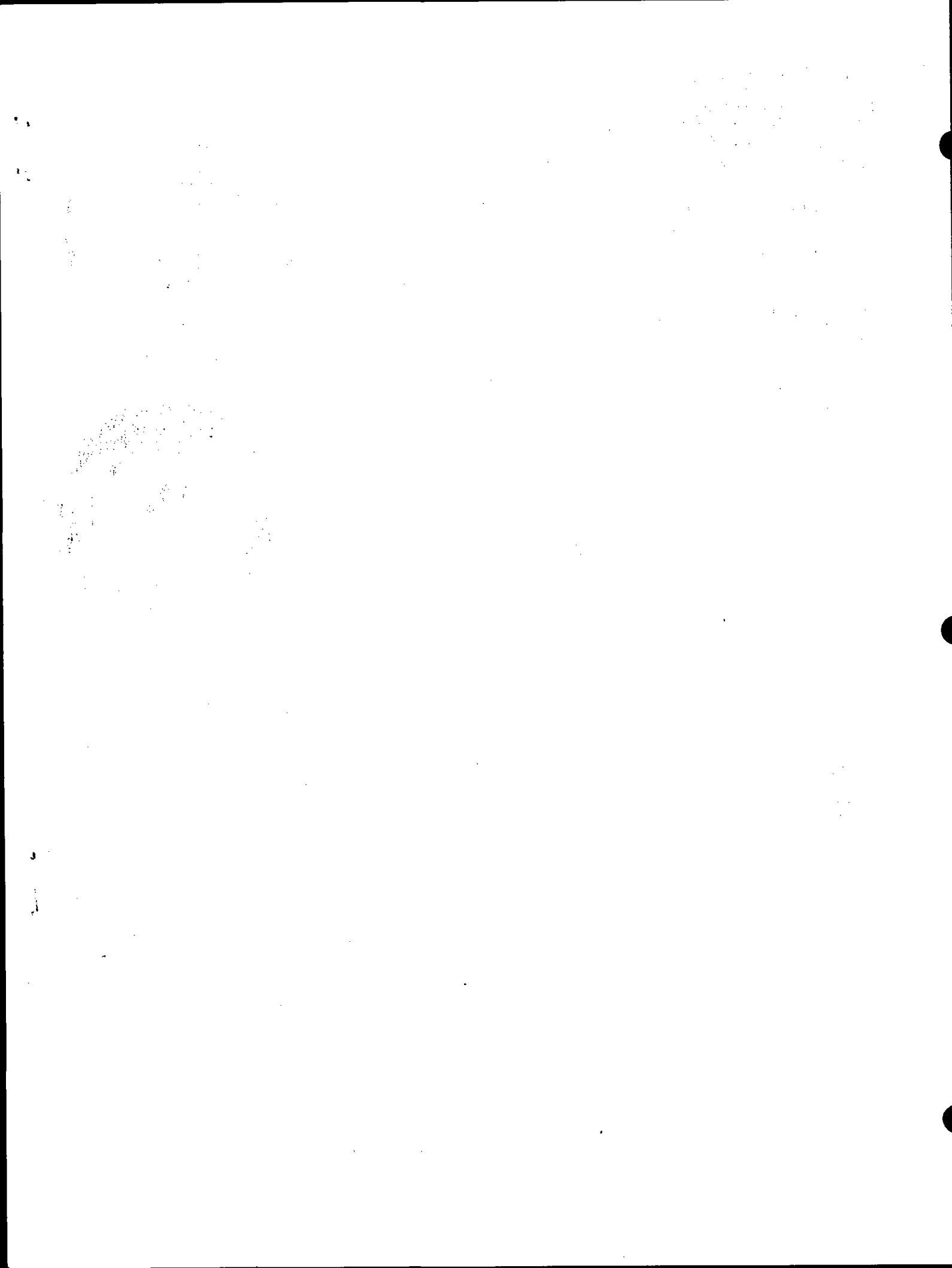
OK, 2-20-07-JG

(Show at least four ties)

NOTE

Ties in trees to nail in disc.

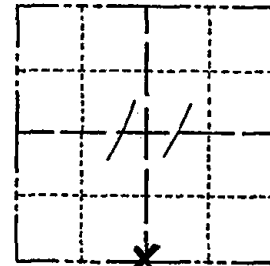




Government Land Corner Certificate

ADAMS County
 TYPE OF MONUMENT: HARRISON
 STATE PLANE COORDINATES: N _____
 E _____
 ELEVATION — M.S.L. DATUM: _____
 THETA ANGLE: _____
 FIELD BOOK: 57 PAGE 89
 DRAWN BY: J. S. KEDROWSKI

CORNER NO. 50
 SECTION 11
 TOWN 16 N.
 RANGE 7 E



LOCATION
(Indicated by 'X')

BASIS FOR MONUMENT LOCATION

Show info such as: History of corner, with reference to Vol. and pg., dates, surveyor; exact description of monument replaced; if location computed, by taped or EDM traverse; landowner remarks, etc. (Use reverse side if necessary)

*RETIE OF EXISTING
 MON.*

SEAL:

DATA SHOWN HERE ON
 CERTIFIED CORRECT:

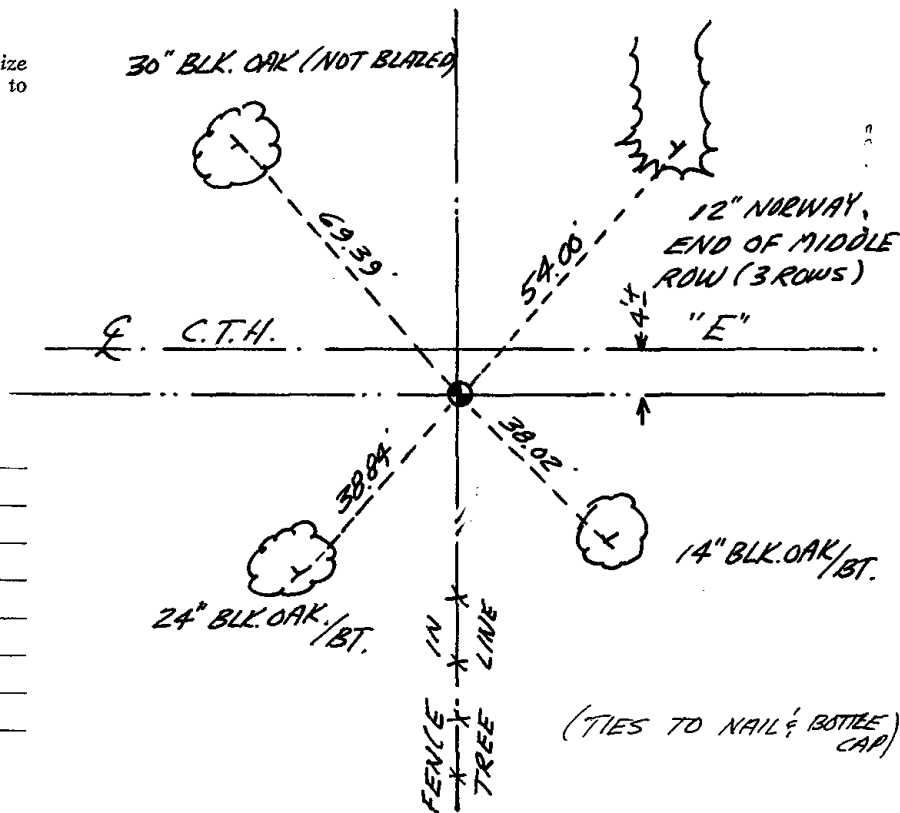
ABK
 Registered Land Surveyor

DATE: 12/22/78

COR OK 4-20-82 GR-SS

TIE SKETCH

Show at least four ties, also fence lines, roads, topo, size and type of witness trees' and if off road - best way to arrive at corner.



MAINTENANCE RECORD

| Date | Init. | Remarks |
|------|-------|---------|
| | | |
| | | |
| | | |
| | | |
| | | |
| | | |
| | | |

(TIES TO NAIL & BOTTLE CAP)