

12
SECTION

16
TOWN

07
RANGE

ADAMS COUNTY

COUNTY CORNER NO: 52

ROMPORTOL ID: 41607120020

PUBLIC LAND SURVEY MONUMENT RECORD

TYPE OF MONUMENT: HARRISON
ADAMS COUNTY COORDINATES, NAD 83 (2007)

N. 185948.784

E. 586538.283

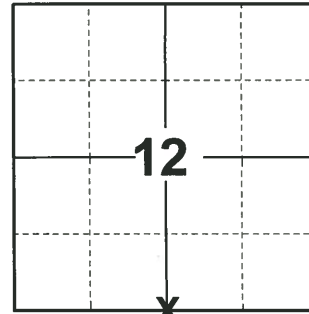
ELEVATION- _____ DATUM _____

FIELD WORK DATE: 09/01/2020

BASIS FOR MONUMENT LOCATION

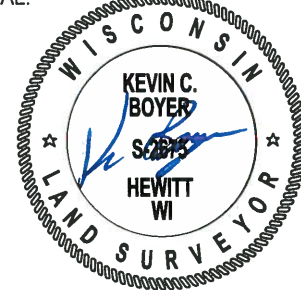
1977 - PLS 1103 RAN EDM/T2 TRAVERSE AROUND SECTIONS 1 AND 12 TO DETERMINE SEARCH AREAS FOR INVESTIGATION. EXCAVATION WITH BACKHOE YIELDED NO EVIDENCE OF THE ORIGINAL CORNER OR ANY REMONUMENTATION. RELOCATED CORNER BY SINGLE PROPORTIONATE MEASURE ON LINE BETWEEN ADJACENT SECTION CORNERS. SET HARRISON.

2020 - PLS 2675 FOUND MAG NAIL IN THE ROAD SURFACE AND 2 WITNESSES, REMOVED THE MAG NAIL AND FOUND HARRISON 8"± BELOW THE ROAD SURFACE. THE MONUMENT AGREES WITH BOTH WITNESSES. ACCEPTED THE HARRISON AS THE CORNER LOCATION. SET 4 NEW TIES AND MEASURED TO A NEARBY NGS MONUMENT AND TO THE EXISTING WITNESSES.



LOCATION
(INDICATE CORNER BY "X")

SEAL:



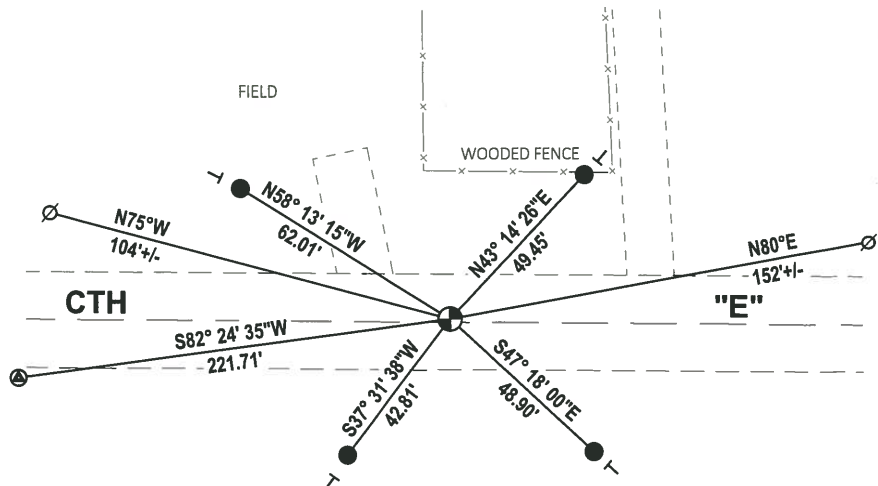
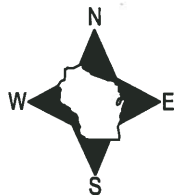
DATA SHOWN HERE ON THIS TIE SHEET IS CORRECT AND COMPLETE TO THE BEST OF MY KNOWLEDGE AND BELIEF.

PROFESSIONAL LAND SURVEYOR

DATE 11/3/2020

- TIE SKETCH

NOTE: THE CORNER LANDS 1± NORTH OF CTH "E" CENTERLINE.



- SET 3/4" x 18" IRON REBAR, 1.50#/FT
- ⊙ NGS MONUMENT
- ⊕ FOUND HARRISON MONUMENT
- ⊘ WITNESS POWER POLE
- ┌ VINYL "T" POST

FIELD

ADAMS COUNTY
Survey Monument Record

CORNER NO. 52
 SECTION 12
 TOWN 16
 RANGE 7

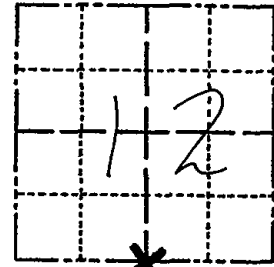
TYPE OF MONUMENT: Harrison

STATE PLANE COORDINATES: N _____
 E _____

ELEVATION — M.S.L. DATUM: _____

THETA ANGLE: _____

FIELD BOOK: 37 PAGE 58



LOCATION
 (Indicated by 'X')

SEAL:

BASIS FOR MONUMENT LOCATION

(Use reverse side if necessary)

Show info such as: History of corner, with reference to Vol. and pg, dates, surveyor; exact description of monument replaced; if location computed, by taped or EDM traverse; landowner remarks, etc.

Ran EDM/T2 traverse around Sections 1 and 12 to determine search areas for investigation.

Excavation with backhoe yielded no evidence of the original corner or any remonumentation.

Relocated corner by single proportionate measure on line between adjacent section corners.

Set Harrison on 7-8-76.



Co. OK 4-12-82 GR-SS
 OK 12-12-86 GR
 " 12-23-91 KZ-SS
 1-NEW TIE 1-09-02 ML-EE
 OK 2-20-07-JG
 OK 01-11-12 MS

CERTIFIED CORRECT:

Dale C Hagen
 Registered Land Surveyor

DATE: 5-31-77

TIE SKETCH

(Show at least four ties)

NOTE

Ties in trees to nail in disc.

