

PUBLIC LAND SURVEY MONUMENT RECORD

TYPE OF MONUMENT: HARRISON
 ADAMS COUNTY COORDINATES, NAD 83 (2007)

N. 183208.117

E. 568048.979

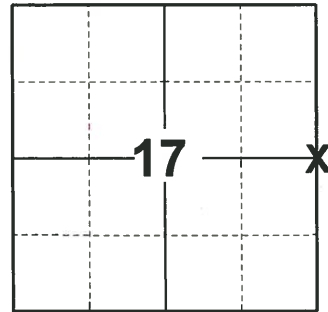
ELEVATION- DATUM

FIELD WORK DATE: 09/29/2020

BASIS FOR MONUMENT LOCATION

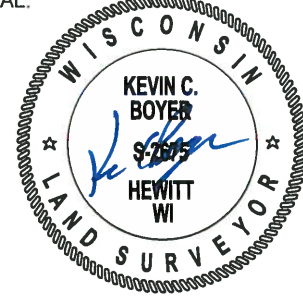
1975 - PLS 1103 RAN EDM/TRANSIT TRAVERSE AROUND SECTIONS 9 AND 16 AND TO ADJACENT SECTION CORNERS TO DETERMINE SEARCH AREAS. EXCAVATION WITH BACKHOE YIELDED NO EVIDENCE OF THE ORIGINAL CORNER OR ANY SUBSEQUENT REMONUMENTATION. SET CORNER EQUIDISTANT AND ONLINE BETWEEN ADJACENT SECTION CORNERS.

2020 - PLS 2675 FOUND HARRISON 48"± BELOW THE ROAD SURFACE AND DID NOT RECOVER ANY EXISTING TIES OR WITNESSES. VERIFIED CORNER TO BE ON A NEAR STRAIGHT LINE AND EQUIDISTANT BETWEEN THE SE AND NE CORNERS OF SECTION 17. ACCEPTED THE HARRISON AS THE BEST AVAILABLE EVIDENCE OF THE CORNER LOCATION AND SET 4 NEW TIES.



LOCATION
 (INDICATE CORNER BY "X")

SEAL:



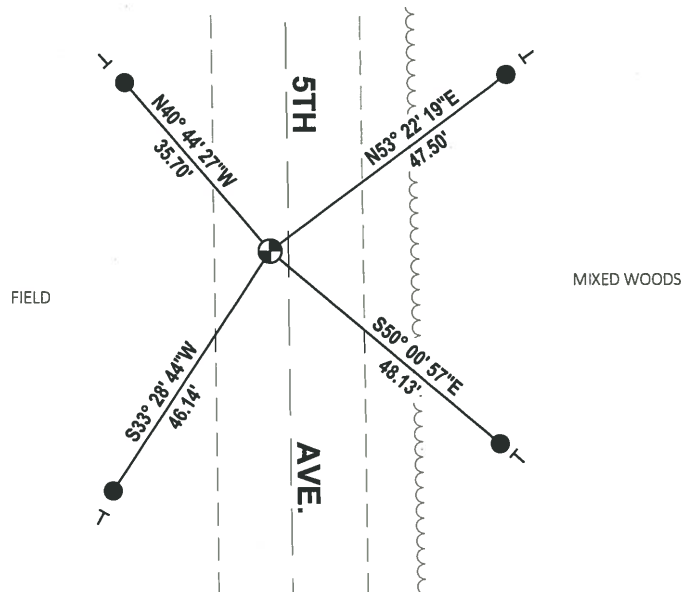
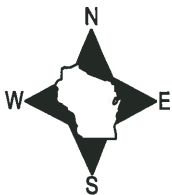
DATA SHOWN HERE ON THIS TIE SHEET IS CORRECT AND COMPLETE TO THE BEST OF MY KNOWLEDGE AND BELIEF.

PROFESSIONAL LAND SURVEYOR

DATE 11/3/2020

- TIE SKETCH

NOTE: THE CORNER LANDS 3± WEST OF 5TH AVE. CENTERLINE.



- SET 3/4" x 18" IRON REBAR, 1.50#/FT
- ⊕ FOUND HARRISON MONUMENT
- ┊ VINYL "T" POST

ADAMS COUNTY

Survey Monument Record

TYPE OF MONUMENT: Standard Harrison

STATE PLANE COORDINATES: N _____

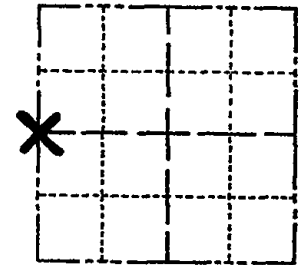
E _____

ELEVATION — M.S.L. DATUM: _____

THETA ANGLE: _____

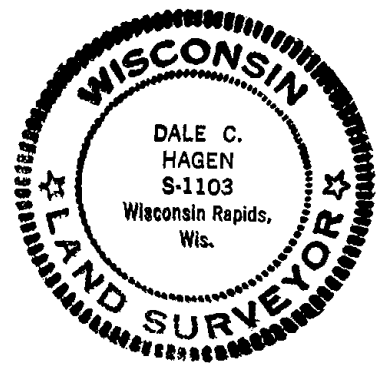
FIELD BOOK: _____ PAGE _____

CORNER NO. 684 ⁵⁶
 SECTION 16
 TOWN 16
 RANGE 7



LOCATION
(Indicated by 'X')

SEAL:



BASIS FOR MONUMENT LOCATION

(Use reverse side if necessary)

Show info such as: History of corner, with reference to Vol. and pg, dates, surveyor; exact description of monument replaced; if location computed, by taped or EDM traverse; landowner remarks, etc.

Ran EDM/transit traverse around Sections 9 and 16 and to adjacent section corners to determine search areas.

Excavation with backhoe yielded no evidence of the original corner or any subsequent remonumentation.

Set corner equidistant and on line between adjacent section corners.

CORNER	O.K.	3-28-77	GR-SS
"	"	3-22-82	"
"	"	11-26-86	GR
"	"	12-25-91	GR
"	"	1/6/97	JG-SS

CERTIFIED CORRECT
Dale C. Hagen
 Registered Land Surveyor
 DATE: 5/30/79

TIE SKETCH " 12-14-01 MK
 OK 5-15-07 JG
 (Show at least four ties) 01-23-12 OK MS

NOTE: Ties in trees to nail in disc.

