

17
SECTION

16
TOWN

07
RANGE

ADAMS COUNTY

COUNTY CORNER NO: 64
ROMPORTOL ID: 41607170020

PUBLIC LAND SURVEY MONUMENT RECORD

TYPE OF MONUMENT: HARRISON (BROKEN-TOP)
ADAMS COUNTY COORDINATES, NAD 83 (2007)

N. 180577.753

E. 565376.763

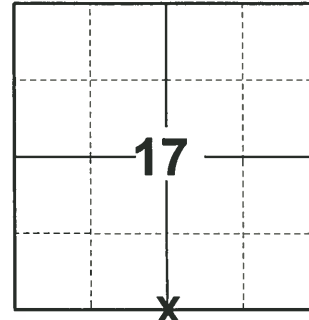
ELEVATION- DATUM

FIELD WORK DATE: 09/29/2020

BASIS FOR MONUMENT LOCATION

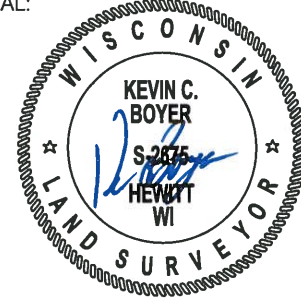
1979 - PLS 1478 SET MONUMENT AT ORIGINAL RECORD DISTANCE FROM THE NW CORNER OF SECTION 20 AND ON THE LINE BETWEEN THE NW AND NE CORNERS OF SECTION 20. THIS LOCATION BEST "FITS" THE POSSESSION AND FENCES THROUGHOUT THE SECTION. NO RECORD OF ANY MONUMENTATION SUBSEQUENT TO THE ORIGINAL WAS FOUND. EXCAVATION WITH BACKHOE YIELDED NO EVIDENCE OF ANY MONUMENTATION.

2020 - PLS 2675 FOUND HARRISON (BROKEN-TOP) 2'± BELOW THE ROAD SURFACE AND 1 WITNESS. THE MONUMENT AGREES WITH THE EXISTING WITNESS. ACCEPTED THE HARRISON (BROKEN-TOP) AS THE CORNER LOCATION. SET 4 NEW TIES AND MEASURED TO THE EXISTING WITNESS.



LOCATION
(INDICATE CORNER BY "X")

SEAL:



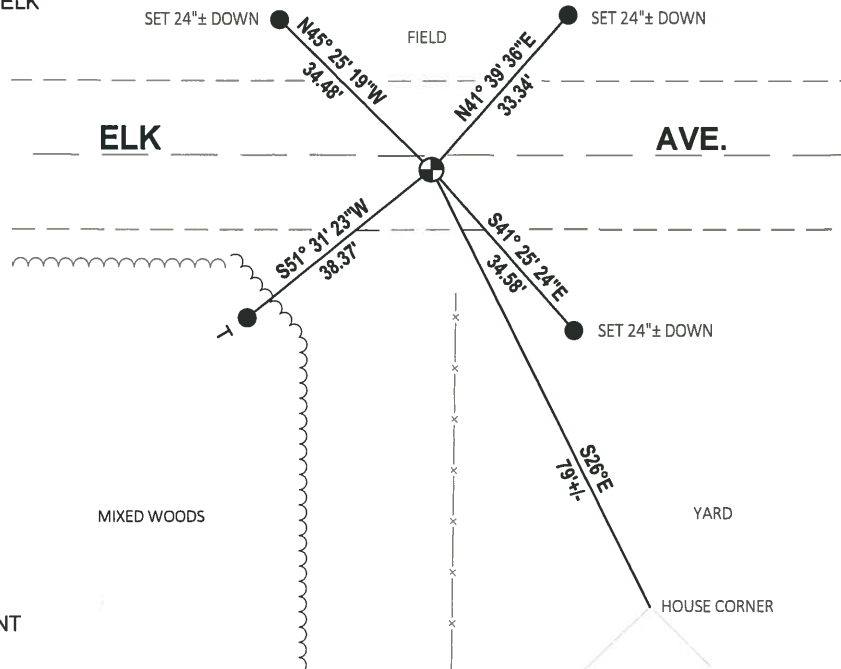
DATA SHOWN HERE ON THIS TIE SHEET IS CORRECT AND COMPLETE TO THE BEST OF MY KNOWLEDGE AND BELIEF.

PROFESSIONAL LAND SURVEYOR

DATE 11/3/2020

- TIE SKETCH

NOTE: THE CORNER LANDS 2'± SOUTH OF ELK AVE. CENTERLINE.



- SET 3/4" x 18" IRON REBAR, 1.50#/FT
- ⊕ FOUND HARRISON (BROKEN-TOP) MONUMENT
- └ VINYL "T" POST

Government Land Corner Certificate

Adams County

TYPE OF MONUMENT: Harrison

STATE PLANE COORDINATES: N _____
E _____

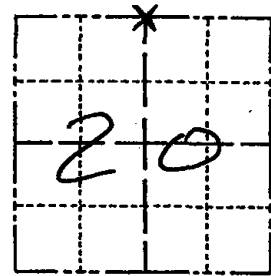
ELEVATION — M.S.L. DATUM: _____

THETA ANGLE: _____

FIELD BOOK: _____ PAGE _____

DRAWN BY: N.J.

CORNER NO. 64
SECTION 20
TOWN 16
RANGE 7



LOCATION
(Indicated by 'X')

SEAL:



DATA SHOWN HERE ON
CERTIFIED CORRECT:

Gregory P Rhinehart
Registered Land Surveyor

DATE: 11-5-79

BASIS FOR MONUMENT LOCATION

Show info such as: History of corner, with reference to Vol. and pg., dates, surveyor; exact description of monument replaced; if location computed, by taped or EDM traverse; landowner remarks, etc. (Use reverse side if necessary)

ORIGINAL

Set monument at record distance from the NW corner of section 20 and on the line between the NW and NE corners of section 20. This location best "fits" the possession and fences throughout the section. No record of any monumentation subsequent to the original was found. Excavation with backhoe yielded no evidence of any monumentation.

3-22-82	GR-SS	OK
11-26-86	GR	OK
12-26-91	KZ-GR	OK
12-6-96	SS	"
12-14-01	MH	OK
WNEW, 5-15-07-JG		

01-23-12 1 NEW TIE MS

TIE SKETCH

Show at least four ties, also fence lines, roads, topo, size and type of witness trees and if off road - best way to arrive at corner.

