

## PUBLIC LAND SURVEY MONUMENT RECORD

TYPE OF MONUMENT: HARRISON (BROKEN-TOP)  
 ADAMS COUNTY COORDINATES, NAD 83 (2007)

N. 180639.413

E. 573332.560

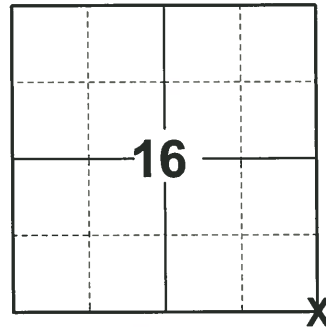
ELEVATION- \_\_\_\_\_ DATUM \_\_\_\_\_

FIELD WORK DATE: 09/28/2020

### BASIS FOR MONUMENT LOCATION

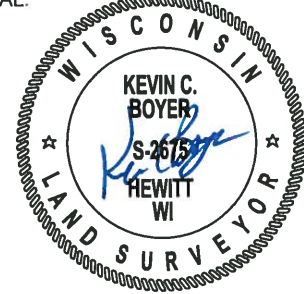
1975 - PLS 878 ACCEPTED AND MONUMENT PK NAIL SET BY SAM MULLEN AFTER TRAVERSING A MILE NORTH, EAST, AND WEST. THIS APPEARED TO MATCH EXISTING CONDITIONS MUCH BETTER THAN A PK NAIL APPARENTLY SET BY HOLZMILLER 14 FEET SOUTHWEST OF SAM MULLEN'S POINT. NO OTHER EVIDENCE OF THE CORNER AVAILABLE.

2020 - PLS 2675 FOUND HARRISON (BROKEN-TOP) 12"± BELOW THE ROAD SURFACE AND 3 WITNESSES. THE MONUMENT AGREES WITH ALL 3 WITNESSES. ACCEPTED THE HARRISON (BROKEN-TOP) AS THE CORNER LOCATION. SET 4 NEW TIES AND MEASURED TO THE EXISTING WITNESSES.



**LOCATION**  
 (INDICATE CORNER BY "X")

SEAL:



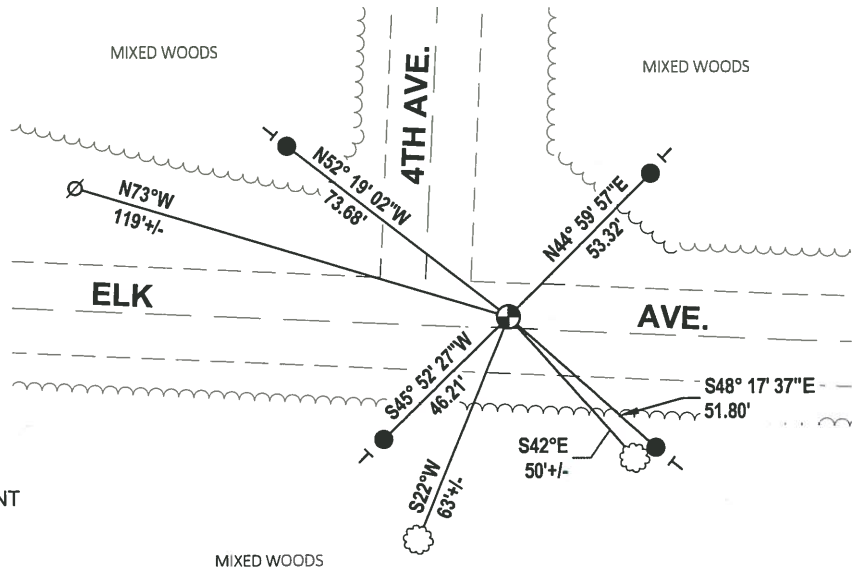
DATA SHOWN HERE ON THIS TIE SHEET IS CORRECT AND COMPLETE TO THE BEST OF MY KNOWLEDGE AND BELIEF.

PROFESSIONAL LAND SURVEYOR

DATE 11/3/2020

### - TIE SKETCH

NOTE: THE CORNER LANDS 3'± NORTH OF ELK AVE. CENTERLINE.



- SET 3/4" x 18" IRON REBAR, 1.50#/FT
- ⊕ FOUND HARRISON (BROKEN-TOP) MONUMENT
- ∅ WITNESS POWER POLE
- VINYL "T" POST
- ☼ WITNESS TREE

# ADAMS COUNTY

## Survey Monument Record

TYPE OF MONUMENT: Harrison Standard

STATE PLANE COORDINATES: N \_\_\_\_\_  
E \_\_\_\_\_

ELEVATION — M.S.L. DATUM: \_\_\_\_\_

THETA ANGLE: \_\_\_\_\_

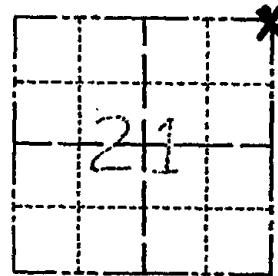
FIELD BOOK: \_\_\_\_\_ PAGE \_\_\_\_\_

CORNER NO. 652 <sup>(67)</sup>

SECTION 21

TOWN 16

RANGE 7E



LOCATION  
(Indicated by 'X')

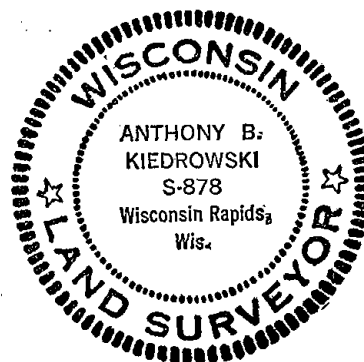
SEAL:

### BASIS FOR MONUMENT LOCATION

(Use reverse side if necessary)

Show info such as: History of corner, with reference to Vol. and pg, dates, surveyor; exact description of monument replaced; if location computed, by taped or EDM traverse; landowner remarks, etc.

Accepted and monumented PK nail set by Sam Mullen after traversing a mile north, east and west. This appeared to match existing conditions much better than a PK nail apparently set by Holzmillier 14 feet southwest of Sam Mullen's point. No other evidence of the corner available.



CORNER	O.K.	3-28-77	GR-SS
"	"	4-13-82	"
"	"	11-26-86	GR
"	"	11-29-91	GR
Z	NEW TIES	1-6-97	JG-SS
	OK	12-28-01	ML
	OK	5-15-07	JG

CERTIFIED CORRECT:

*Anthony B. Kiedrowski*  
Registered Land Surveyor

DATE: 4/14/75

### TIE SKETCH OK 01-20-12 MS

(Show at least four ties)

