

PUBLIC LAND SURVEY MONUMENT RECORD

TYPE OF MONUMENT: HARRISON
 ADAMS COUNTY COORDINATES, NAD 83 (2007)

N. 180636.158

E. 578603.994

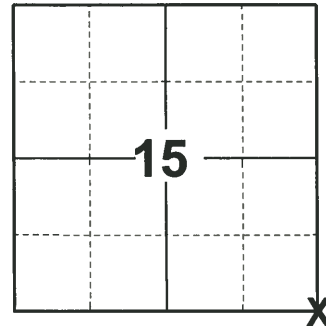
ELEVATION- _____ DATUM _____

FIELD WORK DATE: 09/21/2020

BASIS FOR MONUMENT LOCATION

1977 - PLS 878 EXCAVATED WITH BACKHOE, FOUND NOTHING. NO RESURVEYS ON RECORD. THIS CORNER ESTABLISHED BY THE DOUBLE PROPORTIONATE METHOD FROM CORNERS PREVIOUSLY ESTABLISHED ONE MILE NORTH, SOUTH, AND WEST OF HERE, AND THE STONE FOUND 1/2 MILE EAST OF HERE.

2020 - PLS 2675 FOUND HARRISON 6"± BELOW THE ROAD SURFACE AND DID NOT RECOVER ANY EXISTING TIES OR WITNESSES. ACCEPTED THE HARRISON AS THE BEST AVAILABLE EVIDENCE OF THE CORNER LOCATION. SET 3 NEW TIES AND MEASURED TO A FOUND RIGHT-OF-WAY IRON.



LOCATION
 (INDICATE CORNER BY "X")

SEAL:



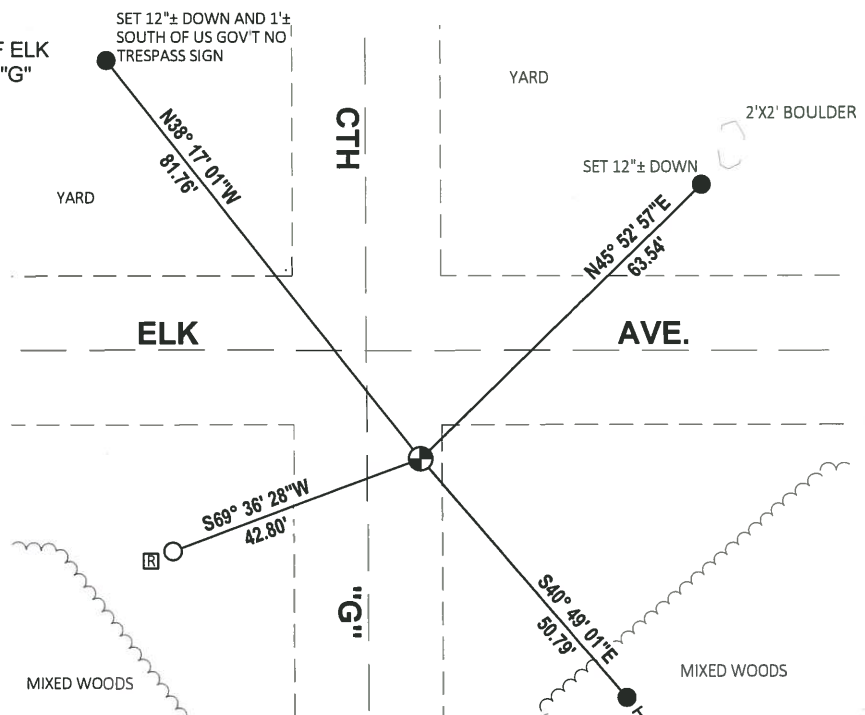
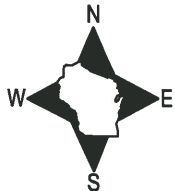
DATA SHOWN HERE ON THIS TIE SHEET IS CORRECT AND COMPLETE TO THE BEST OF MY KNOWLEDGE AND BELIEF.

PROFESSIONAL LAND SURVEYOR

DATE 11/3/2020

- TIE SKETCH

NOTE: THE CORNER LANDS 18'± SOUTH OF ELK AVE. CENTERLINE AND 8.4'± EAST OF CTH "G" CENTERLINE.

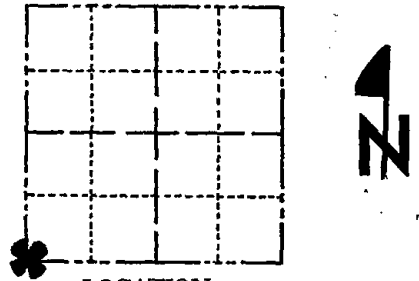


- SET 3/4" x 18" IRON REBAR, 1.50#/FT
- FOUND 3/4" IRON ROD
- ⊕ FOUND HARRISON MONUMENT
- VINYL "T" POST
- ⊠ RIGHT-OF-WAY GUARD POST

Government Land Corner Certificate

ADAMS County
 TYPE OF MONUMENT: Harrison Set 10/22/79
 STATE PLANE COORDINATES: N _____
 E _____
 ELEVATION — M.S.L. DATUM: _____
 THETA ANGLE: _____
 FIELD BOOK: 57 PAGE 49
 DRAWN BY: SCOTT SORENSEN

CORNER NO. 69
 SECTION 14
 TOWN 16
 RANGE 7



LOCATION
(Indicated by 'X')

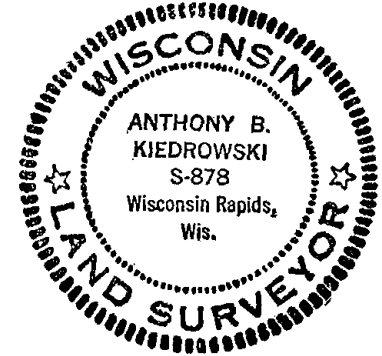
BASIS FOR MONUMENT LOCATION

Show info such as: History of corner, with reference to Vol. and pg., dates, surveyor; exact description of monument replaced; if location computed, by taped or EDM traverse; landowner remarks, etc. (Use reverse side if necessary)

Excavated with backhoe, found nothing.
 No resurveys on record. This corner established by the double proportionate method from corners previously established one mile north, south, and west of here, and the stone found 1/2 mile east of here.

4-13-82 GR-SS OK
 12-12-86 GR
 2-NEW, COR OK 12-30-91 GR-IG

SEAL:



DATA SHOWN HERE ON
 CERTIFIED CORRECT:

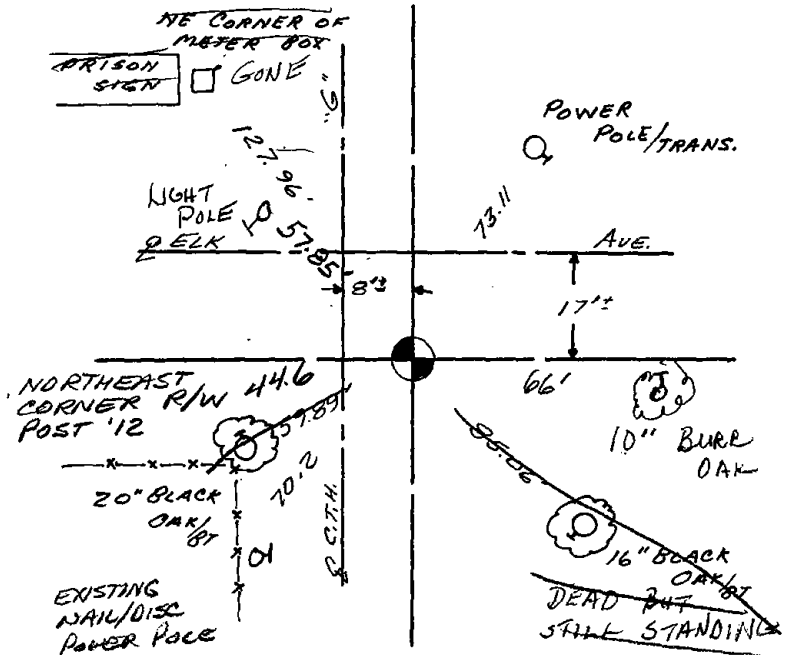
Anthony B. Kiedrowski
 Registered Land Surveyor

DATE: 12/8/77

TIE SKETCH

Show at least four ties, also fence lines, roads, topo, size and type of witness trees and if off road - best way to arrive at corner.

Ties to nail and disc.



MAINTENANCE RECORD

Date	Init.	Remarks
4-13-82	GR-SS	O.K.
12-9-86	SS	1 NEW
SEE ATTACHED SHEET MC + BF, 9-2-99		
12-29-01	ML	OK
2-20-07	JG	OK
01-20-12	MS	1 NEW TIE