

14 SECTION 16 TOWN 07 RANGE

ADAMS COUNTY

COUNTY CORNER NO: 70
ROMPORTOL ID: 41607140020

PUBLIC LAND SURVEY MONUMENT RECORD

TYPE OF MONUMENT: HARRISON (BROKEN-TOP)
ADAMS COUNTY COORDINATES, NAD 83 (2007)

N. 180650.564

E. 581229.048

ELEVATION- DATUM

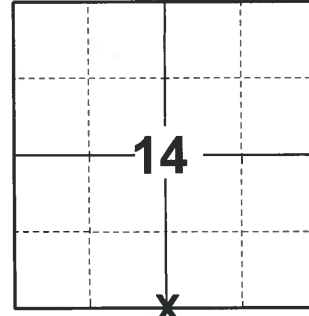
FIELD WORK DATE: 09/21/2020

BASIS FOR MONUMENT LOCATION

1977 - PLS 878 EXCAVATED WITH BACKHOE. FOUND 6X10X12" BLACK GRANITE STONE SET UPRIGHT. LOWERED STONE AND SET HARRISON MONUMENT ON TOP.

2020 - PLS 2675 FOUND 3/4" REBAR BENT IN THE ROAD SURFACE, REMOVED AND FOUND HARRISON (BROKEN-TOP) 24"± BELOW THE ROAD SURFACE. DID NOT RECOVER ANY EXISTING TIES OR WITNESSES. ACCEPTED THE HARRISON (BROKEN-TOP) AS THE BEST AVAILABLE EVIDENCE OF THE CORNER LOCATION AND SET 4 NEW TIES.

NOTE: ELK AVE IS CLOSED AND UNDER 12"-24" OF WATER.



LOCATION
(INDICATE CORNER BY "X")

SEAL:



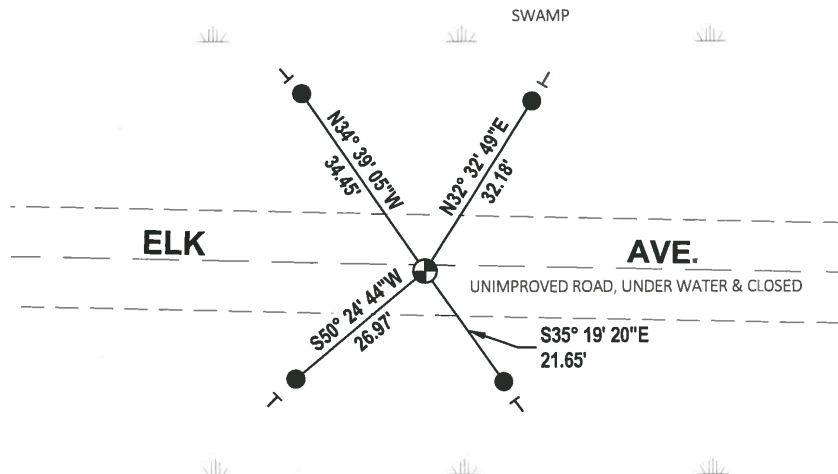
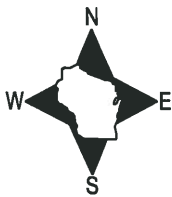
DATA SHOWN HERE ON THIS TIE SHEET IS CORRECT AND COMPLETE TO THE BEST OF MY KNOWLEDGE AND BELIEF.

PROFESSIONAL LAND SURVEYOR

DATE 11/3/2020

- TIE SKETCH

NOTE: THE CORNER LANDS 1'± SOUTH OF ELK AVE. CENTERLINE.



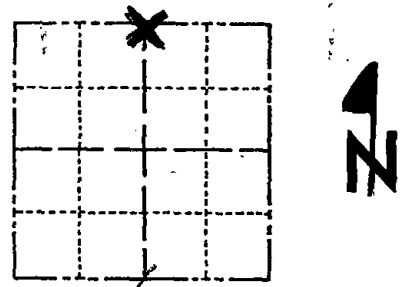
- SET 3/4" x 48" IRON REBAR, 1.50#/FT
- ⊕ FOUND HARRISON (BROKEN-TOP) MONUMENT
- ┌ VINYL "T" POST

SWAMP

Government Land Corner Certificate

Adams County
 TYPE OF MONUMENT: _____
 STATE PLANE COORDINATES: N _____
 E _____
 ELEVATION — M.S.L. DATUM: _____
 THETA ANGLE: _____
 FIELD BOOK: 101 PAGE 106
 DRAWN BY: A.B.K.

CORNER NO. 70
 SECTION 23
 TOWN 16
 RANGE 7



LOCATION
 (Indicated by 'X')

BASIS FOR MONUMENT LOCATION

Show info such as: History of corner, with reference to Vol. and pg., dates, surveyor; exact description of monument replaced; if location computed, by taped or EDM traverse; landowner remarks, etc. (Use reverse side if necessary)

Excavated with backhoe. Found 6 x 10 x 12" black granite stone set upright. Lowered stone and set Harrison Monument on top.

4-13-82 GR-SS OK
 12-12-86 OK CR
 FOR OK, NOTHING AVAILABLE 12-30-91 GR-SG

SEAL:



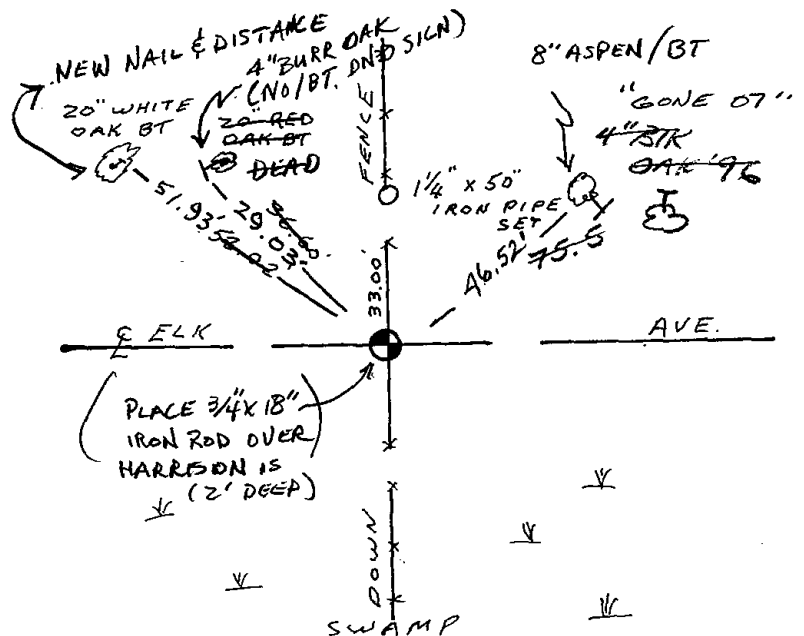
DATA SHOWN HERE ON CERTIFIED CORRECT:

Anthony B. Kiedrowski
 Registered Land Surveyor

DATE: 9/14/77

TIE SKETCH

Show at least four ties, also fence lines, roads, topo, size and type of witness trees' and if off road - best way to arrive at corner.



MAINTENANCE RECORD

| Date | Init. | Remarks |
|----------|-------|---------------|
| 4-13-82 | GR-SS | O.K. |
| 12-11-96 | JG-SS | 1 NEW TIE |
| 1-02-02 | ML | OK |
| 5-15-07 | JG | 1-GONE, 3-NEW |
| 01-23-12 | MS | OK |