

## PUBLIC LAND SURVEY MONUMENT RECORD

TYPE OF MONUMENT: HARRISON  
 ADAMS COUNTY COORDINATES, NAD 83 (2007)

N. 177994.393

E. 578586.172

ELEVATION-        DATUM       

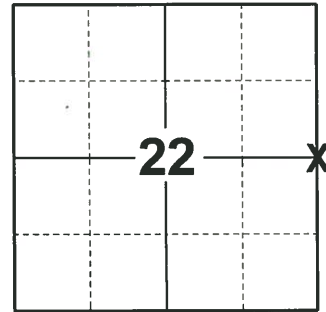
FIELD WORK DATE: 10/01/2020

### BASIS FOR MONUMENT LOCATION

1977 - PLS 878 NO RESURVEYS ON RECORD. SEARCHED AREA FOR EVIDENCE OF CORNER BUT FOUND NONE. THIS CORNER SET ON LINE EQUIDISTANT BETWEEN SECTION CORNERS.

1999 - PLS 2021 RESET HARRISON MONUMENT, FOUND FLAT IN DITCH. MADE 4 NEW TIES.

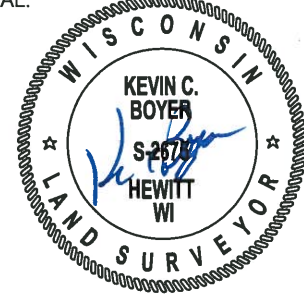
2020 - PLS 2675 FOUND HARRISON IN 4.5'± OF WATER AND DID NOT LOOK FOR ANY EXISTING TIES SINCE AREA IS UNDERWATER. CORNER WAS VERIFIED TO BE ON A NEAR STRAIGHT LINE AND EQUIDISTANT BETWEEN THE NE AND SE CORNERS OF SECTION 22. ACCEPTED THE HARRISON AS THE CORNER LOCATION AND SET 4 NEW TIES.



**LOCATION**

(INDICATE CORNER BY "X")

SEAL:



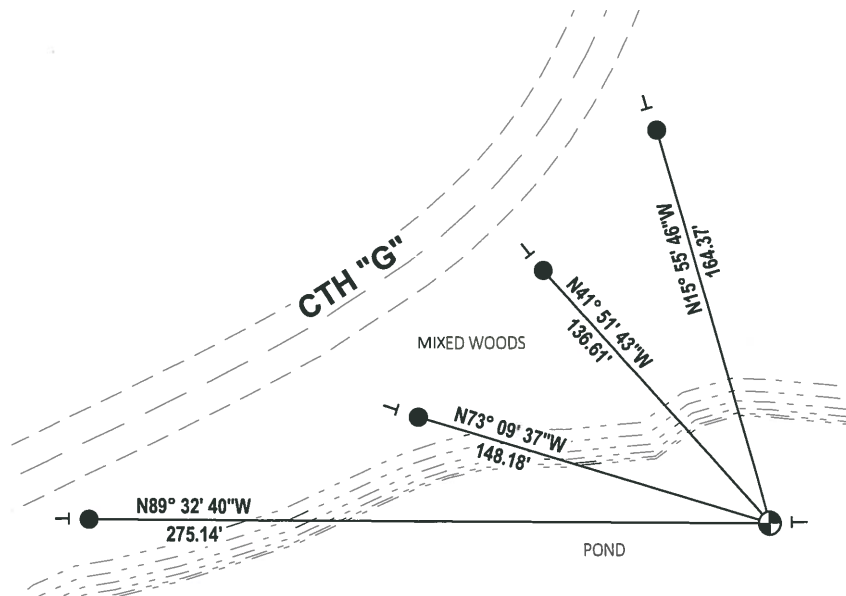
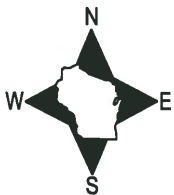
DATA SHOWN HERE ON THIS TIE SHEET IS CORRECT AND COMPLETE TO THE BEST OF MY KNOWLEDGE AND BELIEF.

PROFESSIONAL LAND SURVEYOR

DATE 11/3/2020

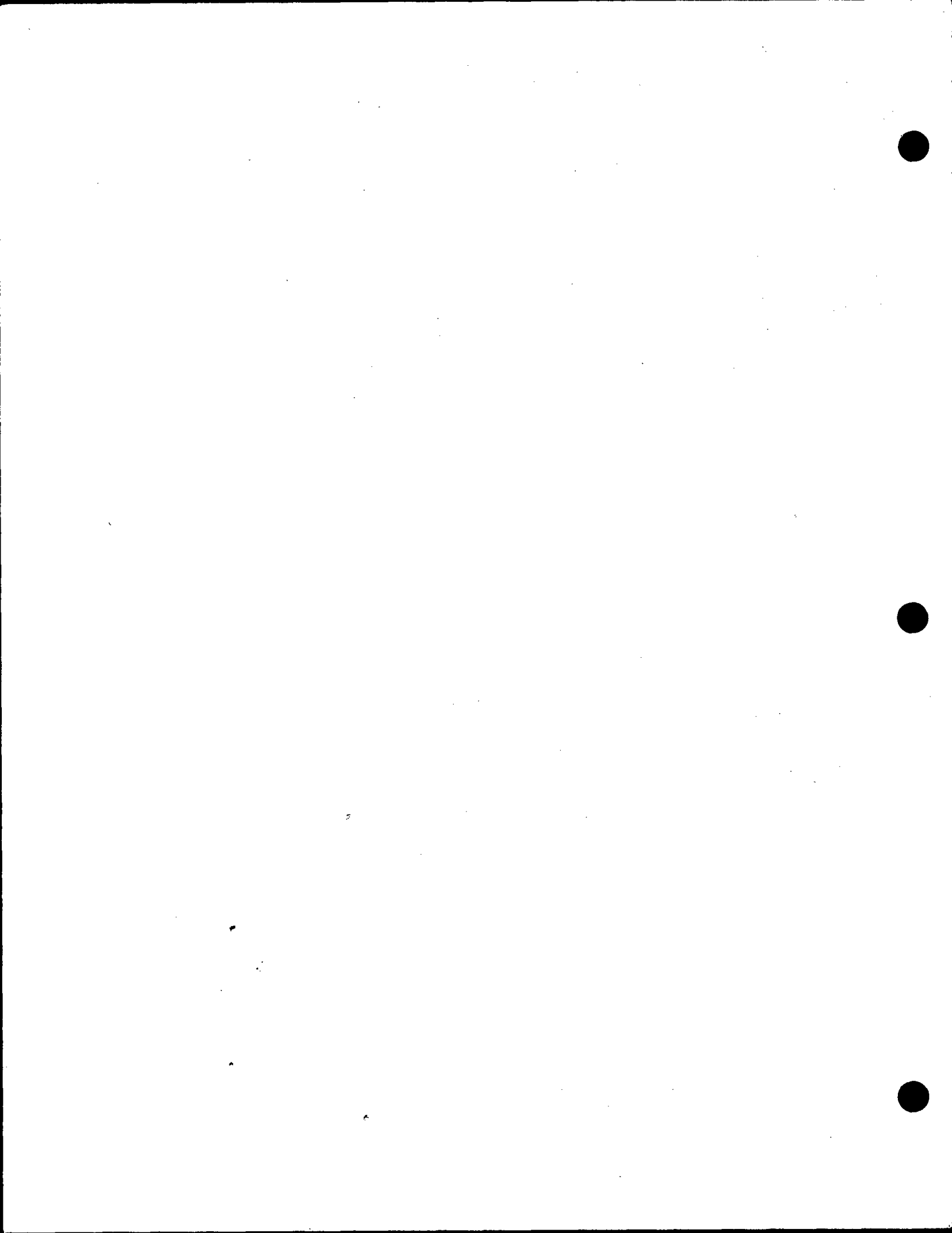
### TIE SKETCH

NOTE: THE CORNER LANDS 60'± INTO THE POND.



- SET 3/4" x 18" IRON REBAR, 1.50#/FT
- ⊕ FOUND HARRISON MONUMENT
- VINYL "T" POST

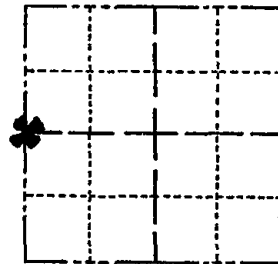




# Government Land Corner Certificate

ADAMS County  
 TYPE OF MONUMENT: HARRISON STD.  
 STATE PLANE COORDINATES: N \_\_\_\_\_  
 E \_\_\_\_\_  
 ELEVATION — M.S.L. DATUM: \_\_\_\_\_  
 THETA ANGLE: \_\_\_\_\_  
 FIELD BOOK: 57 PAGE 50  
 DRAWN BY: SCOTT SORENSEN

CORNER NO. 78  
 SECTION 23  
 TOWN 16  
 RANGE 7



LOCATION  
(Indicated by 'X')

## BASIS FOR MONUMENT LOCATION

Show info such as: History of corner, with reference to Vol. and pg., dates, surveyor; exact description of monument replaced; if location computed, by taped or EDM traverse; landowner remarks, etc. (Use reverse side if necessary)

No resurveys on record. Searched area for evidence of corner but found none. This corner set on line equidistant between section corners.

SEAL:



DATA SHOWN HERE ON  
CERTIFIED CORRECT:

*Anthony B. Kiedrowski*  
Registered Land Surveyor

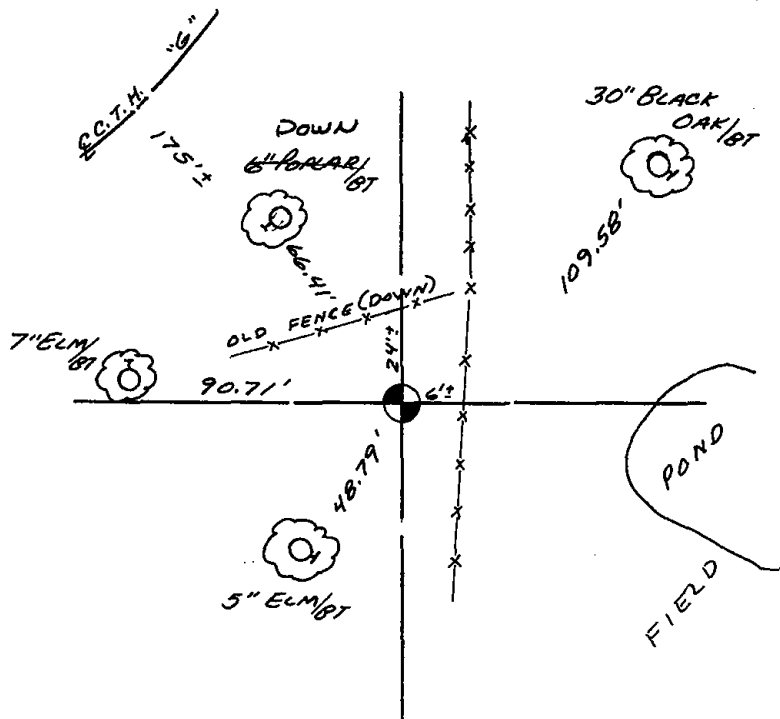
DATE: 12/8/77

COR. OK - SEE SURVEY  
 1-13-82 GR-55  
 12-12-86 GR-02

## TIE SKETCH

Show at least four ties, also fence lines, roads, topo, size and type of witness trees and if off road - best way to arrive at corner.

Ties to nail and disc.



## MAINTENANCE RECORD

Date	Init.	Remarks