

## PUBLIC LAND SURVEY MONUMENT RECORD

TYPE OF MONUMENT: HARRISON  
 ADAMS COUNTY COORDINATES, NAD 83 (2007)

N. 175291.217

E. 560084.941

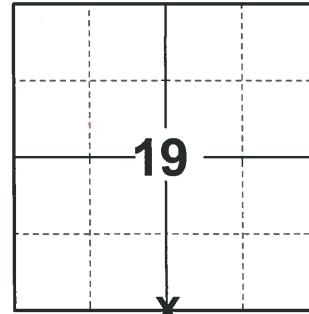
ELEVATION- \_\_\_\_\_ DATUM \_\_\_\_\_

FIELD WORK DATE: 10/05/2020

### BASIS FOR MONUMENT LOCATION

1974 - PLS 776 TIES ARE TO 20# SPIKES. AREA MACHINE EXCAVATED-NOTHING FOUND. DISTANCES CHECKED BY EDM. TIE MEASUREMENTS ARE HORIZONTAL.

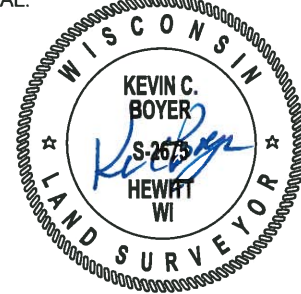
2020 - PLS 2675 FOUND 3/4"X24" REBAR IN THE ROAD SURFACE, REMOVED 3/4"X24" AND FOUND HARRISON 18"± BELOW THE ROAD SURFACE AND 1 TIE. THE MONUMENT AGREES WITH THE EXISTING TIE. ACCEPTED THE HARRISON AS THE CORNER LOCATION. SET 3 NEW TIES AND MEASURED TO THE EXISTING TIE.



**LOCATION**

(INDICATE CORNER BY "X")

SEAL:



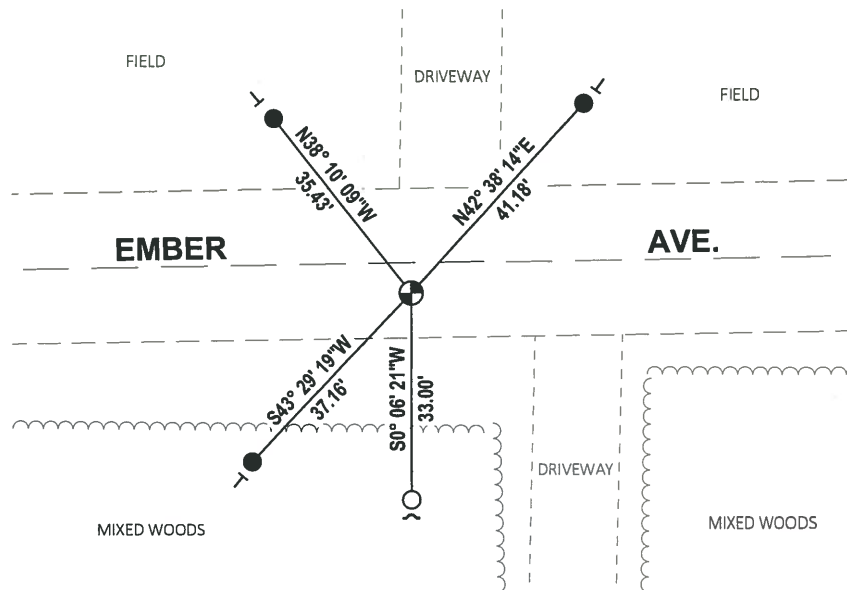
DATA SHOWN HERE ON THIS TIE SHEET IS CORRECT AND COMPLETE TO THE BEST OF MY KNOWLEDGE AND BELIEF.

PROFESSIONAL LAND SURVEYOR

DATE 11/3/2020

### TIE SKETCH

NOTE: THE CORNER LANDS 5'± SOUTH OF EMBER AVE. CENTERLINE.



- SET 3/4" x 18" IRON REBAR, 1.50#/FT
- FOUND 3/4" IRON ROD
- ⊕ FOUND HARRISON MONUMENT
- ✓ STEEL FENCE POST
- ┌ VINYL "T" POST

# ADAMS COUNTY

## Survey Monument Record

TYPE OF MONUMENT: HARRISON

STATE PLANE COORDINATES: N \_\_\_\_\_

E \_\_\_\_\_

ELEVATION — M.S.L. DATUM: \_\_\_\_\_

THETA ANGLE: \_\_\_\_\_

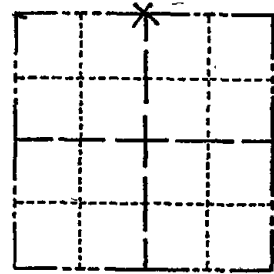
FIELD BOOK: ADAMS PAGE FILE

CORNER NO. 533

SECTION 30

TOWN 16

RANGE 7



LOCATION  
(Indicated by 'X')

SEAL:



### BASIS FOR MONUMENT LOCATION

(Use reverse side if necessary)

Show info such as: History of corner, with reference to Vol. and pg, dates, surveyor; exact description of monument replaced; if location computed, by taped or EDM traverse; landowner remarks, etc.

TIES ARE TO 20<sup>th</sup> SPIKES

AREA MACHINE EXCAVATED - NOTHING FOUND

DISTANCES CHECKED BY E.D.M.

TIE MEASUREMENTS ARE HORIZONTAL

CORNER	O.K.	3-8-77	GR-SS
"	"	3-22-82	"
"	"	12-9-86	"
1 GONE	"	12-26-91	KZ-GR
1 NEW TIE		1-6-97	JS-SS
	OK	1-03-02	ML
MON & 2 TIES		1-30-07	JB-SS
1 NEW TIE		01-18-12	MS

CERTIFIED CORRECT:

Herman S. Holzmiller  
Registered Land Surveyor 5-776

DATE: 12-16-74

### TIE SKETCH

(Show at least four ties)

