

19
SECTION

16
TOWN

07
RANGE

ADAMS COUNTY

COUNTY CORNER NO: 83

ROMPORTOL ID: 41607190000

PUBLIC LAND SURVEY MONUMENT RECORD

TYPE OF MONUMENT: HARRISON
ADAMS COUNTY COORDINATES, NAD 83 (2007)

N. 175311.077

E. 562737.538

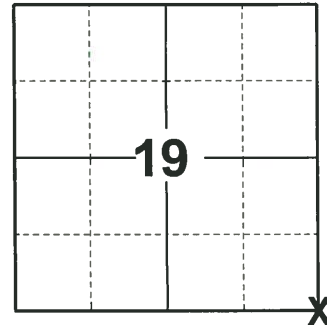
ELEVATION- DATUM

FIELD WORK DATE: 10/05/2020

BASIS FOR MONUMENT LOCATION

1974 - PLS 878 EXCAVATED WITH BACKHOE-FOUND NOTHING. LOCATION SET BY ANALYSIS OF TRAVERSE OF SECTION.

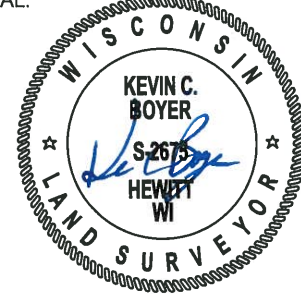
2020 - PLS 2675 FOUND MAG NAIL IN THE ROAD SURFACE, REMOVED AND FOUND HARRISON 8"± BELOW THE ROAD SURFACE AND 3 WITNESSES. THE MONUMENT AGREES WITH ALL 3 WITNESSES. ACCEPTED THE HARRISON AS THE CORNER LOCATION. SET 4 NEW TIES AND MEASURED TO THE EXISTING WITNESSES.



LOCATION

(INDICATE CORNER BY "X")

SEAL:



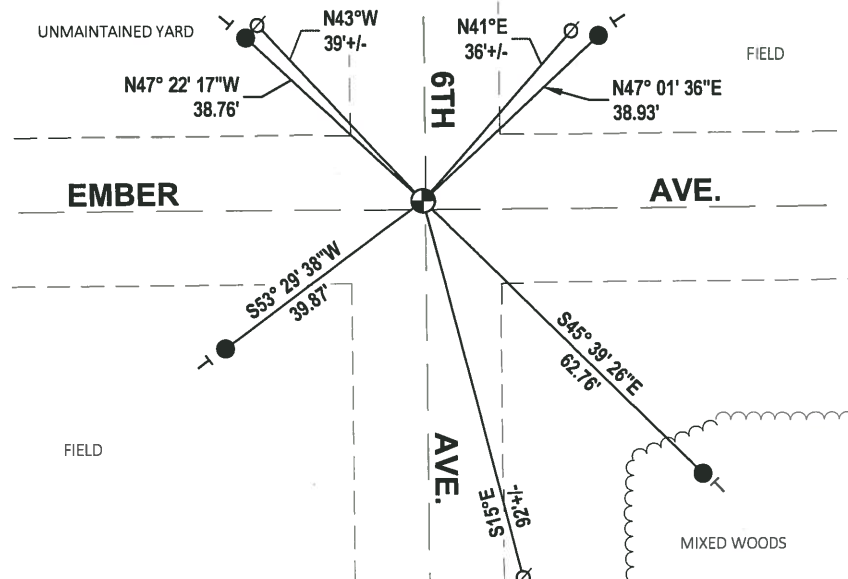
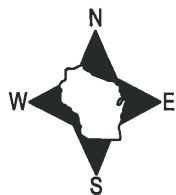
DATA SHOWN HERE ON THIS TIE SHEET IS CORRECT AND COMPLETE TO THE BEST OF MY KNOWLEDGE AND BELIEF.

PROFESSIONAL LAND SURVEYOR

DATE 11/3/2020

TIE SKETCH

NOTE: THE CORNER LANDS .5± WEST OF 6TH AVE. CENTERLINE AND 1.4± NORTH OF EMBER AVE. CENTERLINE.



- SET 3/4" x 18" IRON REBAR, 1.50#/FT
- ⊕ FOUND HARRISON MONUMENT
- ∅ WITNESS POWER POLE
- VINYL "T" POST

ADAMS COUNTY

Survey Monument Record

TYPE OF MONUMENT: Harrison Standard

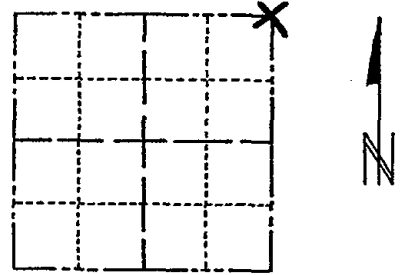
STATE PLANE COORDINATES: N _____
E _____

ELEVATION — M.S.L. DATUM: _____

THETA ANGLE: _____

FIELD BOOK: _____ PAGE _____

CORNER NO. 383
SECTION 30
TOWN 16
RANGE 7



LOCATION
(Indicated by 'X')

SEAL:



BASIS FOR MONUMENT LOCATION

(Use reverse side if necessary)

Show info such as: History of corner, with reference to Vol. and pg, dates, surveyor; exact description of monument replaced; if location computed, by taped or EDM traverse; landowner remarks, etc.

Excavated area with backhoe-found nothing.
Location set by analysis of the averse
of section.

CORNER	O.K.	2-22-77	GR-SS
"	"	3-22-82	"
"	"	11-26-86	GR
"	"	12-26-91	K2-GR
"	"	12-6-96	SS
"	"	1-03-02	ML
OK		1-30-07	JG-SS
4 NEW TIES		01-30-12	ML

CERTIFIED CORRECT:

Anthony B. Kiedrowski
Registered Land Surveyor

DATE: 6/12/74

TIE SKETCH

(Show at least four ties)

