

PUBLIC LAND SURVEY MONUMENT RECORD

TYPE OF MONUMENT: HARRISON (BROKEN-TOP)
 ADAMS COUNTY COORDINATES, NAD 83 (2007)

N. 175283.667

E. 565383.155

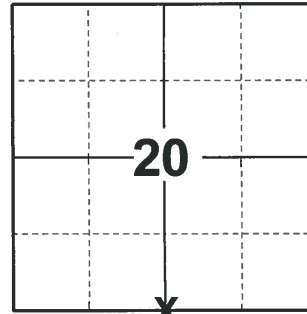
ELEVATION- _____ DATUM _____

FIELD WORK DATE: 10/05/2020

BASIS FOR MONUMENT LOCATION

1979 - PLS 878 NO RESURVEYS OF RECORD. EXCAVATED WITH BACKHOE. FOUND STAIN AND REMNANT OF 3" DIA POST. SET HARRISON MONUMENT AT POST. ALSO FOUND A WALL OF STONES 5" WEST. LOCATION VERIFIED BY EDM TRAVERSE.

2020 - PLS 2675 FOUND HARRISON (BROKEN-TOP) 12"± BELOW THE ROAD SURFACE AND 1 WITNESS. THE MONUMENT AGREES WITH THE EXISTING WITNESS. ACCEPTED THE HARRISON (BROKEN-TOP) AS THE CORNER LOCATION. SET 4 NEW TIES AND MEASURED TO THE EXISTING WITNESS.



LOCATION

(INDICATE CORNER BY "X")

SEAL:



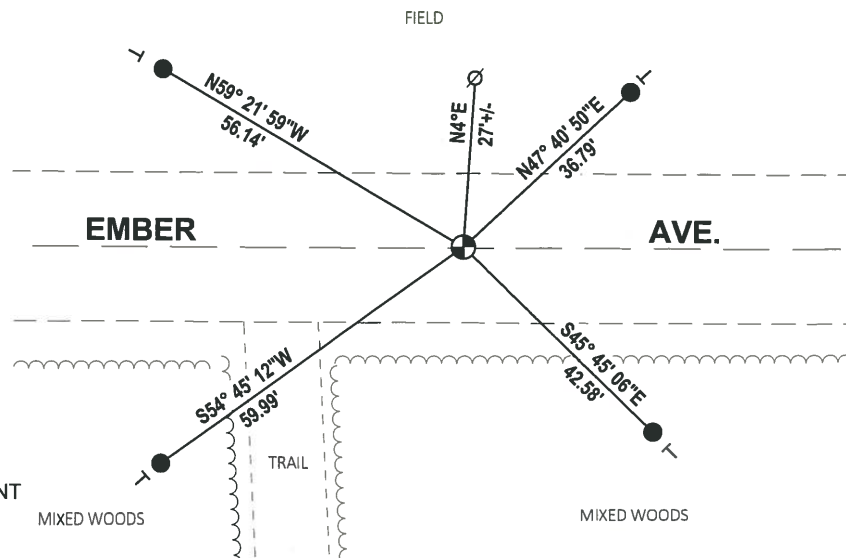
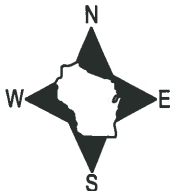
DATA SHOWN HERE ON THIS TIE SHEET IS CORRECT AND COMPLETE TO THE BEST OF MY KNOWLEDGE AND BELIEF.

PROFESSIONAL LAND SURVEYOR

DATE 11/3/2020

TIE SKETCH

NOTE: THE CORNER LANDS ON THE CENTERLINE OF EMBER AVE.

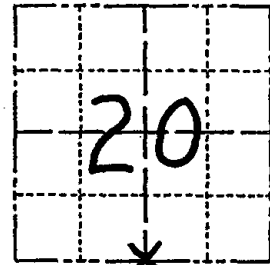


- SET 3/4" x 18" IRON REBAR, 1.50#/FT
- ⊕ FOUND HARRISON (BROKEN-TOP) MONUMENT
- ∅ WITNESS POWER POLE
- | VINYL "T" POST

Government Land Corner Certificate

ADAMS County
 TYPE OF MONUMENT: HARRISON
 STATE PLANE COORDINATES: N _____
 E _____
 ELEVATION — M.S.L. DATUM: _____
 THETA ANGLE: _____
 FIELD BOOK: 57 (102) PAGE 94 (7)
 DRAWN BY: B.S.

CORNER NO. 84
 SECTION 20
 TOWN 16
 RANGE 7



LOCATION
(Indicated by 'X')

BASIS FOR MONUMENT LOCATION

Show info such as: History of corner, with reference to Vol. and pg., dates, surveyor; exact description of monument replaced; if location computed, by taped or EDM traverse; landowner remarks, etc. (Use reverse side if necessary)

No resurveys of record. Excavated with backhoe. Found stain and remnant of 3" dia post. Set Harrison monument at post. Also found a wall of stones 5' west. Location verified by EDM traverse.

SEAL:



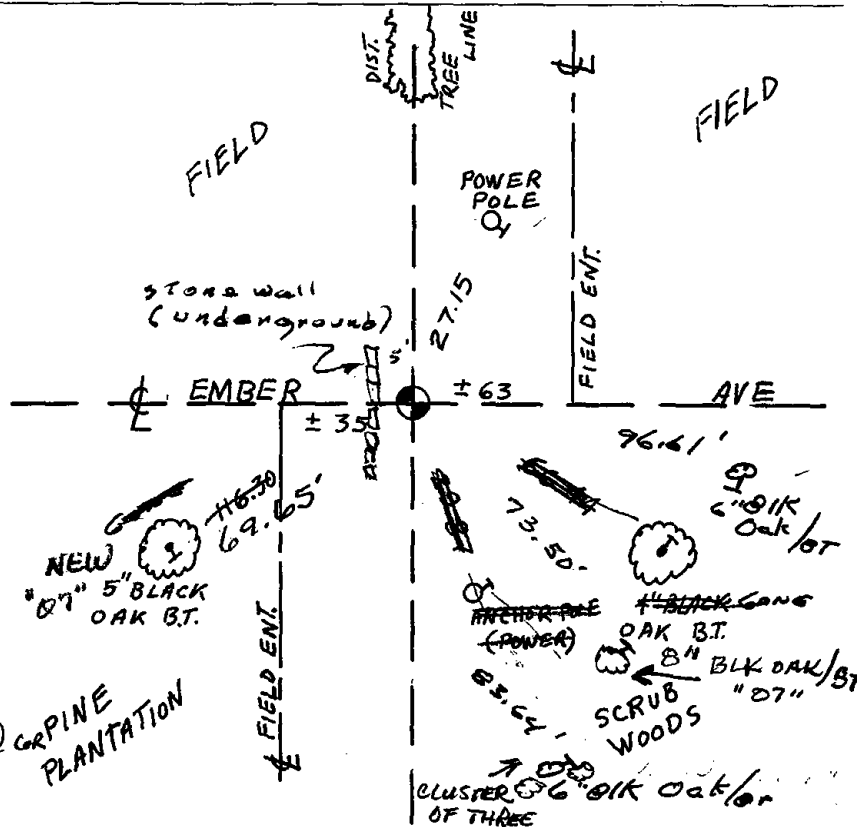
DATA SHOWN HERE ON
CERTIFIED CORRECT:

Anthony B. Kiedrowski
Registered Land Surveyor

DATE: 5/11/79

TIE SKETCH

Show at least four ties, also fence lines, roads, topo, size and type of witness trees and if off road - best way to arrive at corner.



MAINTENANCE RECORD

Date	Init.	Remarks
3-22-82	GR-SS	O.K.
12-9-86	" "	"
12-26-91	KZ-GR	"
12-6-91	"	"
1-03-02	ML	"
6-11-07	JG	2-NEW, FO PK NAIL @ GRPINE PLANTATION
1-18-12	MS	OK