

26  
SECTION

16  
TOWN

07  
RANGE

# ADAMS COUNTY

COUNTY CORNER NO: 99

ROMPORTOL ID: 41607262000

## PUBLIC LAND SURVEY MONUMENT RECORD

TYPE OF MONUMENT: HARRISON (BROKEN-TOP)

ADAMS COUNTY COORDINATES, NAD 83 (2007)

N. 172706.249

E. 583842.490

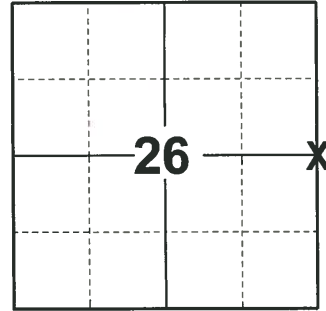
ELEVATION-        DATUM       

FIELD WORK DATE: 08/25/2020

### BASIS FOR MONUMENT LOCATION

1976 - PLS 922 CHECKED ADAMS COUNTY SURVEY RECORDS FOR RESURVEYS AND NONE WERE ON FILE MAKING REFERENCE TO THIS CORNER. RAN EDM TRAVERSE OF THE ENTIRE SECTION & RE-ESTABLISHED THIS CORNER BY THE SINGLE PROPORTIONATE METHOD.

2020 - PLS 2675 FOUND HARRISON (BROKEN-TOP) 12"± BELOW THE GROUND AND 1 TIE. THE MONUMENT AGREES WITH THE TIE. ACCEPTED THE HARRISON (BROKEN-TOP) AS THE CORNER LOCATION. SET 4 NEW TIES AND MEASURED TO THE EXISTING TIE.



### LOCATION

(INDICATE CORNER BY "X")

SEAL:

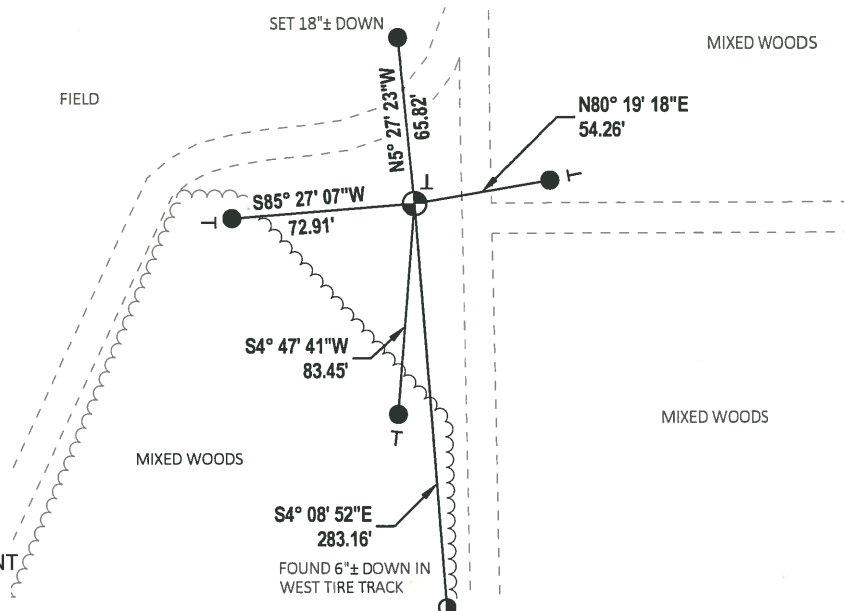


DATA SHOWN HERE ON THIS TIE SHEET IS CORRECT AND COMPLETE TO THE BEST OF MY KNOWLEDGE AND BELIEF.

PROFESSIONAL LAND SURVEYOR

DATE 11/3/2020

### - TIE SKETCH



- SET 3/4" x 18" IRON REBAR, 1.50#/FT
- ⊙ FOUND 1/2" IRON ROD
- ⊕ FOUND HARRISON (BROKEN-TOP) MONUMENT
- ⊖ VINYL "T" POST

# ADAMS COUNTY

## Survey Monument Record

TYPE OF MONUMENT: STANDARD 30" HARRISON

STATE PLANE COORDINATES: N \_\_\_\_\_

E \_\_\_\_\_

ELEVATION — M.S.L. DATUM: \_\_\_\_\_

THETA ANGLE: \_\_\_\_\_

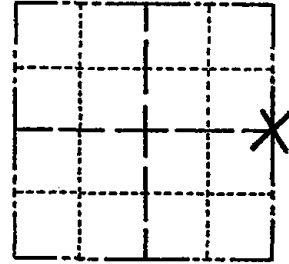
FIELD BOOK: \_\_\_\_\_ PAGE \_\_\_\_\_

CORNER NO. 1065 99

SECTION 26

TOWN 16N

RANGE 7E



LOCATION  
(Indicated by 'X')

SEAL:



### BASIS FOR MONUMENT LOCATION

(Use reverse side if necessary)

Show info such as: History of corner, with reference to Vol. and pg, dates, surveyor; exact description of monument replaced; if location computed, by taped or EDM traverse; landowner remarks, etc.

CHECKED ADAMS COUNTY SURVEY RECORDS FOR RESURVEYS AND NONE WERE ON FILE MAKING REFERENCE TO THIS CORNER.  
RAN E.D.M. TRAVERSE OF ENTIRE SECTION & RE-ESTABLISHED THIS CORNER BY THE SINGLE PROPORTIONATE METHOD

CORNER	O.K.	2-22-77	GR-SS
"	"	4-12-82	"
"	"	12-9-86	"
"	"	12-23-91	K2-SS
"	"	ADD 2 TIES	12-11-96 - SS
"	"	3-6-02	- JG

CERTIFIED CORRECT:

*Frederic W. Zietlow*

Registered Land Surveyor

DATE: SEPTEMBER 30, 1976

TIE SKETCH OK, 6-20-07 - JG  
OK 01-25-12 MS

(Show at least four ties)

