

25 SECTION 16 TOWN 06 RANGE

# ADAMS COUNTY

COUNTY CORNER NO: 113  
ROMPORTOL ID: 41606250000

## PUBLIC LAND SURVEY MONUMENT RECORD

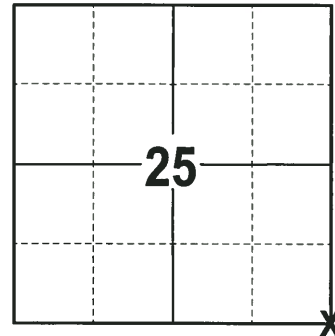
TYPE OF MONUMENT: HARRISON  
ADAMS COUNTY COORDINATES, NAD 83 (2007)

N. 169994.559

E. 557710.482

ELEVATION-      DATUM     

FIELD WORK DATE: 09/16/2017



**LOCATION**  
(INDICATE CORNER BY "X")

SEAL:



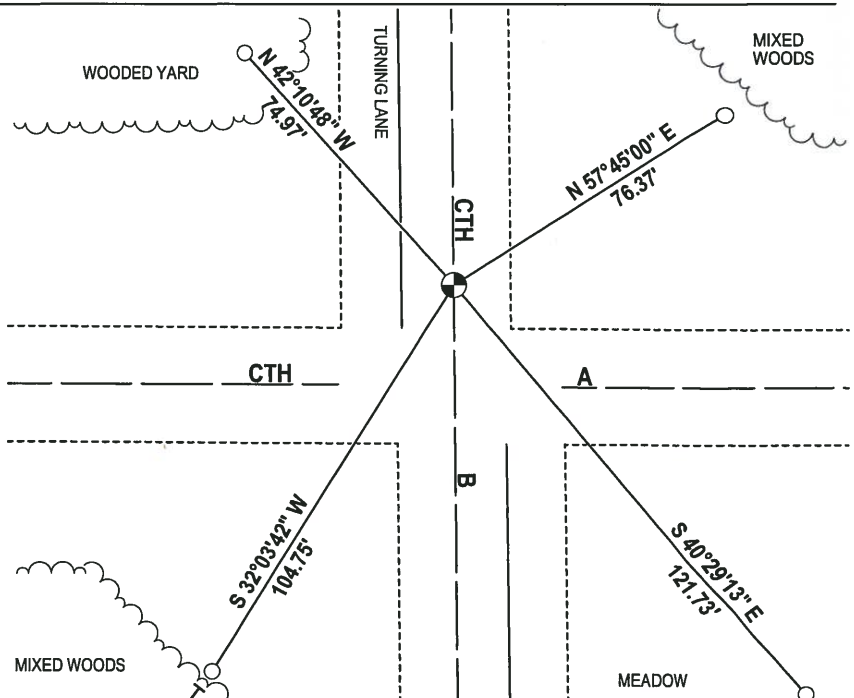
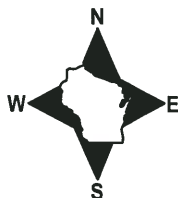
DATA SHOWN HERE ON THIS TIE SHEET IS CORRECT AND COMPLETE TO THE BEST OF MY KNOWLEDGE AND BELIEF.

PROFESSIONAL LAND SURVEYOR

DATE 12-4-17

### - TIE SKETCH -

NOTE: THE CORNER FALLS 21 1/2' NORTH OF THE CENTERLINE OF CTH A.



- 1-1/4" O.D. IROD PIPE FOUND
- ⊕ HARRISON FOUND
- VINYL "T" POST

# ADAMS COUNTY

## Survey Monument Record

TYPE OF MONUMENT: 30" HARRISON

STATE PLANE COORDINATES: N \_\_\_\_\_  
E \_\_\_\_\_

ELEVATION — M.S.L. DATUM: \_\_\_\_\_

THETA ANGLE: \_\_\_\_\_

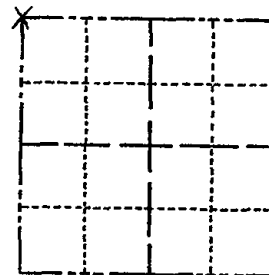
FIELD BOOK: 103 PAGE 128

CORNER NO. 128 101

SECTION 31

TOWN 16

RANGE 7



LOCATION  
(Indicated by 'X')

SEAL:

### BASIS FOR MONUMENT LOCATION

(Use reverse side if necessary)

Show info such as: History of corner, with reference to Vol. and pg, dates, surveyor; exact description of monument replaced; if location computed, by taped or EDM traverse; landowner remarks, etc.

Found .08' outside diameter iron pipe and set 30" harrison monument on May 16, 1972 by Sam T. Mullen R.L.S. 981

CORNER O.K. 3-31-77 GR-SS  
 " " 3-22-82 "  
 " " 12-9-86 GR-SS  
 SEE KEN CARLSON NEXT PAGE  
 ALL OK 1/15/97 JG-SS

CERTIFIED CORRECT:

Registered Land Surveyor

DATE: \_\_\_\_\_

TIE SKETCH SEE ATTACHED SHEET GROHOLSKI 12/21/99 - TIES OK 1-30-07 OK 1-20-12 MS  
 OK 1-03-02 - ML

(Show at least four ties)

