

PUBLIC LAND SURVEY MONUMENT RECORD

TYPE OF MONUMENT: HARRISON
 ADAMS COUNTY COORDINATES, NAD 83 (2007)

N. 169998.058

E. 565375.180

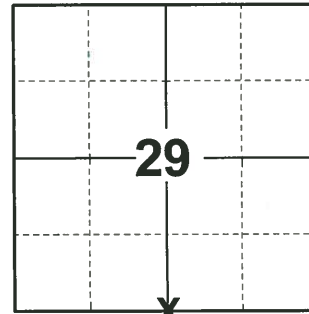
ELEVATION- DATUM

FIELD WORK DATE: 08/26/2020

BASIS FOR MONUMENT LOCATION

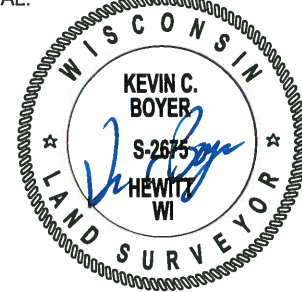
1976 - PLS 1103 RAN EDM/TRANSIT TRAVERSE AROUND SECTIONS 32-34 TO DETERMINE SEARCH AREAS. COULD FIND NO EVIDENCE OF ORIGINAL CORNER, REMONUMENTATION OR ACCESSORY MONUMENTS. RE-ESTABLISHED CORNER BY SINGLE PROPORTIONATE MEASURE BETWEEN AND ON LINE BETWEEN ADJACENT SECTION CORNERS. SET HARRISON MONUMENT.

2020 - PLS 2675 FOUND HARRISON 3"± ABOVE THE GROUND AND DID NOT RECOVER ANY EXISTING TIES OR WITNESSES. VERIFIED THAT THE CORNER LOCATION IS ON A NEAR STRAIGHT LINE AND EQUIDISTANT BETWEEN ADJACENT SECTION CORNERS. ACCEPTED THE HARRISON AS THE BEST AVAILABLE EVIDENCE OF THE CORNER LOCATION AND SET 4 NEW TIES.



LOCATION
 (INDICATE CORNER BY "X")

SEAL:



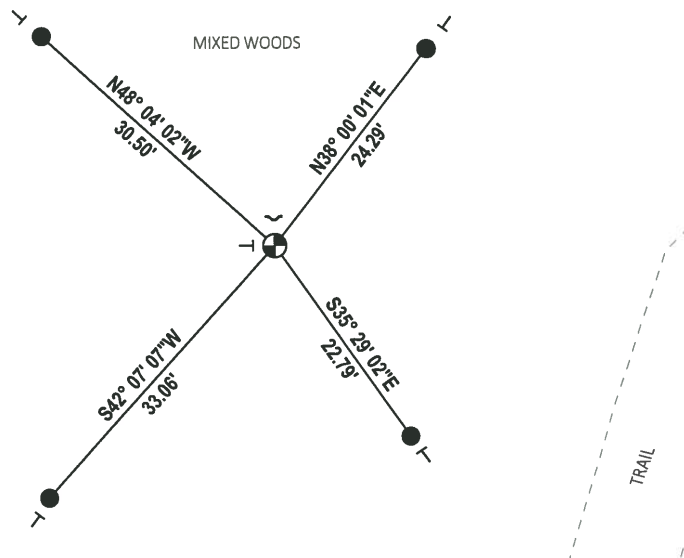
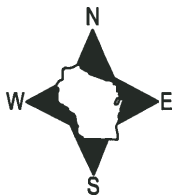
DATA SHOWN HERE ON THIS TIE SHEET IS CORRECT AND COMPLETE TO THE BEST OF MY KNOWLEDGE AND BELIEF.

PROFESSIONAL LAND SURVEYOR

DATE 11/3/2020

- TIE SKETCH

NOTE: THE CORNER LANDS 36'± WEST OF THE TRAIL.



- SET 3/4" x 18" IRON REBAR, 1.50#/FT
- ⊕ FOUND HARRISON MONUMENT
- ┘ STEEL FENCE POST
- ┘ VINYL "T" POST

ADAMS COUNTY

Survey Monument Record

TYPE OF MONUMENT: Harrison Monument

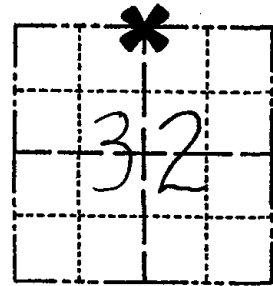
STATE PLANE COORDINATES: N _____
E _____

ELEVATION — M.S.L. DATUM: _____

THETA ANGLE: _____

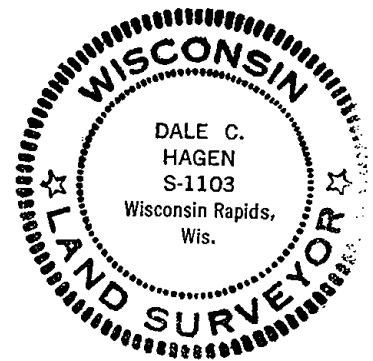
FIELD BOOK: 38 PAGE 21

CORNER NO. 104
SECTION 32
TOWN 16
RANGE 7



LOCATION
(Indicated by 'X')

SEAL:



BASIS FOR MONUMENT LOCATION

(Use reverse side if necessary)

Show info such as: History of corner, with reference to Vol. and pg, dates, surveyor; exact description of monument replaced; if location computed, by taped or EDM traverse; landowner remarks, etc.

Ran EDM/transit traverse around Sections 32-34 to determine search areas.

Could find no evidence of the original corner, re-monumentation or accessory monuments.

Re-established corner by single proportionate measure between and on line between adjacent section corners.

Set Harrison Monument on 10-20-76.

Cor	OK	4-13-82	GR-55
"	OK	12-15-86	GL
"	"	12-26-91	K2-GR
"	"	3-4-02	JG
"	"	6-19-07	JG
OK	01-25-12	MS	

CERTIFIED CORRECT:

Dale C Hagen
Registered Land Surveyor

DATE: 12-1-76

TIE SKETCH

(Show at least four ties)

NOTE

Ties in trees to nail in disc.

