

29
SECTION

16
TOWN

07
RANGE

ADAMS COUNTY

COUNTY CORNER NO: 105

ROMPORTOL ID: 41607290000

PUBLIC LAND SURVEY MONUMENT RECORD

TYPE OF MONUMENT: HARRISON

ADAMS COUNTY COORDINATES, NAD 83 (2007)

N. 169994.230

E. 568018.271

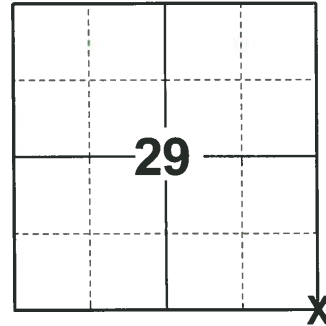
ELEVATION- - - - - DATUM - - - - -

FIELD WORK DATE: 08/26/2020

BASIS FOR MONUMENT LOCATION

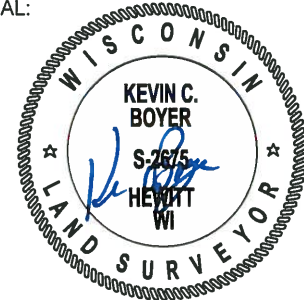
1976 - PLS 1103 RAN EDM/T2 TRAVERSE AROUND PARTS OF SECTION 32 TO DETERMINE SEARCH AREA. FOUND STANDING ORIGINAL BEARING TREE (14" WHITE OAK S64°E 105 LINKS- ORIGINAL TIES). EXCAVATED BY HAND AT LOCATION INDICATED BY BEARING TREE, BUT FOUND NOTHING. SET CORNER BY COMING RECORD DISTANCE AND BEARING FROM FACE OF ORIGINAL 14" TREE. SET HARRISON.

2020 - PLS 2675 FOUND HARRISON 2"± ABOVE THE GROUND AND 2 WITNESS TREE STUMPS. THE MONUMENT AGREES WITH BOTH WITNESS STUMPS. ACCEPTED THE HARRISON AS THE CORNER LOCATION. SET 4 NEW TIES AND MEASURED TO THE EXISTING WITNESS TREE STUMPS.



LOCATION
(INDICATE CORNER BY "X")

SEAL:

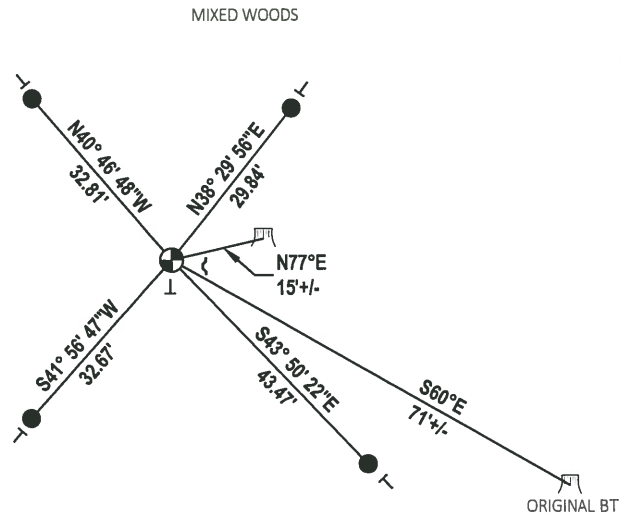


DATA SHOWN HERE ON THIS TIE SHEET IS CORRECT AND COMPLETE TO THE BEST OF MY KNOWLEDGE AND BELIEF.

PROFESSIONAL LAND SURVEYOR

DATE 11/3/2020

- TIE SKETCH



- SET 3/4" x 18" IRON REBAR, 1.50#/FT
- ⊕ FOUND HARRISON MONUMENT
- ┘ STEEL FENCE POST
- └ VINYL "T" POST
- ⌌ WITNESS STUMP

ADAMS COUNTY

Survey Monument Record

TYPE OF MONUMENT: Harrison

STATE PLANE COORDINATES: N _____
E _____

ELEVATION — M.S.L. DATUM: _____

THETA ANGLE: _____

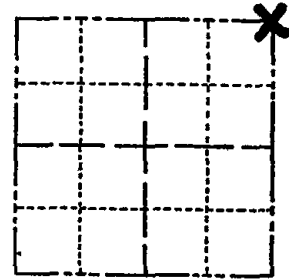
FIELD BOOK: 38 PAGE 11

CORNER NO. 1061 ⁽¹⁰⁵⁾

SECTION 32

TOWN 16 N

RANGE 7 E



LOCATION
(Indicated by 'X')

SEAL:



BASIS FOR MONUMENT LOCATION

(Use reverse side if necessary)

Show info such as: History of corner, with reference to Vol. and pg, dates, surveyor; exact description of monument replaced; if location computed, by taped or EDM traverse; landowner remarks, etc.

Ran EDM/T-2 traverse around parts of Section 32 to determine search area.

Found standing original bearing tree (14" White Oak S 64° E 105 links - ORIGINAL TIES). Excavated by hand at location indicated by bearing tree, but found nothing.

Set corner by coming record distance and bearing from face of original 14" tree.

Set Harrison July 2, 1976.

CORNER	O.K.	2-22-77	GR-SS
"	"	4-13-82	GR
"	"	12-15-86	GR
"	"	1-2-92	GR-JG
"	"	1-23-02	MS

CERTIFIED CORRECT:

Dale C. Hagen
Registered Land Surveyor

DATE: July 7, 1976

TIE SKETCH OK, 6-19-07 - JG
OK 01-25-12 MS
(Show at least four ties)

NOTE:

Ties in trees to nail in disc.

