

## PUBLIC LAND SURVEY MONUMENT RECORD

TYPE OF MONUMENT: HARRISON  
 ADAMS COUNTY COORDINATES, NAD 83 (2007)

N. 170058.033

E. 573289.174

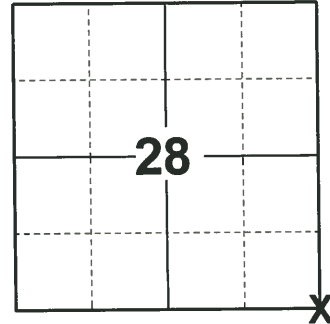
ELEVATION- \_\_\_\_\_ DATUM \_\_\_\_\_

FIELD WORK DATE: 08/25/2020

### BASIS FOR MONUMENT LOCATION

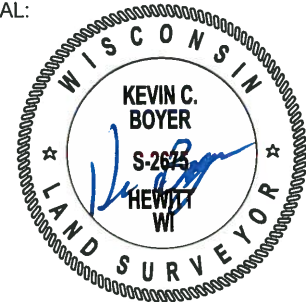
1977 - PLS 1103 RAN EDM/T2 TRAVERSE AROUND SECTIONS 26 AND 27 TO DETERMINE SEARCH AREAS FOR INVESTIGATION. EXCAVATION WITH BACKHOE BY A. KIEDROWSKI, ADAMS COUNTY SURVEYOR, YIELDED IRON PIN, BUT NO OTHER EVIDENCE OF THE CORNER OR ANY REMONUMENTATION. REPLACED IRON PIN WITH HARRISON MONUMENT.

2020 - PLS 2675 FOUND HARRISON 3"± BELOW THE ROAD SURFACE AND 1 TIE. THE MONUMENT AGREES WITH THE TIE. ACCEPTED THE HARRISON AS THE CORNER LOCATION. SET 3 NEW TIES AND MEASURED TO THE EXISTING TIE.



**LOCATION**  
 (INDICATE CORNER BY "X")

SEAL:



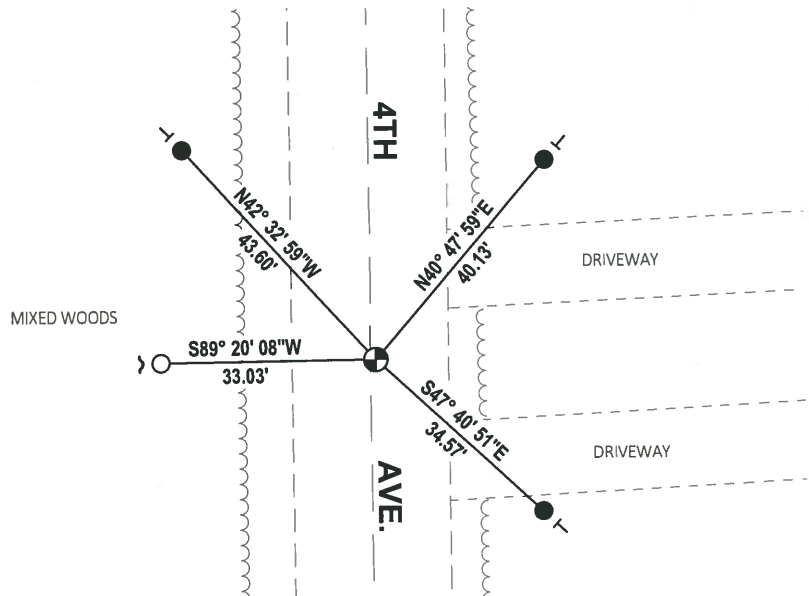
DATA SHOWN HERE ON THIS TIE SHEET IS CORRECT AND COMPLETE TO THE BEST OF MY KNOWLEDGE AND BELIEF.

PROFESSIONAL LAND SURVEYOR

DATE 11/3/2020

### - TIE SKETCH

NOTE: THE CORNER LANDS 1'± EAST OF 4TH AVE. CENTERLINE.



- SET 3/4" x 18" IRON REBAR, 1.50#/FT
- FOUND 3/4" IRON ROD
- ⊕ FOUND HARRISON MONUMENT
- ┘ STEEL FENCE POST
- └ VINYL "T" POST

**ADAMS COUNTY**

**Survey Monument Record**

TYPE OF MONUMENT: Harrison

STATE PLANE COORDINATES: N \_\_\_\_\_

E \_\_\_\_\_

ELEVATION — M.S.L. DATUM: \_\_\_\_\_

THETA ANGLE: \_\_\_\_\_

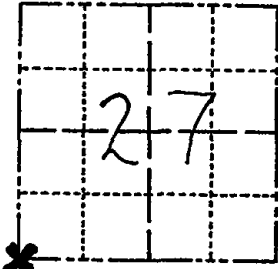
FIELD BOOK: 38 PAGE 35

CORNER NO. 107

SECTION 27

TOWN 16

RANGE 7



LOCATION  
(Indicated by 'X')

SEAL:



**BASIS FOR MONUMENT LOCATION**

(Use reverse side if necessary)

Show info such as: History of corner, with reference to Vol. and pg, dates, surveyor; exact description of monument replaced; if location computed, by taped or EDM traverse; landowner remarks, etc.

Ran EDM/T2 traverse around Sections 26 and 27 to determine search areas for investigation.

Excavation with backhoe by Anthony B. Kiedrowski, Adams County Surveyor, yielded Iron Pin, but no other evidence of the corner or any remonumentation.

Replaced iron pin with Harrison Monument.

OK	4-13-82	GR-SS
OK	12-12-86	CK
"	12-26-91	K2-GR
"	12-16-96	SS
"	1-03-02	ML

CERTIFIED CORRECT:

*Dale C Hagen*  
Registered Land Surveyor

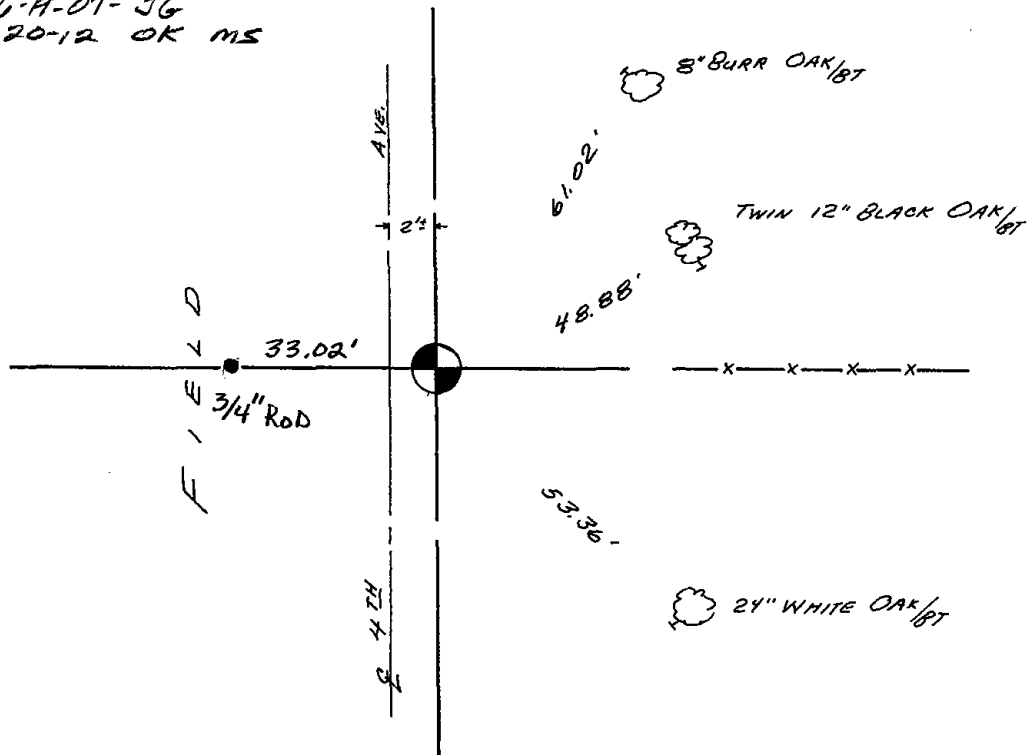
DATE: 5-31-77

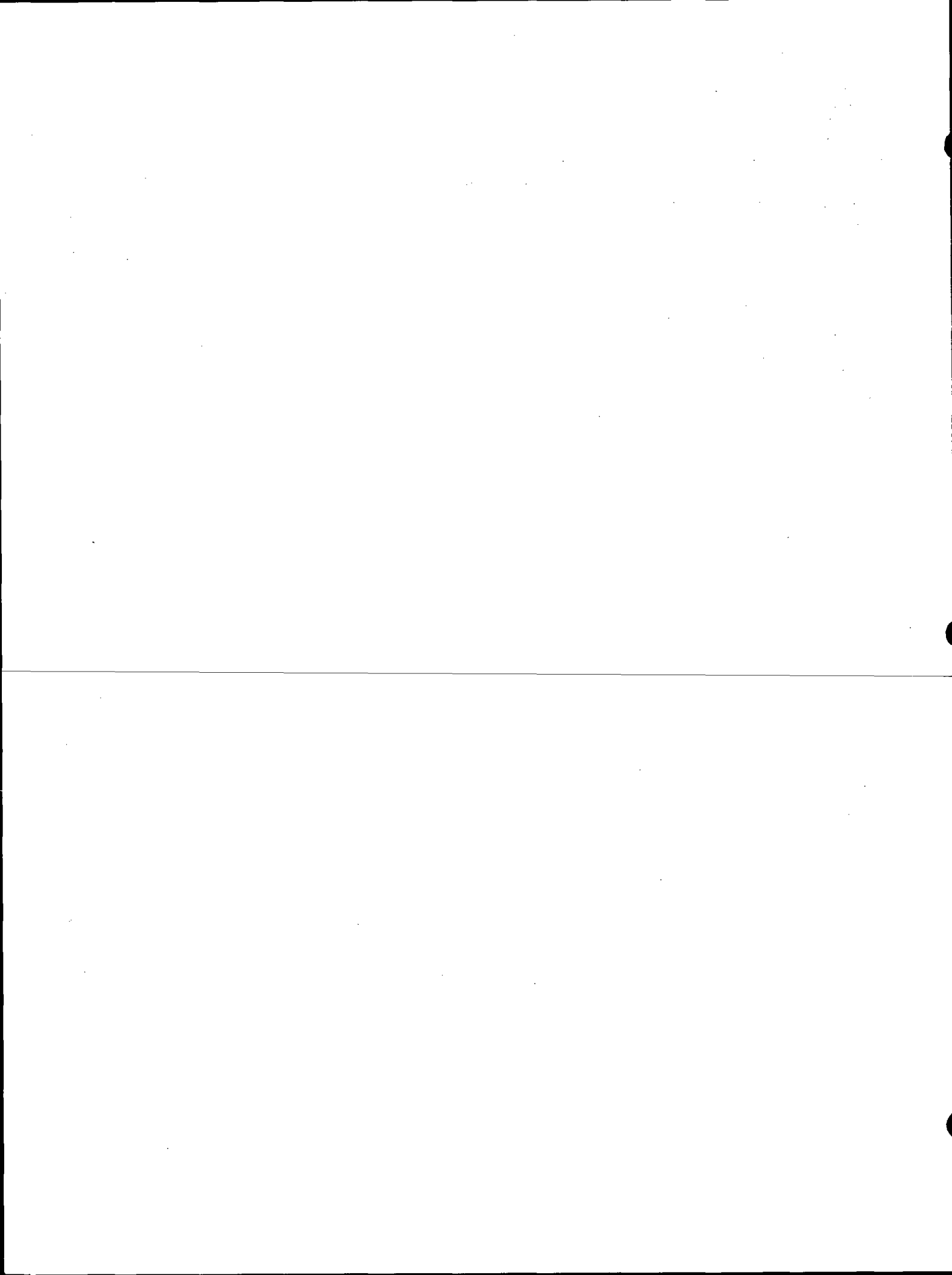
**TIE SKETCH** OK, G-A-01-JG  
01-20-12 OK MS

(Show at least four ties)

**NOTE**

Ties in trees to nail in disc.



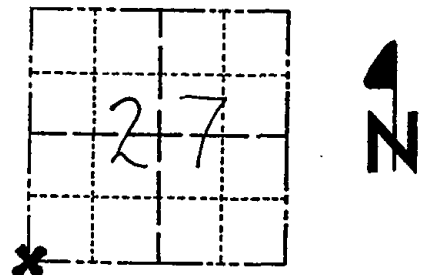


ADAMS COUNTY

Survey Monument Record

TYPE OF MONUMENT: Harrison  
 STATE PLANE COORDINATES: N \_\_\_\_\_  
 E \_\_\_\_\_  
 ELEVATION — M.S.L. DATUM: \_\_\_\_\_  
 THETA ANGLE: \_\_\_\_\_  
 FIELD BOOK: 38 PAGE 35

CORNER NO. 107  
 SECTION 27  
 TOWN 16  
 RANGE 7



LOCATION  
(Indicated by 'X')

SEAL:



BASIS FOR MONUMENT LOCATION

(Use reverse side if necessary)

Show info such as: History of corner, with reference to Vol. and pg, dates, surveyor; exact description of monument replaced; if location computed, by taped or EDM traverse; landowner remarks, etc.

Ran EDM/T2 traverse around Sections 26 and 27 to determine search areas for investigation.

Excavation with backhoe by Anthony B. Kiedrowski, Adams County Surveyor, yielded Iron Pin, but no other evidence of the corner or any remonumentation.

Replaced iron pin with Harrison Monument.

new tie	1-28-03	ME+BF
OK	4-13-82	GR-SS
OK	12-12-50	CK
"	12-26-91	K2-GR
"	12-16-96	SS
"	1-03-02	ML

CERTIFIED CORRECT:

*Dale C Hagen*  
 Registered Land Surveyor

DATE: 5-31-77

TIE SKETCH

(Show at least four ties)

NOTE

Ties in trees to nail in disc.

