

27
SECTION

16
TOWN

07
RANGE

ADAMS COUNTY

COUNTY CORNER NO: 108

ROMPORTOL ID: 41607270020

PUBLIC LAND SURVEY MONUMENT RECORD

TYPE OF MONUMENT: HARRISON
ADAMS COUNTY COORDINATES, NAD 83 (2007)

N. 170053.256

E. 575930.576

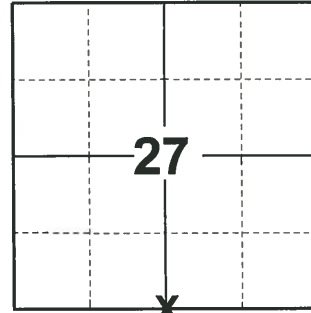
ELEVATION- DATUM

FIELD WORK DATE: 08/25/2020

BASIS FOR MONUMENT LOCATION

1976 - PLS 1103 RAN EDM/TRANSIT TRAVERSE AROUND SECTIONS 27 AND 34, AND PARTS OF SECTIONS 26 AND 35 TO DETERMINE SEARCH AREAS FOR INVESTIGATION. DID NOT EXCAVATE WITH BACKHOE BECAUSE SEARCH AREA FALLS WITHIN CONSTRUCTION LIMITS OF THE RAILROAD. SET CORNER BY SINGLE PROPORTIONATE MEASURE BETWEEN THE SOUTHWEST AND SOUTHEAST CORNERS OF SECTION 27.

2020 - PLS 2675 FOUND HARRISON LAYING FLAT AND DID NOT RECOVER ANY EXISTING TIES OR WITNESSES. STRAIGHTENED UP HARRISON AND CORNER AGREES TO BE ON A NEAR STRAIGHT LINE AND EQUIDISTANT SPLIT BETWEEN THE SW AND SE CORNERS OF SECTION 27. ACCEPTED THIS AS THE CORNER LOCATION, RESET HARRISON, AND SET 4 NEW TIES.



LOCATION
(INDICATE CORNER BY "X")

SEAL:

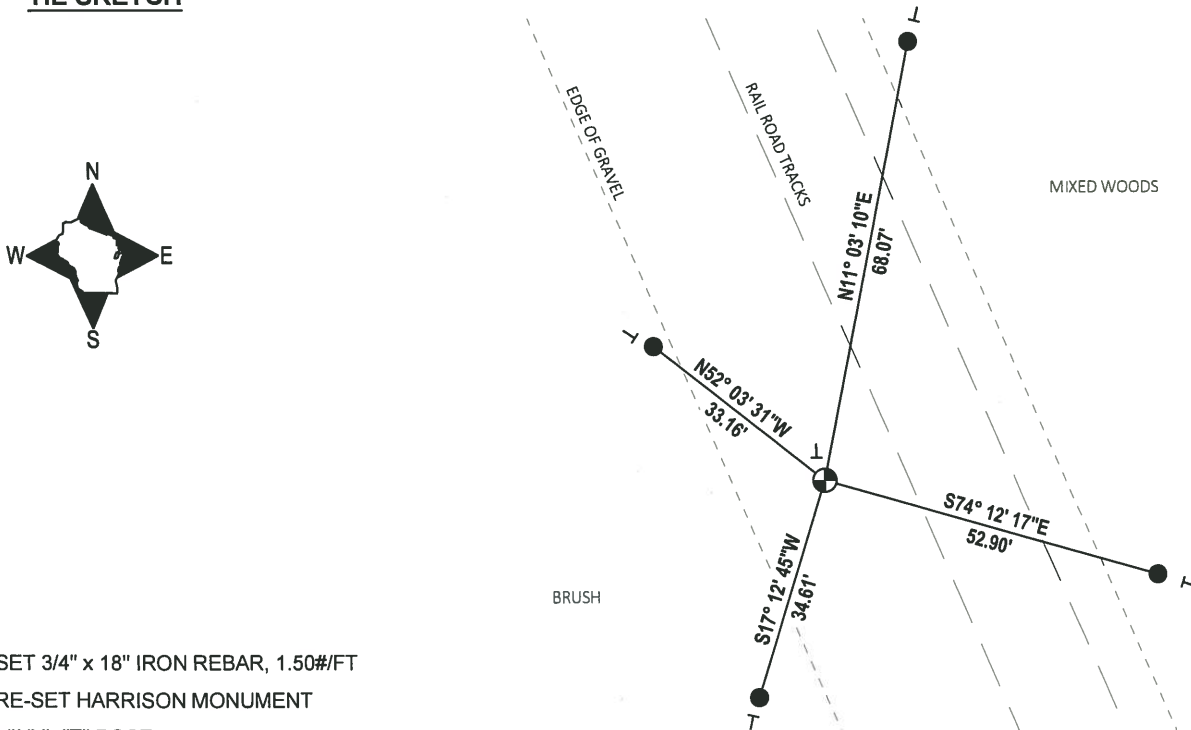


DATA SHOWN HERE ON THIS TIE SHEET IS CORRECT AND COMPLETE TO THE BEST OF MY KNOWLEDGE AND BELIEF.

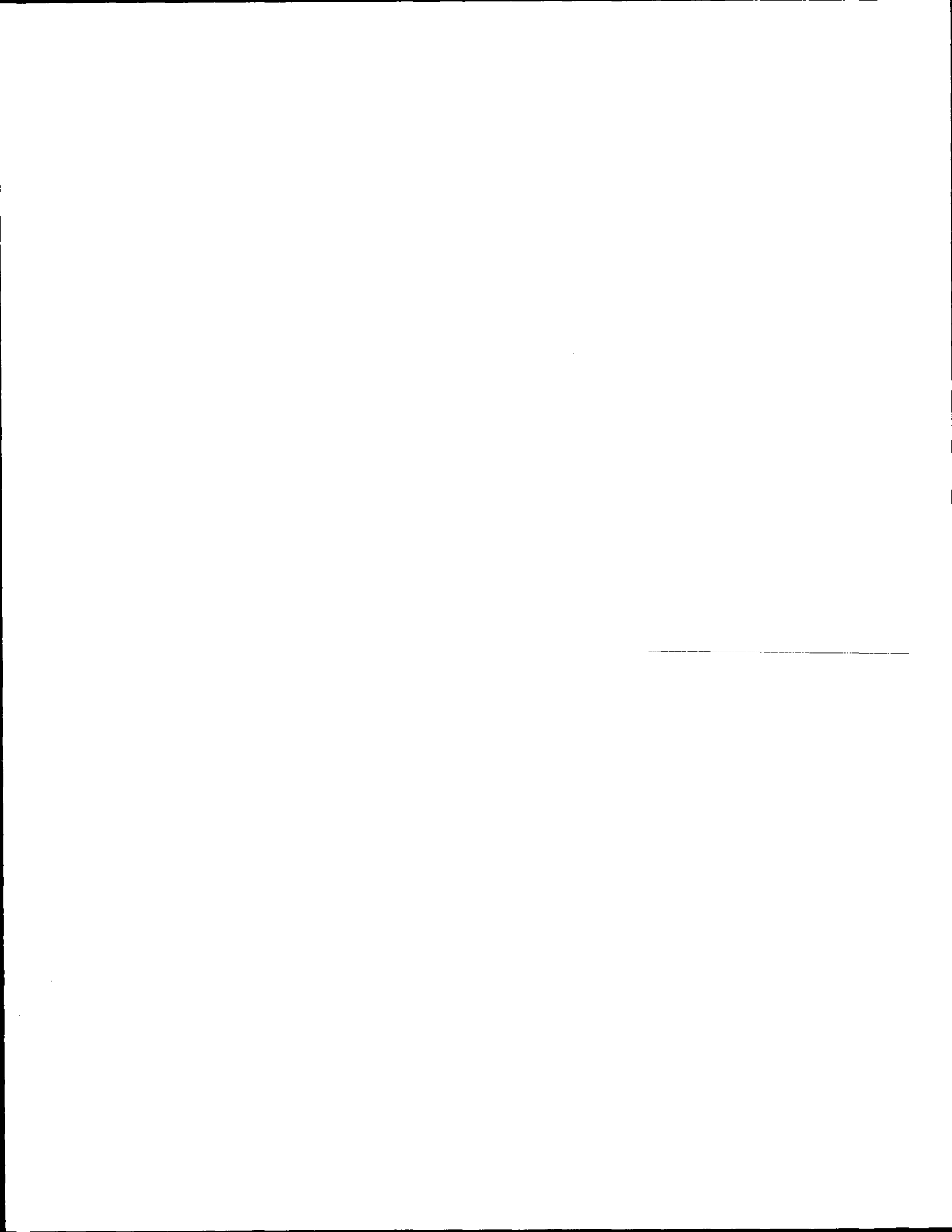
PROFESSIONAL LAND SURVEYOR

DATE 11/3/2020

- TIE SKETCH



- SET 3/4" x 18" IRON REBAR, 1.50#/FT
- ⊕ RE-SET HARRISON MONUMENT
- VINYL "T" POST



ADAMS COUNTY

Survey Monument Record

TYPE OF MONUMENT: Harrison Monument

STATE PLANE COORDINATES: N _____

E _____

ELEVATION — M.S.L. DATUM: _____

THETA ANGLE: _____

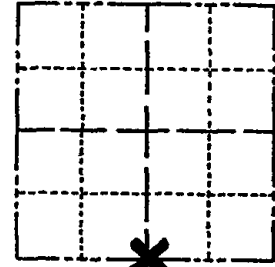
FIELD BOOK: 37 PAGE 55

CORNER NO. 1060

SECTION 27

TOWN 16

RANGE 7



LOCATION
(Indicated by 'X')

SEAL:

BASIS FOR MONUMENT LOCATION

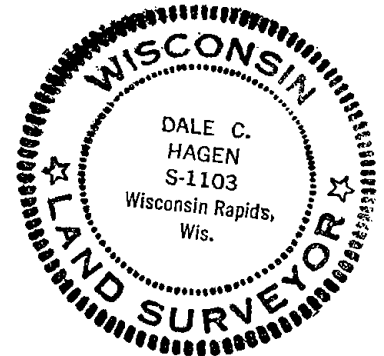
(Use reverse side if necessary)

Show info such as: History of corner, with reference to Vol. and pg, dates, surveyor; exact description of monument replaced; if location computed, by taped or EDM traverse; landowner remarks, etc.

Ran EDM/transit traverse around Section 27 and 34, and parts of Sections 26 and 35 to determine search areas for investigation.

Did not excavate with backhoe because search area falls within construction limits of the Railroad.

Set corner by single proportionate measure between the Southwest and Southeast corners of Section 27.



CORNER	O.K.	2-22-77	GR-SS
"	"	1-5-87	" "
"	"	1-2-92	GR-EG
"	"	1-15-97	JG-SS
"	"	3-5-02	JG

CERTIFIED CORRECT:

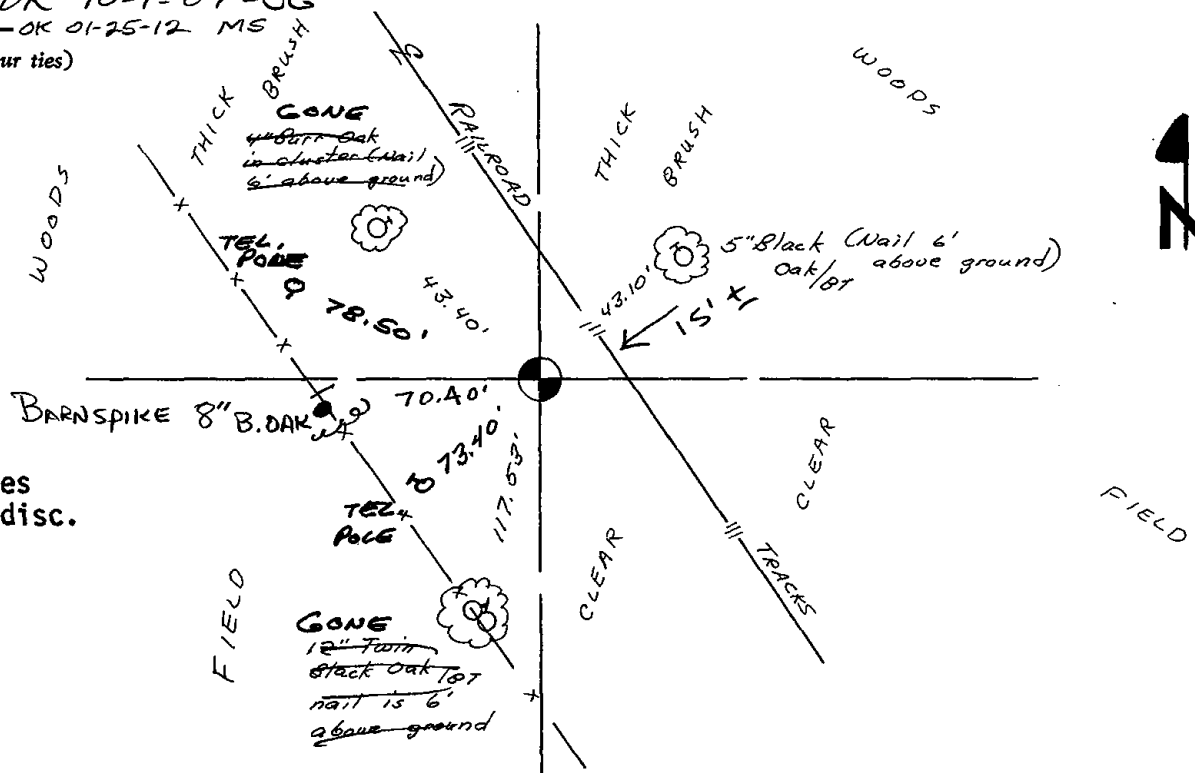
Dale C. Hagen
Registered Land Surveyor

DATE: 7-7-76

TIE SKETCH OK 10-1-07-JG

OK 01-25-12 MS

(Show at least four ties)



NOTE:
Ties in trees
to nail in disc.

ADAMS COUNTY

Survey Monument Record

TYPE OF MONUMENT: Harrison Monument

STATE PLANE COORDINATES: N _____

E _____

ELEVATION — M.S.L. DATUM: _____

THETA ANGLE: _____

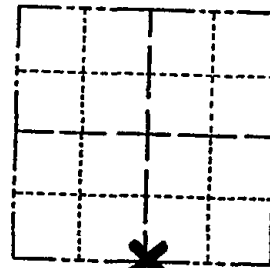
FIELD BOOK: 37 PAGE 55

CORNER NO. 1060 108

SECTION 27

TOWN 16

RANGE 7



LOCATION
(Indicated by 'X')

SEAL:



BASIS FOR MONUMENT LOCATION

(Use reverse side if necessary)

Show info such as: History of corner, with reference to Vol. and pg. dates, surveyor; exact description of monument replaced; if location computed, by taped or EDM traverse; landowner remarks, etc.

Ran EDM/transit traverse around Section 27 and 34, and parts of Sections 26 and 35 to determine search areas for investigation.

Did not excavate with backhoe because search area falls with construction limits of the Railroad.

Set corner by single proportionate measure between the Southwest and Southeast corners of Section 27.

new tie	1-28-03	MC+BF
Corner OK	2-22-77	GR-SS
"	"	"
"	1-2-92	GR-EG
"	1-15-97	JG-SS
"	3-5-02	LG

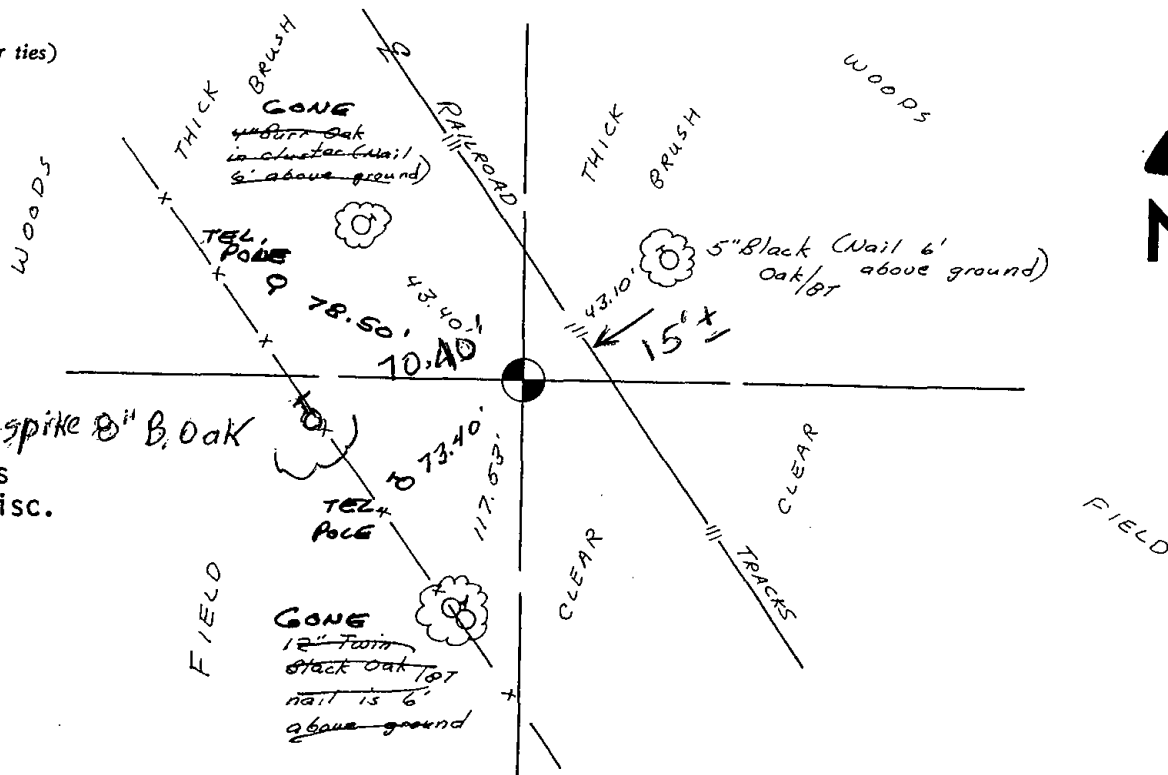
CERTIFIED CORRECT:

Dale C. Hagen
Registered Land Surveyor

DATE: 7-7-76

TIE SKETCH

(Show at least four ties)



NOTE: Barnspike 8" B. Oak
Ties in trees
to nail in disc.