

PUBLIC LAND SURVEY MONUMENT RECORD

TYPE OF MONUMENT: HARRISON (BROKEN-TOP)
 ADAMS COUNTY COORDINATES, NAD 83 (2007)

N. 170047.072

E. 583846.322

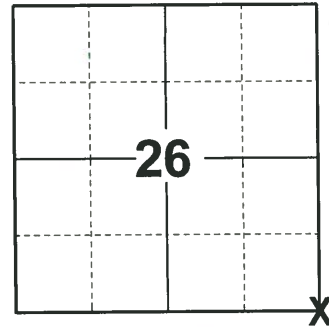
ELEVATION- DATUM

FIELD WORK DATE: 08/25/2020

BASIS FOR MONUMENT LOCATION

1975 - PLS 1103 SET THIS CORNER BY DOUBLING OVER THE NORTH LINE OF THE NW1/4 OF SECTION 35. RAN EDM/TRANSIT TRAVERSE OF ENTIRE AREA AND EXCAVATED BY HAND. NO EVIDENCE WAS FOUND.

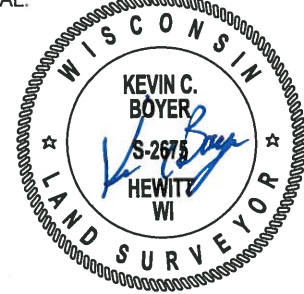
2020 - PLS 2675 FOUND HARRISON (BROKEN-TOP) 6"± BELOW THE GROUND AND DID NOT RECOVER ANY EXISTING TIES OR WITNESSES. ACCEPTED THE HARRISON (BROKEN-TOP) AS THE BEST AVAILABLE EVIDENCE OF THE CORNER LOCATION AND SET 4 NEW TIES.



LOCATION

(INDICATE CORNER BY "X")

SEAL:

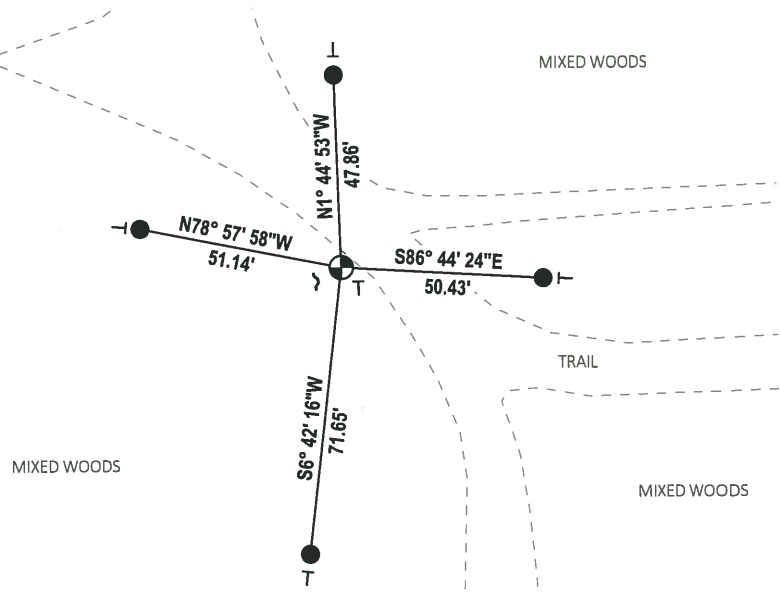


DATA SHOWN HERE ON THIS TIE SHEET IS CORRECT AND COMPLETE TO THE BEST OF MY KNOWLEDGE AND BELIEF.

PROFESSIONAL LAND SURVEYOR

DATE 11/3/2020

- TIE SKETCH



- SET 3/4" x 18" IRON REBAR, 1.50#/FT
- ⊕ FOUND HARRISON (BROKEN-TOP) MONUMENT
- ~ STEEL FENCE POST
- VINYL "T" POST

ADAMS COUNTY

Survey Monument Record

TYPE OF MONUMENT: Harrison Monument

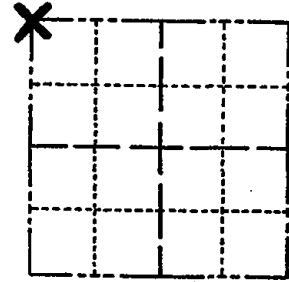
STATE PLANE COORDINATES: N _____
E _____

ELEVATION — M.S.L. DATUM: _____

THETA ANGLE: _____

FIELD BOOK: _____ PAGE _____

CORNER NO. 687
SECTION 36
TOWN 16
RANGE 7



LOCATION
(Indicated by 'X')

BASIS FOR MONUMENT LOCATION

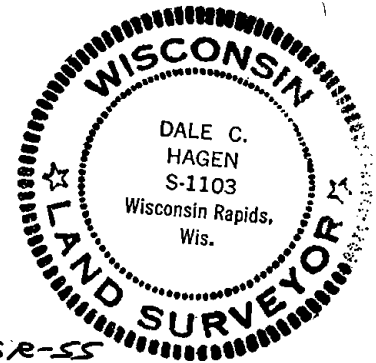
(Use reverse side if necessary)

Show info such as: History of corner, with reference to Vol. and pg, dates, surveyor; exact description of monument replaced; if location computed, by taped or EDM traverse; landowner remarks, etc.

Set this corner by doubling over the North line of the NW $\frac{1}{4}$ of section 35.

Ran EDM /transit traverse of entire area and excavated by hand. No evidence was found.

SEAL:



CORNER	O.K.	2-22-77	GR-SS
TOP	BROKEN	BOTTOM	IN PLACE
4-12-82	GR-SS		
"	"	- 1 NEW TIE	12-9-86
			GR-SS
"	"	1 NEW	12-23-91
			K2-SS
"	"	TIES OK	12-11-96
			SS
"	"	1-09-02	- MH
OK,	10-01-07	- JG	

CERTIFIED CORRECT:
Dale C. Hagen
Registered Land Surveyor
DATE: 6/3/75

TIE SKETCH OK 01-25-12 MS

(Show at least four ties)

NOTE: Ties in trees to nail in disc.

