

PUBLIC LAND SURVEY MONUMENT RECORD

TYPE OF MONUMENT: HARRISON (BROKEN TOP)
 ADAMS COUNTY COORDINATES, NAD 83 (2007)

N. 170063.802

E. 589144.237

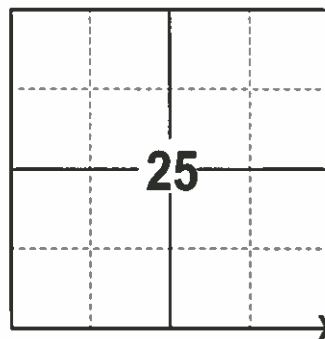
ELEVATION- - - DATUM - -

FIELD WORK DATE: 1/31/2017

BASIS FOR MONUMENT LOCATION

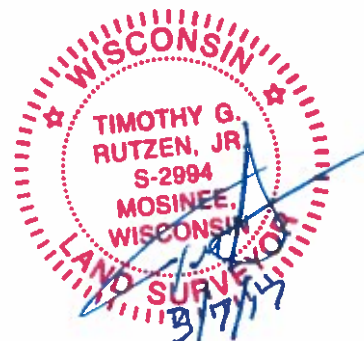
1975 - PLS 1103 PERFORMED A HAND EXCAVATION AND FOUND A STAIN OF A DRIVEN POST NEAR A FENCE CORNER. A TRAVERSE VERIFIED THE POSITION WITH RESPECT TO EXISTING EVIDENCE. SET A HARRISON.

2017 - PLS 2994 FOUND EXISTING HARRISON WITH A BROKEN TOP 24 INCHES BELOW THE THE GROUND SURFACE AND 1 EXISTING WITNESS. THE HARRISON AGREES WITH THE EXISTING WITNESS. ACCEPTED THE HARRISON AND SET 4 NEW TIES.



LOCATION
(INDICATE CORNER BY "X")

SEAL:



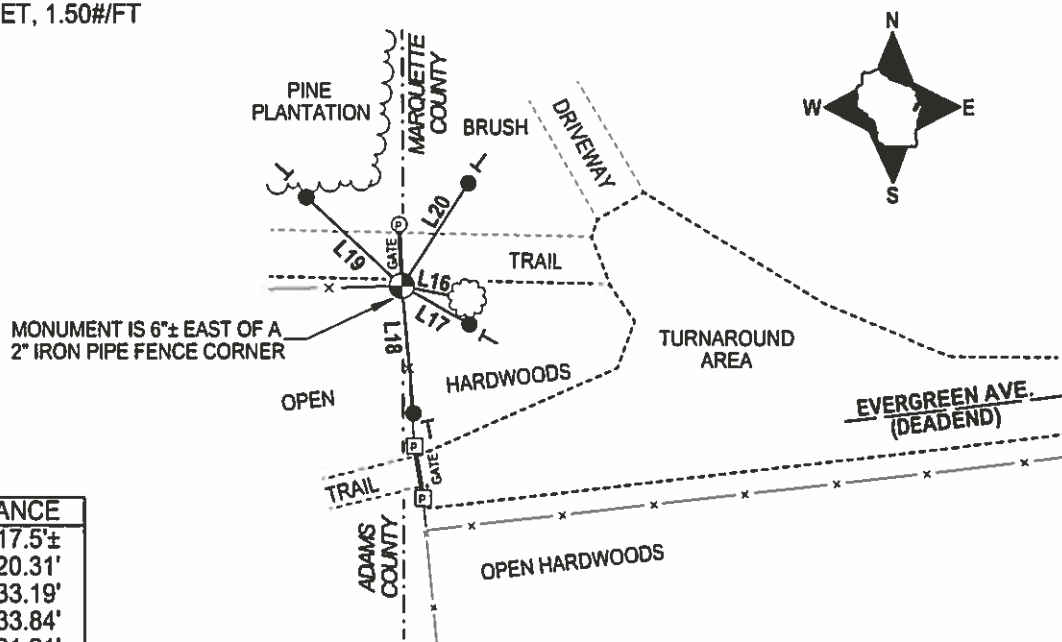
DATA SHOWN HERE ON THIS TIE SHEET IS CORRECT AND COMPLETE TO THE BEST OF MY KNOWLEDGE AND BELIEF.

PROFESSIONAL LAND SURVEYOR

DATE 3/7/17

- TIE SKETCH -

- 3/4" x 18" IRON REBAR SET, 1.50#/FT
- ⊕ FOUND HARRISON
- ⊠ GATE POST
- ⊙ FENCE POST
- VINYL "T" POST
- ☼ FOUND WITNESS TREE



LINE	BEARING	DISTANCE
L16	S 78°49' E	17.5±
L17	S 60°30'35" E	20.31'
L18	S 05°01'37" E	33.19'
L19	N 47°10'17" W	33.84'
L20	N 33°19'51" E	31.91'

ADAMS COUNTY

Survey Monument Record

TYPE OF MONUMENT: Harrison Monument

STATE PLANE COORDINATES: N _____

E _____

ELEVATION — M.S.L. DATUM: _____

THETA ANGLE: _____

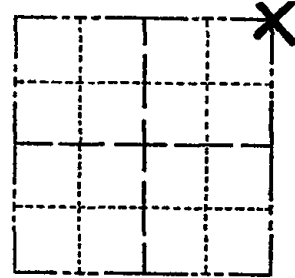
FIELD BOOK: _____ PAGE _____

CORNER NO. 689

SECTION 36

TOWN 16

RANGE 7



LOCATION
(Indicated by 'X')

SEAL:

BASIS FOR MONUMENT LOCATION

(Use reverse side if necessary)

Show info such as: History of corner, with reference to Vol. and pg, dates, surveyor; exact description of monument replaced; if location computed, by taped or EDM traverse; landowner remarks, etc.

Hand excavation revealed stain of driven post near fence corner. EDM/transit traverse verified position of corner with respect to existing evidence, in the area.



CORNER	O.K.	2-22-77	GR-SS
"	"	4-12-82	"
"	"	12-9-86	"
"	"	12-23-91	KZ-SS

1-NEW TIE, COR OK 4/2/97 JG-SS

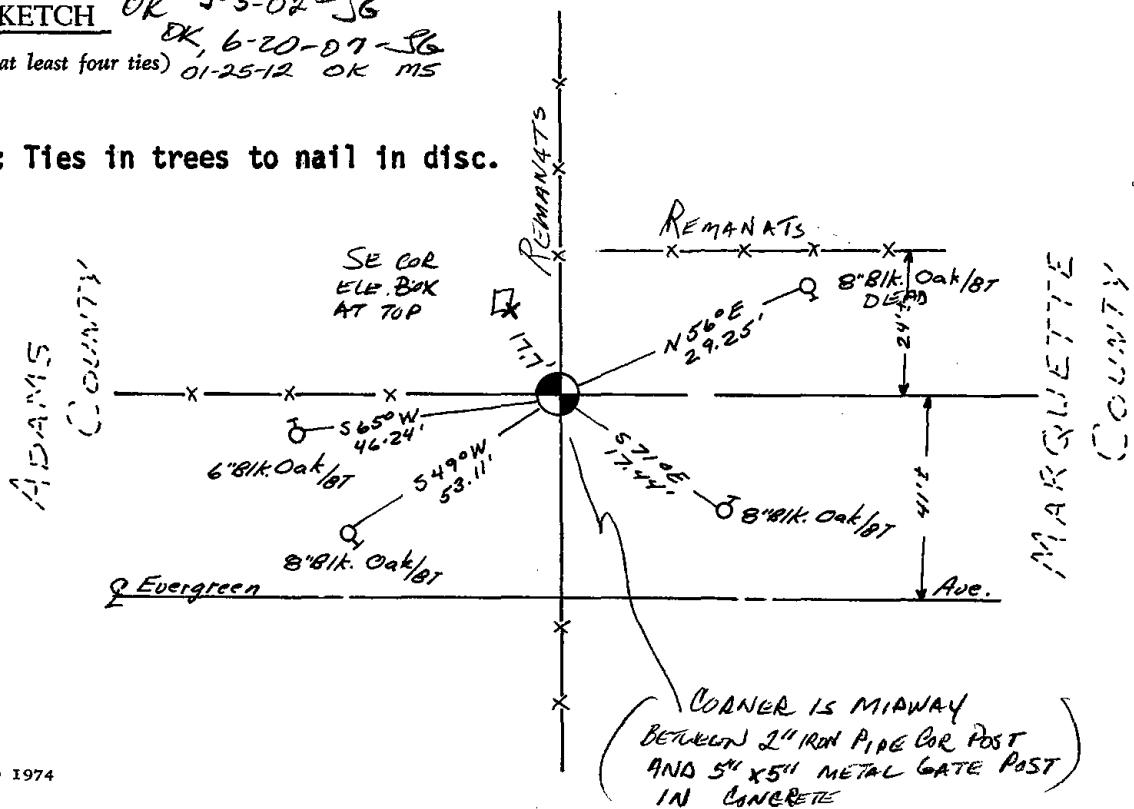
CERTIFIED CORRECT:

Dale C. Hagen
Registered Land Surveyor

DATE: 6/3/75

TIE SKETCH OK 3-5-02-JG
OK, 6-20-07-JG
(Show at least four ties) 01-25-12 OK MS

NOTE: Ties in trees to nail in disc.



CORNER IS MIAWAY
BETWEEN 2" IRON PIPE COR POST
AND 5" X 5" METAL GATE POST
IN CONCRETE