

PUBLIC LAND SURVEY MONUMENT RECORD

TYPE OF MONUMENT: HARRISON
ADAMS COUNTY COORDINATES, NAD 83 (2007)

N. 167396.792

E. 578565.105

ELEVATION- DATUM

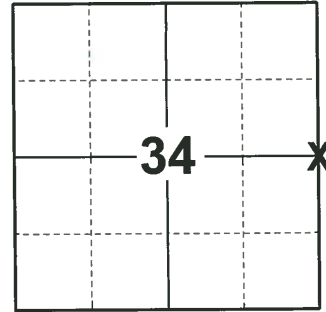
FIELD WORK DATE: 10/07/2020

BASIS FOR MONUMENT LOCATION

1975 - PLS 1103 RAN EDM/TRANSIT TRAVERSE AROUND SECTIONS 27 AND 34, AND PARTS OF SECTIONS 26 AND 35, PICKING UP ALL AVAILABLE EVIDENCE. SET EAST QUARTER CORNER ON THE EXTENSION OF THE LINE BETWEEN THE WEST QUARTER CORNER AND THE CENTER OF SECTION 34 AT THE RECORD DISTANCE (40 CHAINS) AS DESCRIBED BY M.C. SMITH, ADAMS COUNTY SURVEYOR, ON PAGE 120 OF VOLUME 1 OF SURVEY RECORDS IN THE COUNTY SURVEYOR'S OFFICE, HAVING BEEN DONE ON APRIL 25, 1910.

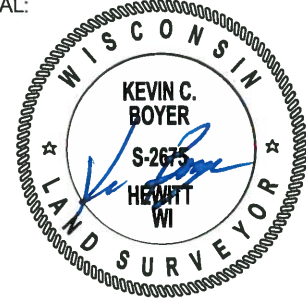
2006 - PLS 2357 LOCATED AND TIED TO THIS CORNER WHICH WAS THEN TAKEN OUT DUE TO ROAD CONSTRUCTION. THEN REPLACED CORNER WITH HARRISON MONUMENT AFTER COMPLETION OF ROAD AND SET NEW TIES.

2020 - PLS 2675 FOUND HARRISON 6"± BELOW THE ROAD SURFACE, 2 TIES, AND 1 WITNESS. THE MONUMENT AGREES WITH THE EXISTING TIES AND WITNESS. ACCEPTED THE HARRISON AS THE CORNER LOCATION. SET 2 NEW TIES AND MEASURED TO THE EXISTING TIES AND WITNESS.



LOCATION
(INDICATE CORNER BY "X")

SEAL:



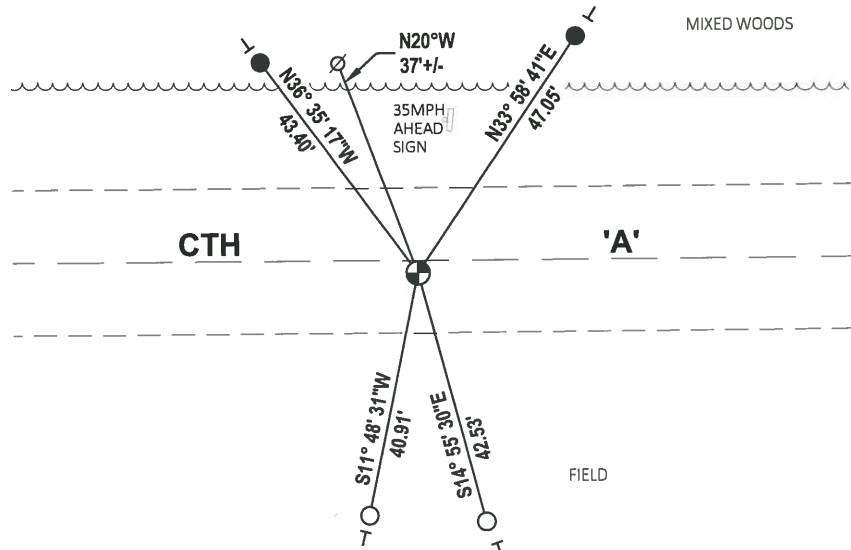
DATA SHOWN HERE ON THIS TIE SHEET IS CORRECT AND COMPLETE TO THE BEST OF MY KNOWLEDGE AND BELIEF.

PROFESSIONAL LAND SURVEYOR

DATE 11/3/2020

- TIE SKETCH

NOTE: THE CORNER LANDS 2'± SOUTH OF CTH 'A' CENTERLINE AND 200'± WEST OF A 10'X6' BOX CULVERT.



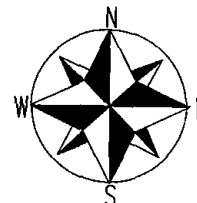
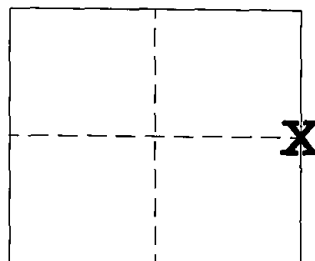
- SET 3/4" x 18" IRON REBAR, 1.50#/FT
- FOUND 3/4" IRON ROD
- ⊕ FOUND HARRISON MONUMENT
- ∅ WITNESS POWER POLE
- VINYL "T" POST

**ADAMS COUNTY
GOVERNMENT LAND CORNER CERTIFICATE**

CORNER NO. **118**

SECTION 34
TOWN 16 NORTH
RANGE 7 EAST

TYPE OF MONUMENT: STANDARD HARRISON
A.C.C.S COORDINATES N: 167396.68
E: 578565.18



ELEV. M.S.L. DATUM:
THETA ANGLE:
FIELD BOOK: PAGE:
DRAWN BY: KELLY D. CALLAWAY

BASIS FOR CORNER LOCATION

M.C. Smith : Vol. 1 Page 120 of Survey Records (April 1910)
Dale C. Hagen: Set Harrison by using a line extended from the West
1/4 corner
to the Center 1/4, at a distance of 40 chains.

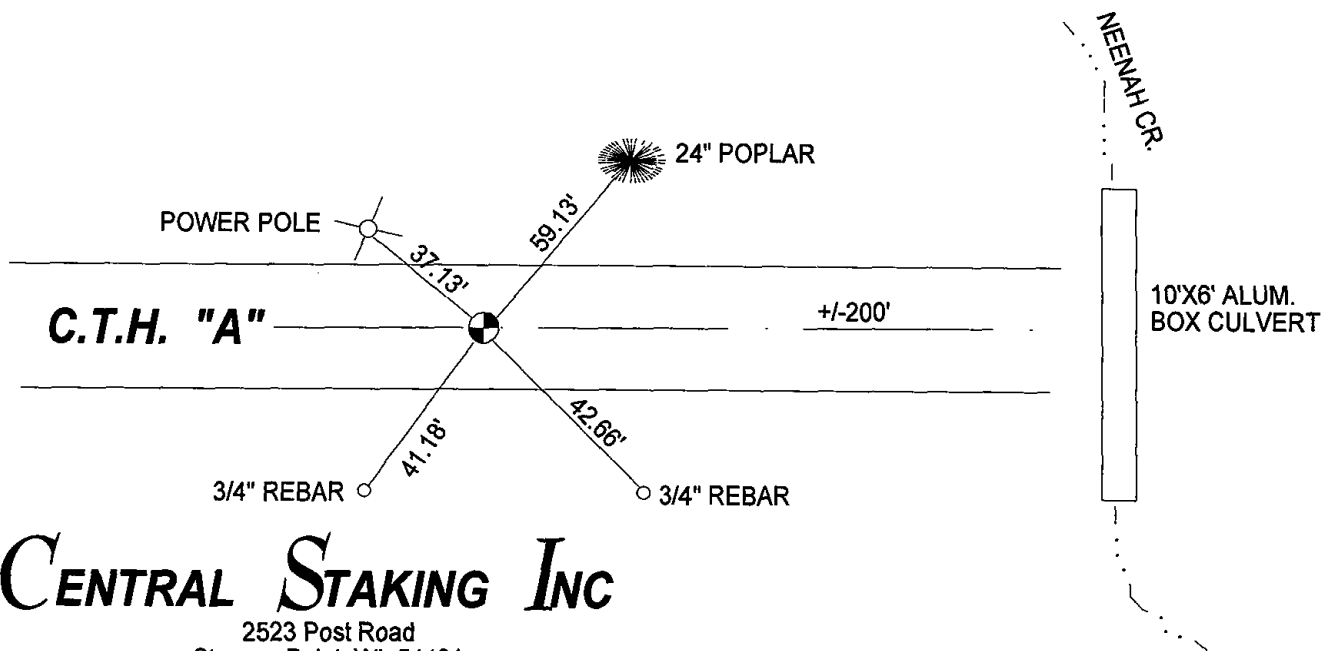
July of 2006 I located and tied to this corner which was then
taken out due to road construction. I then replaced corner with
a Harrison monument after completion of road and set new ties as
shown.

OK 01-20-12 MS

SEAL

*SEE TIE SHEET
DATED 06-03-75*

CERTIFIED CORRECT
REGISTERED LAND SURVEYOR



CENTRAL STAKING INC

2523 Post Road
Stevens Point, WI 54481
Office: 715-345-6904 Fax: 715-345-7728

ADAMS COUNTY

Survey Monument Record

TYPE OF MONUMENT: Harriso Standard

STATE PLANE COORDINATES: N _____

E _____

ELEVATION — M.S.L. DATUM: _____

THETA ANGLE: _____

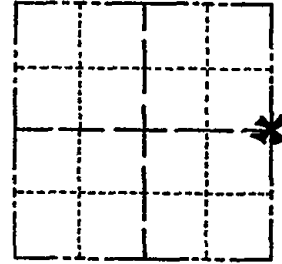
FIELD BOOK: _____ PAGE _____

CORNER NO. 674 ⁽¹¹⁸⁾

SECTION 34

TOWN 16 N

RANGE 7E



LOCATION
(Indicated by 'X')

SEAL:

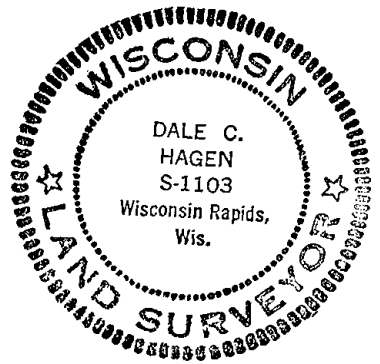
BASIS FOR MONUMENT LOCATION

(Use reverse side if necessary)

Show info such as: History of corner, with reference to Vol. and pg, dates, surveyor; exact description of monument replaced; if location computed, by taped or EDM traverse; landowner remarks, etc.

Ran EDM/transit traverse around Sections 27 and 34, and parts of Sections 26 and 35, picking up all available evidence.

Set East Quarter corner on the extension of the line between the West Quarter corner and the center of Section 34 at the record distance (40 chains) as described by M. C. Smith, Adams County Surveyor, on page 120 of Volume 1 of Survey Records in the County Surveyor's Office, having been done on April 25, 1910.



TOP BROKEN - BOTTOM IN PLACE	3-28-77	GR-55
"	4-13-82	"
"	1-5-87	"
"	1-2-92	GR-56
1-GONE, 1-NEW	12-11-96	JG

CERTIFIED CORRECT:

Dale C. Hagen
Registered Land Surveyor

DATE: 6/3/75

TIE SKETCH

(Show at least four-ties)

