

PUBLIC LAND SURVEY MONUMENT RECORD

TYPE OF MONUMENT: HARRISON
 ADAMS COUNTY COORDINATES, NAD 83 (2007)

N. 164699.939

E. 562720.263

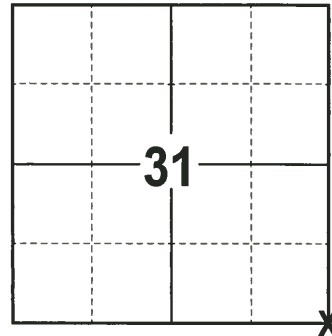
ELEVATION- DATUM

FIELD WORK DATE: 12/12/2017

BASIS FOR MONUMENT LOCATION

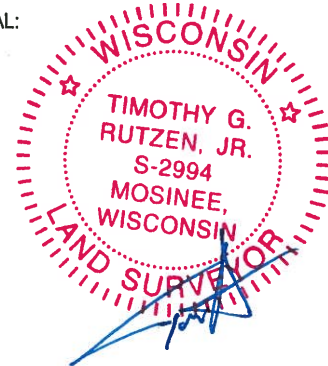
1975 - PLS 1103 FOUND TWO 2" IRON PIPES SIDE BY SIDE. MONUMENTED THE POSITION OF THE ONE THAT MATCHED THE TIE TO LUELLA WOOD SUBDIVISION, THE SENIOR OF THE ADJACENT SURVEYS. SET A HARRISON MONUMENT AT THE CORNER LOCATION AND TIED OUT.

2017 - PLS 2994 FOUND A HARRISON MONUMENT FLUSH WITH THE GROUND SURFACE AND 1 TIE. THE MONUMENT AGREES WITH THE EXISTING TIE. ACCEPTED THE HARRISON MONUMENT AS THE CORNER LOCATION. SET 3 NEW TIES AND MEASURED TO THE TIES.



LOCATION
 (INDICATE CORNER BY "X")

SEAL:



DATA SHOWN HERE ON THIS TIE SHEET IS CORRECT AND COMPLETE TO THE BEST OF MY KNOWLEDGE AND BELIEF.

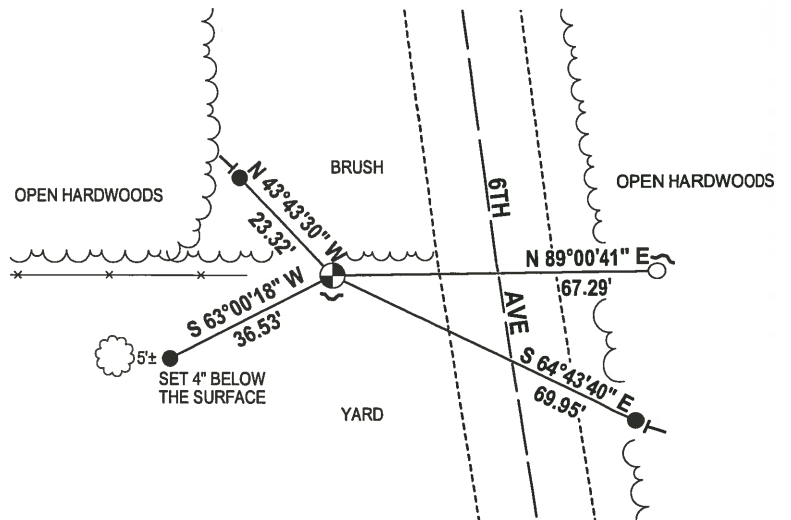
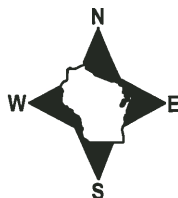
PROFESSIONAL LAND SURVEYOR

DATE 1-4-18

- TIE SKETCH

NOTE 1: THE CORNER FALLS 35± WEST OF THE CENTERLINE OF 6TH AVE.

NOTE 2: THE CORNER IS 0.30± WEST OF A 2-3/8" O.D. IRON PIPE.



- 3/4" x 18" IRON REBAR SET, 1.50#/FT
- 1-5/8" IRON ROD FOUND
- ⊕ HARRISON FOUND
- ↙ STEEL FENCE POST
- VINYL "T" POST

ADAMS COUNTY

Survey Monument Record

TYPE OF MONUMENT: Standard Harrison

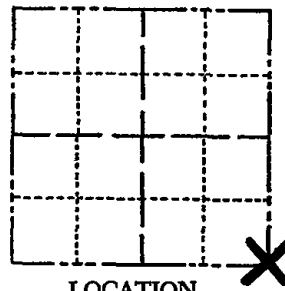
STATE PLANE COORDINATES: N _____
E _____

ELEVATION — M.S.L. DATUM: _____

THETA ANGLE: _____

FIELD BOOK: _____ PAGE _____

CORNER NO. 408
SECTION 31
TOWN 16
RANGE 7



LOCATION
(Indicated by 'X')

BASIS FOR MONUMENT LOCATION

(Use reverse side if necessary)

Show info such as: History of corner, with reference to Vol. and pg, dates, surveyor; exact description of monument replaced; if location computed, by taped or EDM traverse; landowner remarks, etc.

SEAL:

Found two 2" Iron Pipes side by side.

Monumented the one to match the tie to Luella Wood Subdivision, the first of the adjacent surveys.

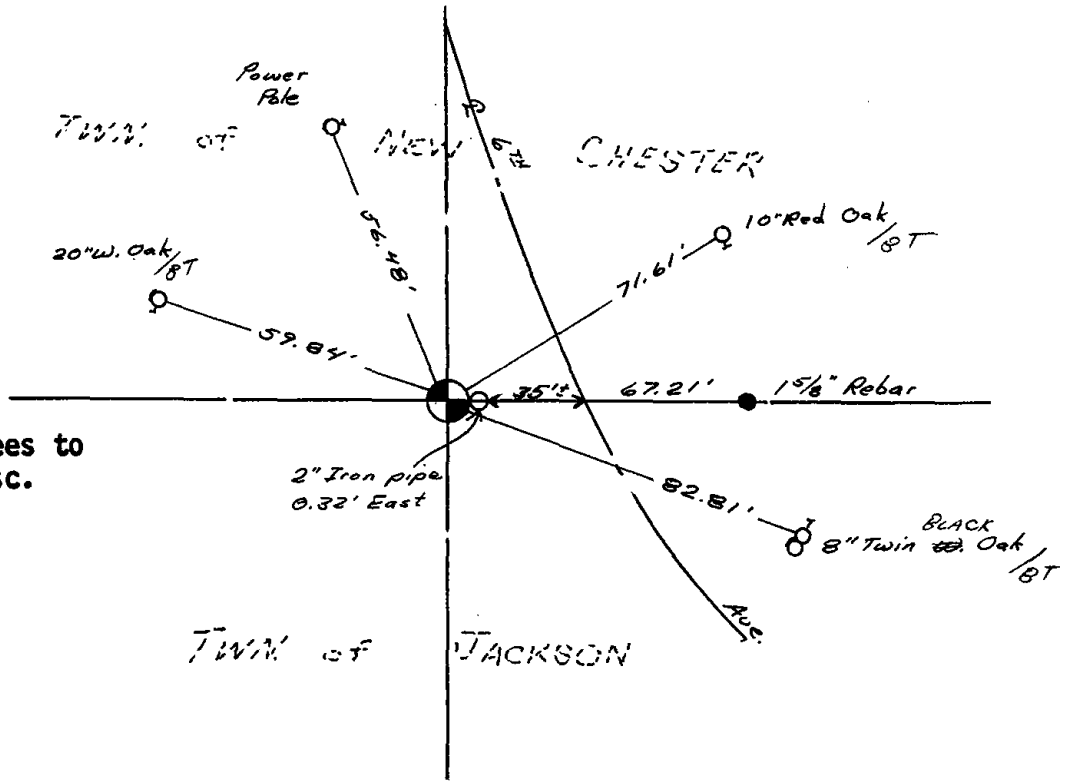


Everything O.k.	10-28-76	RN-SS
" "	4-13-82	GR-SS
" "	12-9-86	" "
" "	12-26-91	KZ-CR
" "	1-15-97	JG-SS
" "	1-09-02	ML
" "	1-30-07	JG-SS
OK 01-20-12	MS	

CERTIFIED CORRECT:
Dale C Hagen
Registered Land Surveyor
DATE: June 1, 1976

TIE SKETCH

(Show at least four ties)



NOTE: Ties in trees to nail in disc.