

PUBLIC LAND SURVEY MONUMENT RECORD

TYPE OF MONUMENT: HARRISON
 ADAMS COUNTY COORDINATES, NAD 83 (2007)

N. 224155.267

E. 525654.090

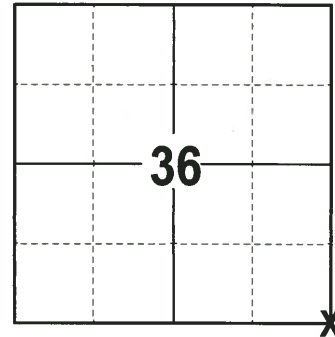
ELEVATION- _____ DATUM _____

FIELD WORK DATE: 06/15/2017

BASIS FOR MONUMENT LOCATION

1981- PLS 878 NO RESURVEYS OF RECORD. TALKED TO ADJACENT LANDOWNER WAYNE JEFFERSON. HE THOUGHT THE CORNER WAS MARKED BY A PIPE. I FOLLOWED A OLD FENCE UNTIL I FOUND WHERE THE WIRE WAS WRAPPED AROUND THE POST. SEARCHED THE AREA AND FOUND A 3/4 X 18" IRON PIPE STUCK INTO THE ROTTEN REMAINS OF A CORNER POST. REPLACED PIPE WITH HARRISON MONUMENT. VERIFIED CORNER LOCATION BY TRAVERSING A MILE EAST, WEST AND SOUTH OF CORNER.

2017 - PLS 2994 FOUND EXISTING HARRISON MONUMENT AT THE GROUND SURFACE AND 3 WITNESSES. THE MONUMENT AGREES WITH THE EXISTING WITNESSES. ACCEPTED THE HARRISON AS CORNER LOCATION AND SET 4 NEW TIES.



LOCATION
 (INDICATE CORNER BY "X")

SEAL:

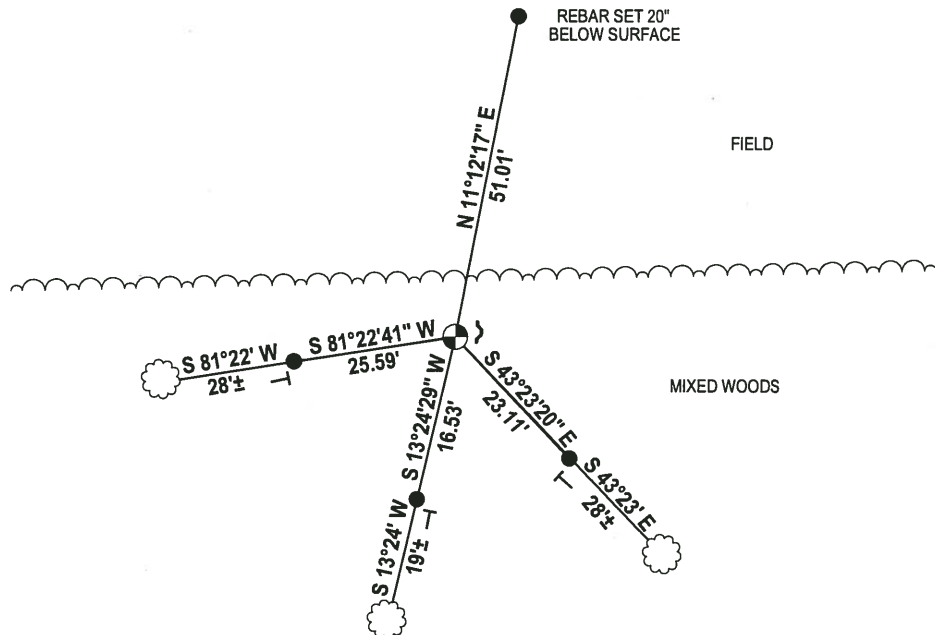
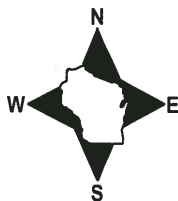


DATA SHOWN HERE ON THIS TIE SHEET IS CORRECT AND COMPLETE TO THE BEST OF MY KNOWLEDGE AND BELIEF.

PROFESSIONAL LAND SURVEYOR

DATE 6/26/17

- TIE SKETCH



- 3/4" x 18" IRON REBAR SET, 1.50#/FT
- ⊙ HARRISON FOUND
- ~ STEEL FENCE POST
- ┊ VINYL "T" POST
- ☁ WITNESS TREE FOUND

Government Land Corner Certificate

Adams County

TYPE OF MONUMENT: Harrison

STATE PLANE COORDINATES: N _____
E _____

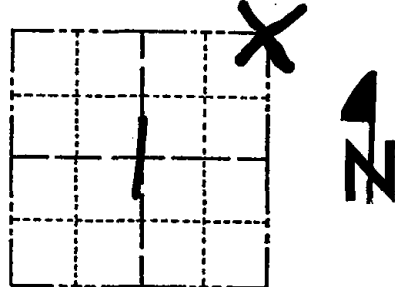
ELEVATION — M.S.L. DATUM: _____

THETA ANGLE: _____

FIELD BOOK: 86 PAGE 108

DRAWN BY: T.H

CORNER NO. 13
SECTION 1
TOWN 17
RANGE 5



LOCATION
(Indicated by 'X')

BASIS FOR MONUMENT LOCATION

Show info such as: History of corner, with reference to Vol. and pg., dates, surveyor; exact description of monument replaced; if location computed, by taped or EDM traverse; landowner remarks, etc. (Use reverse side if necessary)

No resurveys of record. Talked to adjacent landowner Wayne Jefferson. He thought the corner was marked by a pipe. I followed very old down fence until I found loops in the wire, where it had been wrapped around a corner post. Searched the area and found a 3/4" x 18" iron pipe stuck into what appeared to be the rotted remains of a corner post. Replaced pipe with Harrison monument, after verifying location by EDM T-2 traverse a mile east, west and south of here.

SEAL:



DATA SHOWN HERE ON
CERTIFIED CORRECT:

Anthony B. Kiedrowski
Registered Land Surveyor

DATE: 1/3/81

MON. OK; 1-NEW 8-24-90 8-24-90 SS-JG
1-NEW TIE 28-94CR-JG
2 GONE
1-GONE, 1-NEW, 4-8-05, JG

TIE SKETCH

Show at least four ties, also fence lines, roads, topo, size and type of witness trees and if off road - best way to arrive at corner.

