

PUBLIC LAND SURVEY MONUMENT RECORD

TYPE OF MONUMENT: RAILROAD SPIKE
 ADAMS COUNTY COORDINATES, NAD 83 (2007)

N. 221256.988

E. 499341.679

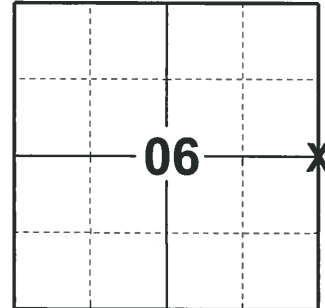
ELEVATION- - - - DATUM - - - -

FIELD WORK DATE: 01/15/2019

BASIS FOR MONUMENT LOCATION

1971 - PLS 981 FOUND IRON PIPE AND "RR" SPIKE AND SET HARRISON MONUMENT

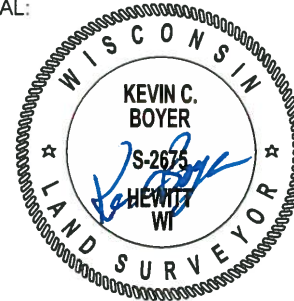
2019 - PLS 2675 FOUND RAILROAD SPIKE 3" BELOW ROAD SURFACE AND 1 WITNESS. THE MONUMENT AGREES WITH THE WITNESS. ACCEPTED THE RAILROAD SPIKE AS THE CORNER. SET 4 NEW TIES AND MEASURED TO THE EXISTING WITNESS.



LOCATION

(INDICATE CORNER BY "X")

SEAL:



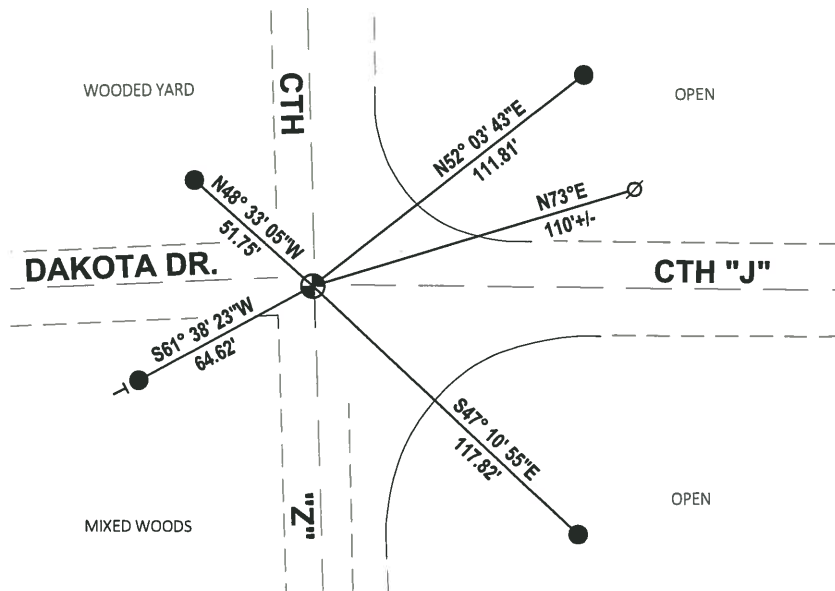
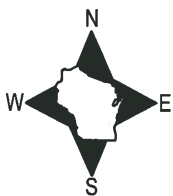
DATA SHOWN HERE ON THIS TIE SHEET IS CORRECT AND COMPLETE TO THE BEST OF MY KNOWLEDGE AND BELIEF.

PROFESSIONAL LAND SURVEYOR

DATE 3/12/19

- TIE SKETCH

NOTE: THE CORNERS LANDS 0.50'± WEST OF CENTERLINE OF CTH "Z"



- SET 3/4" x 18" IRON REBAR, 1.50#/FT
- ⊕ FOUND RAILROAD SPIKE
- ∅ WITNESS POWER POLE
- VINYL "T" POST

ADAMS COUNTY

Survey Monument Record

TYPE OF MONUMENT: 30" HARRISON

STATE PLANE COORDINATES: N _____

E _____

ELEVATION — M.S.L. DATUM: _____

THETA ANGLE: _____

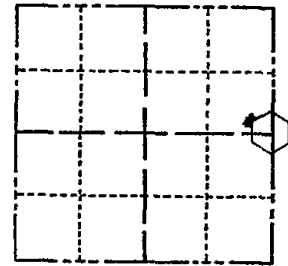
FIELD BOOK: 104 PAGE 57

CORNER NO. 25

SECTION 6

TOWN 17

RANGE 5



LOCATION (Indicated by 'X')

SEAL:

BASIS FOR MONUMENT LOCATION

(Use reverse side if necessary)

Show info such as: History of corner, with reference to Vol. and pg, dates, surveyor; exact description of monument replaced; if location computed, by taped or EDM traverse; landowner remarks, etc.

Found iron pipe and "RR" spike and set monument

July 21, 1971

Sam T. Mullen R.L.S. S-981

OK 9-2-10 SS
OK 2-15-05 DA/JG
3 NEW TIES 11-27-00 JB-SS
CORNER 10-3-75
MON & TIES OK KU-SK 9/26/80
ALL OK 5/30/85 D.K
OK 1-30-90 KZ-SS
ALL OK 8-17-94 JG-SS

CERTIFIED CORRECT:

Registered Land Surveyor

DATE: _____

TIE SKETCH

(Show at least four ties)

