

## PUBLIC LAND SURVEY MONUMENT RECORD

TYPE OF MONUMENT: SURVEY NAIL  
 ADAMS COUNTY COORDINATES, NAD 83 (2007)

N. 221274.964

E. 509949.391

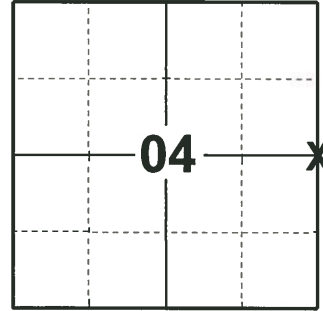
ELEVATION- - - - - DATUM - - - - -

FIELD WORK DATE: 01/15/2019

### BASIS FOR MONUMENT LOCATION

1975 - PLS 922 CORNER WAS RE-ESTABLISHED BY RETRACING THE UNRECORDED PLAT OF SHADYBROOK, WHICH WAS SURVEYED IN 1966 BY C.H. PERRY OF MARSHFIELD.

2019 - PLS 2675 FOUND MAGNAIL IN ROAD SURFACE, 4 TIES, AND 1 WITNESS. PER PVIOUS TIE SHEET, THE HARRISON THAT WAS SET IN 1975 WAS DISTURB DURING ROAD CONSTRUCTION. THE MAGNAIL LOCATION AGREES WITH ALL 4 TIES AND WITNESS. ACCEPTED THE MAGNAIL LOCATION AS THE CORNER. . RE-SET A SURVEY NAIL IN THE MAGNAIL LOCATION. SET 2 TIES. MEASURED TO THE EXISTING TIES AND WITNESS.



LOCATION

(INDICATE CORNER BY "X")

SEAL:



DATA SHOWN HERE ON THIS TIE SHEET IS CORRECT AND COMPLETE TO THE BEST OF MY KNOWLEDGE AND BELIEF.

PROFESSIONAL LAND SURVEYOR

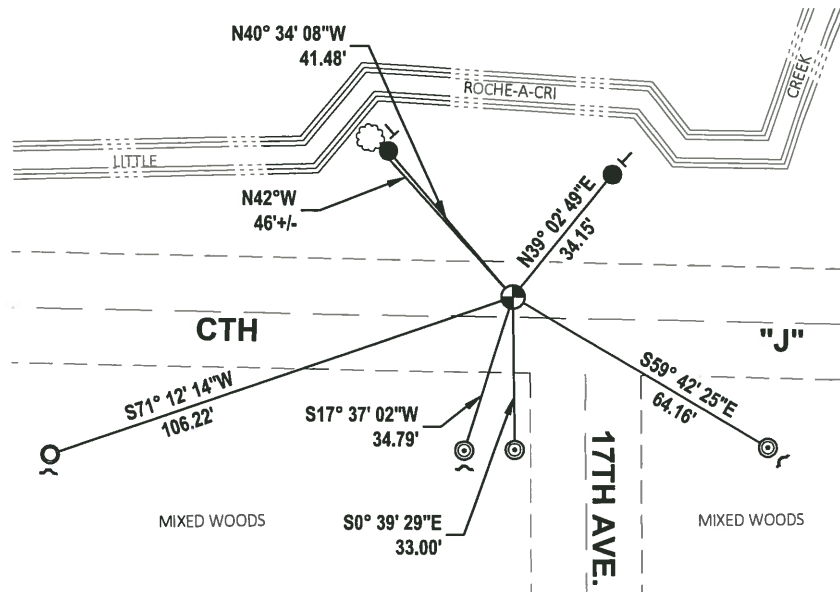
DATE 3/12/19

### TIE SKETCH

NOTE: THE CORNER LANDS 4.5± NORTH OF CENTERLINE OF CTH "J" AND 16.5± WEST OF THE CENTERLINE OF 17TH AVE.



- SET 3/4" x 18" IRON REBAR, 1.50#/FT
- ◎ FOUND 2-3/8" O.D. IRON PIPE
- FOUND 1-1/4" O.D. IRON PIPE
- ⊕ FOUND SURVEY NAIL
- ~ STEEL FENCE POST
- VINYL "T" POST
- ☼ WITNESS TREE



ADAMS COUNTY

Survey Monument Record

TYPE OF MONUMENT: 30" HARRISON MARKER

STATE PLANE COORDINATES: N \_\_\_\_\_

E \_\_\_\_\_

ELEVATION — M.S.L. DATUM: \_\_\_\_\_

THETA ANGLE: \_\_\_\_\_

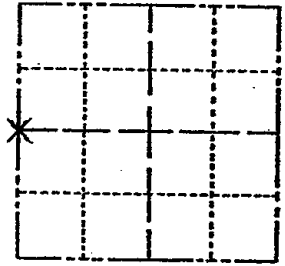
FIELD BOOK: \_\_\_\_\_ PAGE \_\_\_\_\_

CORNER NO. 600 <sup>(17)</sup>

SECTION 3

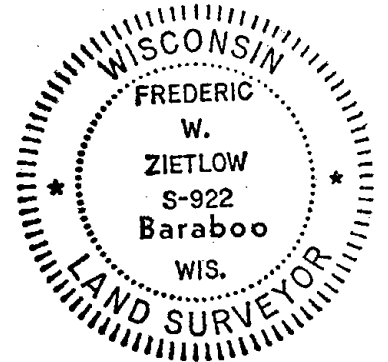
TOWN 17 N

RANGE 5 E



LOCATION (Indicated by 'X')

SEAL:



BASIS FOR MONUMENT LOCATION

(Use reverse side if necessary)

Show info such as: History of corner, with reference to Vol. and pg. dates, surveyor; exact description of monument replaced; if location computed, by taped or EDM traverse; landowner remarks, etc.

THIS CORNER WAS RE-ESTABLISHED BY RETRACING THE UNRECORDED PLAT OF SHADYBROOK, WHICH WAS SURVEYED IN 1966 BY C.H. PERRY OF MARSHFIELD.

TIES, BT + COR OK BS-KU 9/29/85

Ties + MON OK 5/29/85 D.K.

OK 1-30-90 KZ-SS

ALL OK 8-17-94 SS-JG

11-27-00 JG-SS - CAUTION - SET MAG NAIL FROM 4 PIPE TIES - CHECK SURVEY FILES HAR. MAY HAVE BEEN DISTURBED - CONSTRUCTION LOCATOR "BEEPS" ± 1' EAST

OK 2-15-05 DA/JG

12-17-10 CAUTION - MAG NAIL GONE

CERTIFIED CORRECT:

*Frederic W. Zietlow*

Registered Land Surveyor

DATE: APRIL 30, 1975

TIE SKETCH

(Show at least four ties)

CREEK

