

03  
SECTION

17  
TOWN

05  
RANGE

# ADAMS COUNTY

COUNTY CORNER NO.: 18

ROMPORTOL ID: 41705032000

## PUBLIC LAND SURVEY MONUMENT RECORD

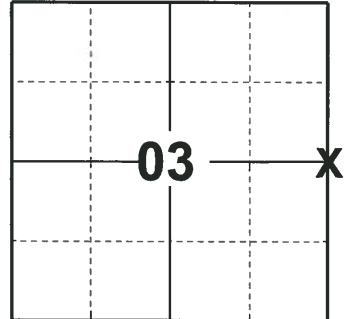
TYPE OF MONUMENT: HARRISON  
ADAMS COUNTY COORDINATES, NAD 83 (2007)

N. 221234.513

E. 515227.884

ELEVATION-        DATUM       

FIELD WORK DATE: 12/20/2018



### LOCATION

(INDICATE CORNER BY "X")

### BASIS FOR MONUMENT LOCATION

1975 - PLS 922 FOUND PARKER-KALON MASONRY NAIL AT INTERSECTION OF CENTERLINES OF CTH J AND 16TH AVE. FIT E.D.M. TRAVERSE OF ADJACENT SECTIONS GOOD. USED E.D.M. TRAVERSE.

2018 - PLS 2675 FOUND A MAG NAIL IN THE ROAD SURFACE AND 1 TIE. REMOVED THE MAG NAIL AND FOUND A HARRISON MONUMENT 18" BELOW. THE MONUMENT AGREES WITH THE EXISTING TIE. ACCEPTED THE HARRISON MONUMENT AS THE CORNER LOCATION. SET 3 NEW TIES AND MEASURED TO THE TIES.

SEAL:



DATA SHOWN HERE ON THIS TIE SHEET IS CORRECT AND COMPLETE TO THE BEST OF MY KNOWLEDGE AND BELIEF.

PROFESSIONAL LAND SURVEYOR

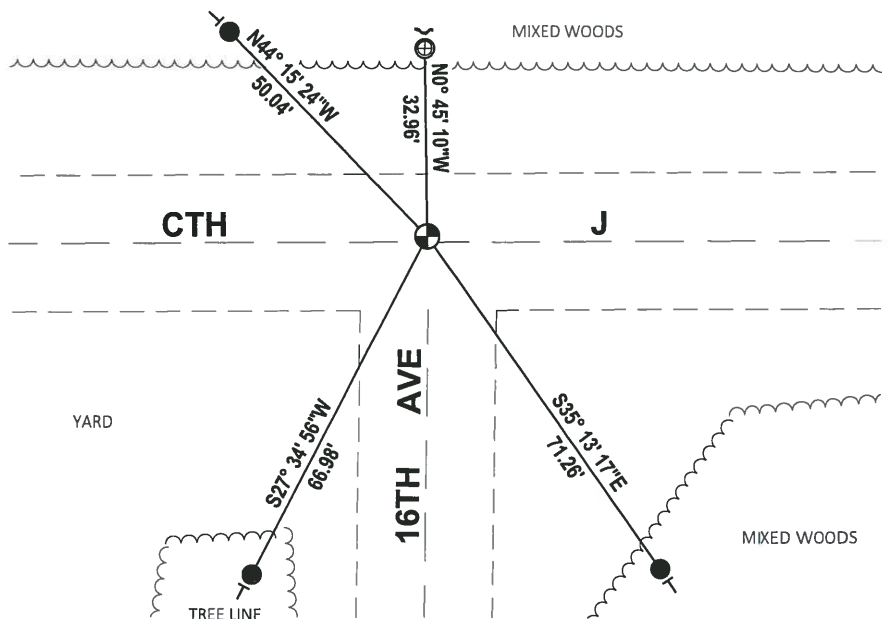
DATE 1-18-19

### - TIE SKETCH

NOTE: THE CORNER FALLS 1± NORTH OF THE CENTERLINE OF CTH J.



- SET 3/4" x 18" IRON REBAR, 1.50#/FT
- FOUND 3/4" IRON ROD
- ⊕ FOUND 1.00" O.D. IRON PIPE
- ⊙ FOUND HARRISON MONUMENT
- ↙ STEEL FENCE POST
- ↔ VINYL "T" POST



# ADAMS COUNTY

## Survey Monument Record

TYPE OF MONUMENT: HARRISON. MONUMENT

STATE PLANE COORDINATES: N \_\_\_\_\_

E \_\_\_\_\_

ELEVATION — M.S.L. DATUM: \_\_\_\_\_

THETA ANGLE: \_\_\_\_\_

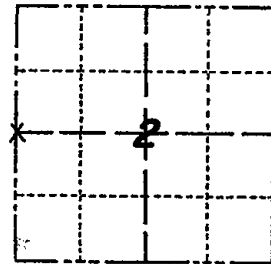
FIELD BOOK: \_\_\_\_\_ PAGE \_\_\_\_\_

CORNER NO. 602 <sup>18</sup>

SECTION 2

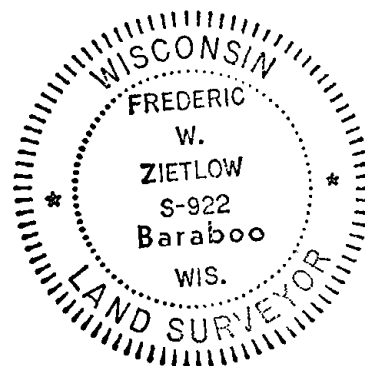
TOWN 17

RANGE 5



LOCATION  
(Indicated by 'X')

SEAL:



### BASIS FOR MONUMENT LOCATION

(Use reverse side if necessary)

Show info such as: History of corner, with reference to Vol. and pg, dates, surveyor; exact description of monument replaced; if location computed, by taped or EDM traverse; landowner remarks, etc.

Found parker-kalon masonry nail at intersection of centerlines of C.T.H. "J" and 16th Avenue. Fit E.D.M. traverse of adjacent sections good. Used E.D.M. traverse.

mon + Ties OK 5/29/85 D.K.

HARRISON OK 1-29-90 KZ-SS

CERTIFIED CORRECT:

*Frederic W. Zietlow*

Registered Land Surveyor

DATE: JAN. 29, 1975

CORNER O.K. 5/29/85 D.K. 1-29-90  
MON + TIES OK 8/27/80 RN-TJH  
ALL OK 8-17-94 JG-SS

### TIE SKETCH

NOTE: BURIED ABOUT 8"

(Show at least four ties)

5-NEW TIES, 2-7-00, JG-SS

OK 2-7-05 - JG  
TIES OK 2-12-10

