

PUBLIC LAND SURVEY MONUMENT RECORD

TYPE OF MONUMENT: CALCULATED POSITION
ADAMS COUNTY COORDINATES, NAD 83 (2007)

N. 218586.200

E. 499440.290

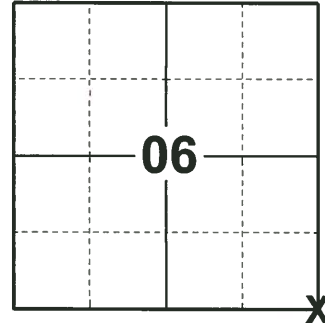
ELEVATION: _____ DATUM _____

FIELD WORK DATE: 01/15/2019

BASIS FOR MONUMENT LOCATION

1983 - PLS 1478 THIS MONUMENT IS A WITNESS TO THE ACTUAL LOCATION OF THE SOUTHEAST CORNER OF SECTION 6. THE CORNER FALLS 200' NORTH OF THE WITNESS IN THE BIG ROCHE A CRI CREEK. THIS LOCATION OF THE CORNER WAS DETERMINED BY RETRACING SURVEYS BY M.C. SMITH AND HUGH HURLEY (BOTH PREVIOUS ADAMS COUNTY SURVEYORS) IN THE SE1/4 OF SECTION 6-17-5. THIS LOCATION ALSO FIT WELL WITH SURVEYS DONE BY F. ZIETLOW AND ROBERT KLIEN IN THE NW 1/4 OF SECTION 8-17-5.

2019 - PLS 2675 FOUND THE 1-1/4" MEANDER CORNER, VERIFIED BY THE REMAINING WITNESS, AND A DISTANCE DOWN TO THE E1/4 OF SECTION 7. ACCEPTED THE 1-1/4" IRON ROD AS THE MEANDER CORNER. SET 3 NEW TIES AND MEASURED TO A FOUND PROPERTY IRON. CALCULATED THE CORNER POSITION BY HOLDING A STRAIGHT LINE FROM THE E1/4 OF SECTION 7 TO THE MEANDER CORNER AND EXTENDING THE RECORDED DISTANCE OF 200.00' TO CREATE THE CORNER.



LOCATION

(INDICATE CORNER BY "X")

SEAL:



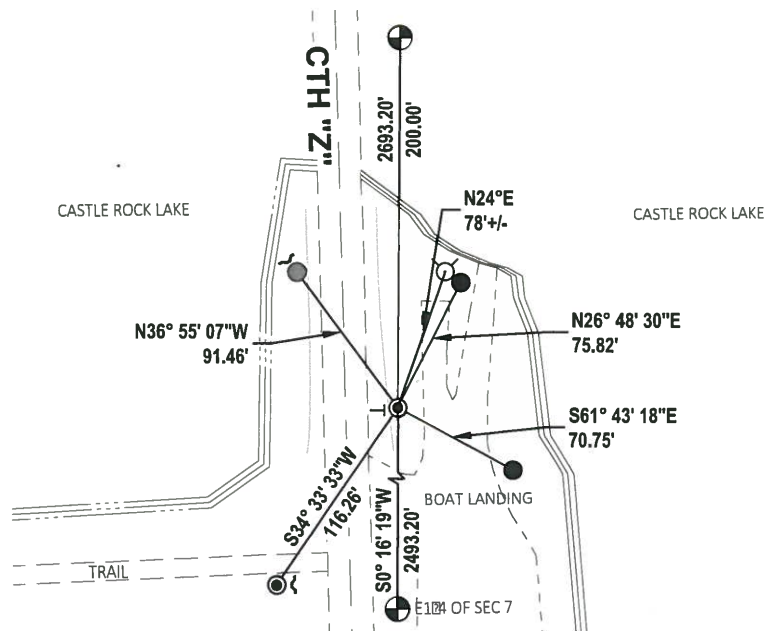
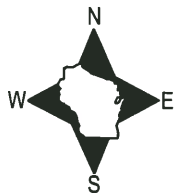
DATA SHOWN HERE ON THIS TIE SHEET IS CORRECT AND COMPLETE TO THE BEST OF MY KNOWLEDGE AND BELIEF.

PROFESSIONAL LAND SURVEYOR

DATE 3/12/19

TIE SKETCH

NOTE: THE CORNER LANDS 29± EAST OF CENTERLINE OF CTH "Z"

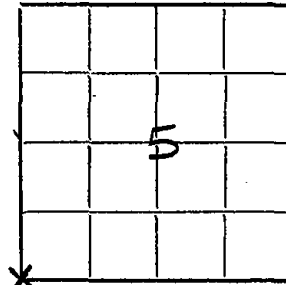


- SET 3/4" x 18" IRON REBAR, 1.50#/FT
- ⊙ FOUND 1-1/4" O.D. IRON ROD
- ⊕ CALCULATED POSITION
- ┌ STEEL FENCE POST
- └ VINYL "T" POST

PRESERVATION OF MONUMENTS

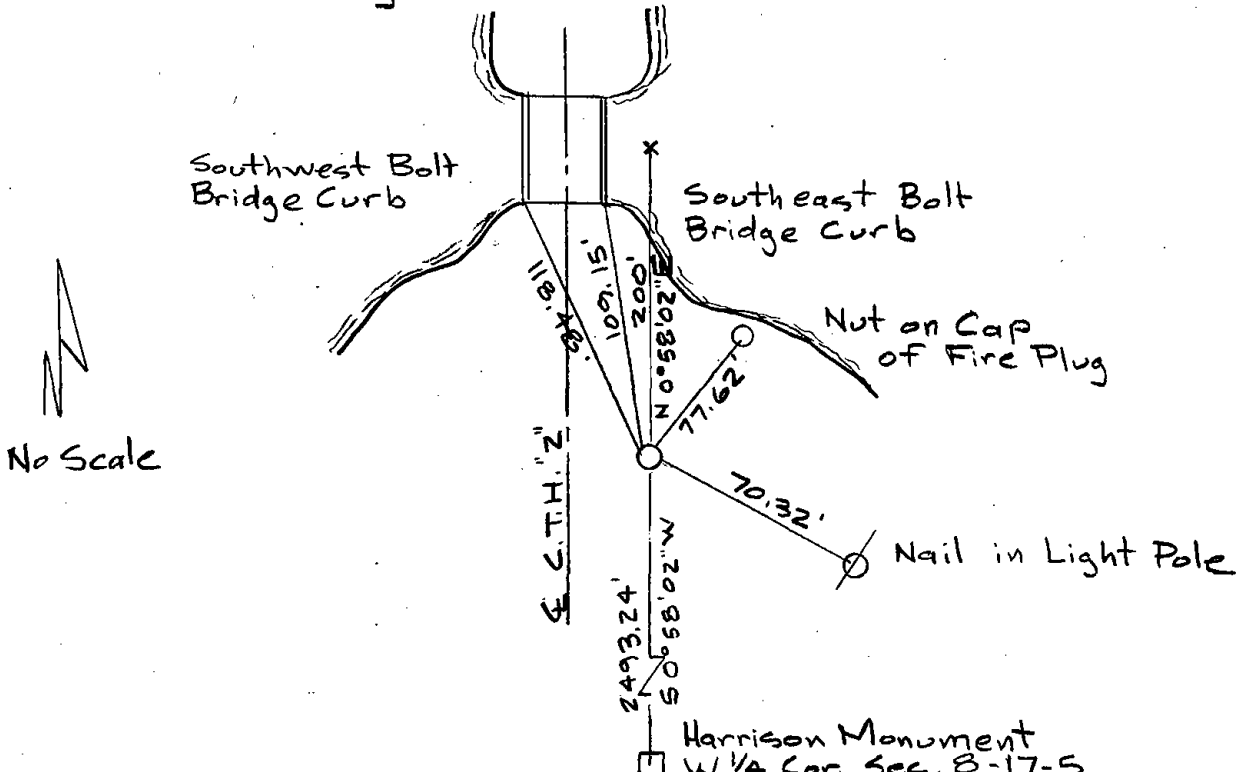
SECTION 59,635 WISCONSIN STATUTES

County Adams
 Town Strongs Prairie
 Highway C.T.H. "Z"
 Section No. 5
 T. 17 N. R. 5 W. E.
 Type of Monument 1 1/4" Iron Bar
 Location indicated on sketch -X-



LOCATION SKETCH

Note: Monument is witness monument. Actual corner is 200' N in flowage.



This space for copy of field notes or ties to the above described monuments.

Field notes or records filed in Book No. Adams Co. C.T.H. "J" Project
 at the Ayres Associates office.
 of Eau Claire County.
 Located or established by H. Warden, J. Denzing RLS March, 1991
 Title James W. Denzing 51129

County Clerk's Office.....County, Wis.) ss.
 Received for record....., 19.....

Copy sent to County Surveyor....., 19.....

County Clerk