

## PUBLIC LAND SURVEY MONUMENT RECORD

TYPE OF MONUMENT: HARRISON  
 ADAMS COUNTY COORDINATES, NAD 83 (2007)

N. 218509.784

E. 502079.235

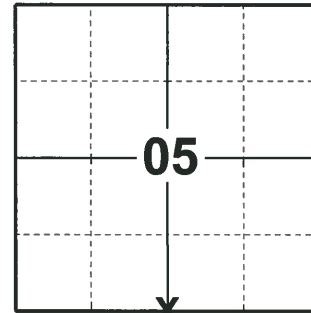
ELEVATION-      DATUM     

FIELD WORK DATE: 01/15/2019

### BASIS FOR MONUMENT LOCATION

1975 - PLS 1103 TRAVERSED SECTION 8 WITH EDM AND TRANSIT TO DETERMINE SEARCH AREAS FOR INVESTIGATION. FOUND REMAINS OF OLD DRIVEN POST ON EAST-WEST FENCE LINE, BUT COULD NOT AUTHENTICATE AS ORIGINAL POST OR REMONUMENTATION OF THE ORIGINAL CORNER. ACCEPTED POST AS BEST EVIDENCE OF THE LOCATION OF THE CORNER AND MONUMENT SAME.

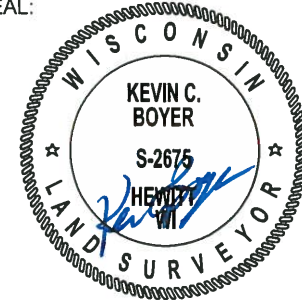
2019 - PLS 2675 FOUND HARRISON FLUSH WITH THE GROUND AND DID NOT RECOVER ANY TIES OR WITNESSES DUE TO LOGGING. ACCEPTED THE HARRISON AS THE CORNER. SET 4 NEW TIES AND MEASURED TO A FOUND PROPERTY IRON.



**LOCATION**

(INDICATE CORNER BY "X")

SEAL:



DATA SHOWN HERE ON THIS TIE SHEET IS CORRECT AND COMPLETE TO THE BEST OF MY KNOWLEDGE AND BELIEF.

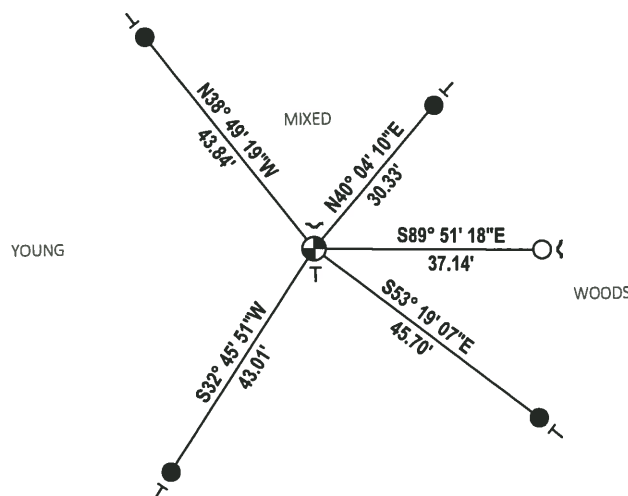
PROFESSIONAL LAND SURVEYOR

DATE 3/12/19

### TIE SKETCH



- SET 3/4" x 18" IRON REBAR, 1.50#/FT
- FOUND 3/4" IRON ROD
- ⊕ FOUND HARRISON MONUMENT
- ↙ STEEL FENCE POST
- ┌ VINYL "T" POST



**ADAMS COUNTY**

**Survey Monument Record**

TYPE OF MONUMENT: Standard Harrison

STATE PLANE COORDINATES: N \_\_\_\_\_

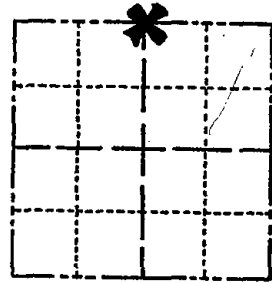
E \_\_\_\_\_

ELEVATION — M.S.L. DATUM: \_\_\_\_\_

THETA ANGLE: \_\_\_\_\_

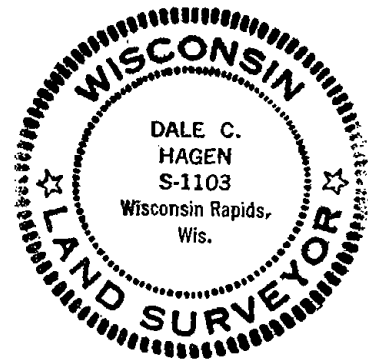
FIELD BOOK: \_\_\_\_\_ PAGE \_\_\_\_\_

CORNER NO. 845 (24)  
 SECTION 8  
 TOWN 17  
 RANGE 5



LOCATION  
(Indicated by 'X')

SEAL:



**BASIS FOR MONUMENT LOCATION**

(Use reverse side if necessary)

Show info such as: History of corner, with reference to Vol. and pg, dates, surveyor; exact description of monument replaced; if location computed, by taped or EDM traverse; landowner remarks, etc.

Traversed Section 8 with EDM and transit to determine search areas for investigation.

Found remains of old driven post on East-West fence line, but could not authenticate as original post or re-monumentation of the original corner.

Accepted post as best evidence of the location of the corner and monumented same.

TIES & MON OK BS  
 ALL OK - 7-8-85 SS-DK  
 1 NEW TIE 1-30-90 KZ-SS  
 1-GONE, 2-NEW 8-17-94 JG-BS  
 ALL NEW TIES 2-11-05 DA-JG  
 3 GOOD TIES - 2 POSTS/SIGN @ COR 2-24-10 SS

CERTIFIED CORRECT:

*Dale C. Hagen*

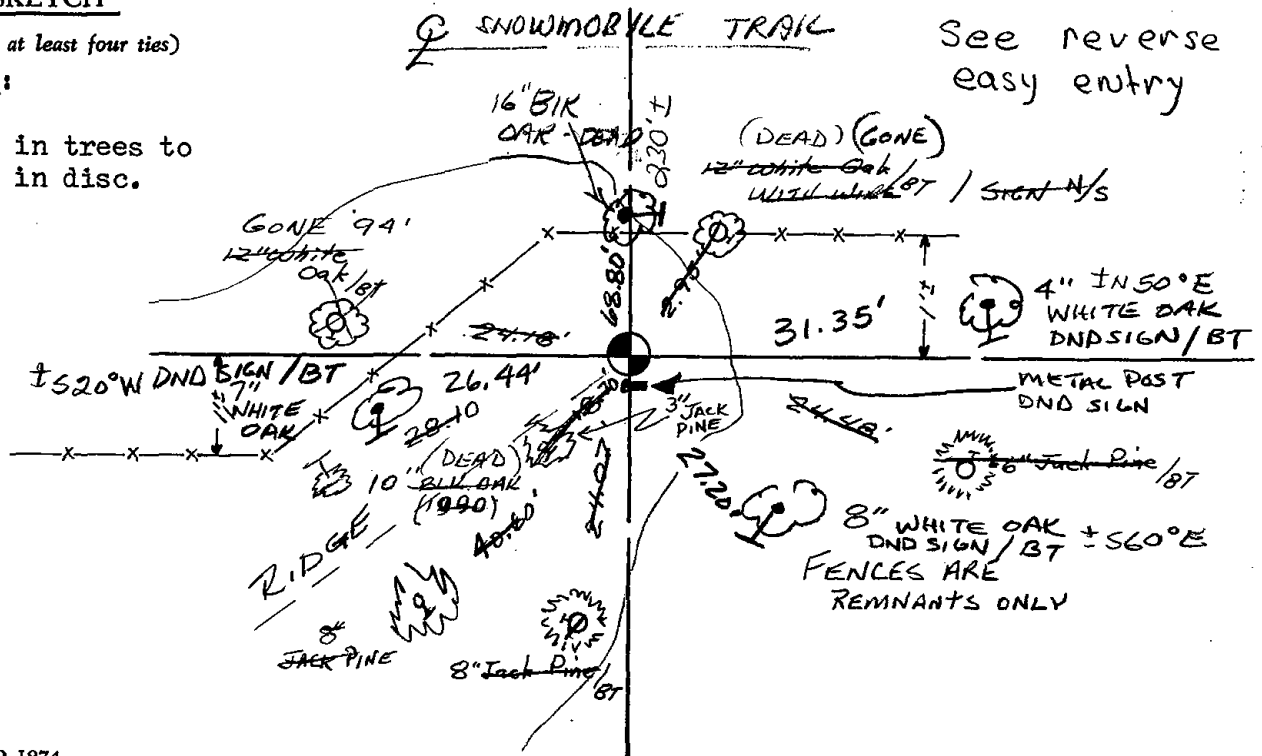
Registered Land Surveyor  
 DATE: December 2, 1975

**TIE SKETCH**

(Show at least four ties)

NOTE:

Ties in trees to nail in disc.



↑  
N  
Bait  
Store

