

PUBLIC LAND SURVEY MONUMENT RECORD

TYPE OF MONUMENT: HARRISON (BROKEN-TOP)
 ADAMS COUNTY COORDINATES, NAD 83 (2007)

N. 215954.232

E. 515213.864

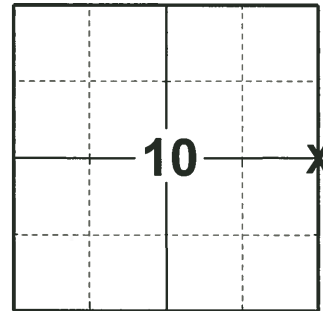
ELEVATION- - - - DATUM - - - -

FIELD WORK DATE: 01/15/2019

BASIS FOR MONUMENT LOCATION

1977 - PLS 1103 RAN EDM/T2 TRAVERSE AROUND SECTION 11 AND THE WEST LINE OF SECTION 14 TO DETERMINE SEARCH AREA FOR INVESTIGATION. EXCAVATION WITH BACKHOE YIELDED NO EVIDENCE OF THE ORIGINAL CORNER OR ANY REMONUMENTATION. COULD FIND NO BEARING TREES. RELOCATED CORNER HALF WAY AND ON LINE BETWEEN THE NORTHWEST AND SOUTHWEST CORNERS OF SECTION 11.

2019 - PLS 2675 FOUND HARRISON (BROKEN-TOP) 16" BELOW THE ROAD SURFACE AND 1 WITNESS. THE MONUMENT AGREES WITH THE WITNESS. ACCEPTED THE HARRISON (BROKEN-TOP) AS THE CORNER. SET 4 NEW TIES AND MEASURED TO THE EXISTING WITNESS.



LOCATION

(INDICATE CORNER BY "X")

SEAL:



DATA SHOWN HERE ON THIS TIE SHEET IS CORRECT AND COMPLETE TO THE BEST OF MY KNOWLEDGE AND BELIEF.

PROFESSIONAL LAND SURVEYOR

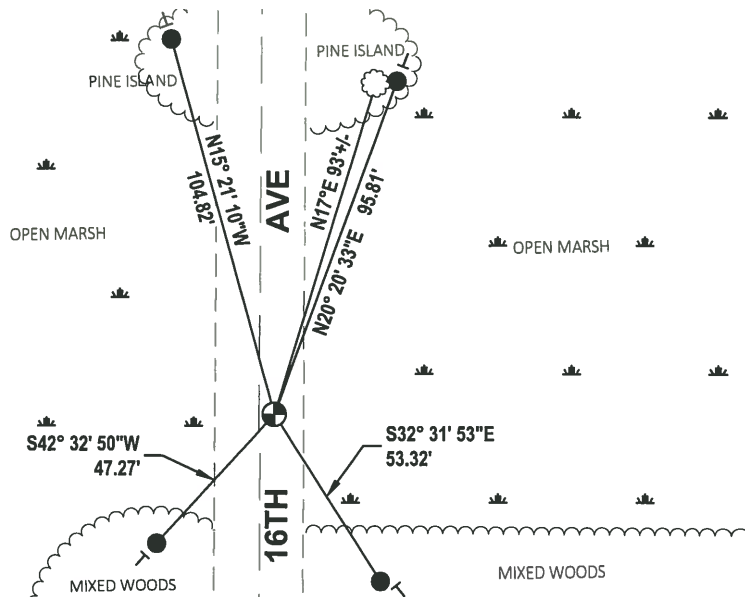
DATE 3/12/19

TIE SKETCH

NOTE: THE CORNER LANDS 4'± EAST OF CENTERLINE OF 16TH AVE.



- SET 3/4" x 18" IRON REBAR, 1.50#/FT
- ⊕ FOUND HARRISON MONUMENT (BROKEN TOP)
- ┊ VINYL "T" POST
- ☁ WITNESS TREE



ADAMS COUNTY

Survey Monument Record

TYPE OF MONUMENT: Harrison Standard

STATE PLANE COORDINATES: N _____

E _____

ELEVATION — M.S.L. DATUM: _____

THETA ANGLE: _____

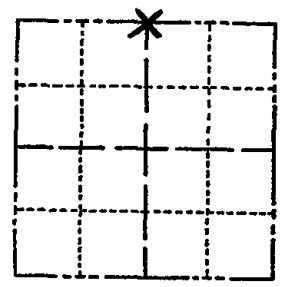
FIELD BOOK: _____ PAGE _____

CORNER NO. 421

SECTION 12

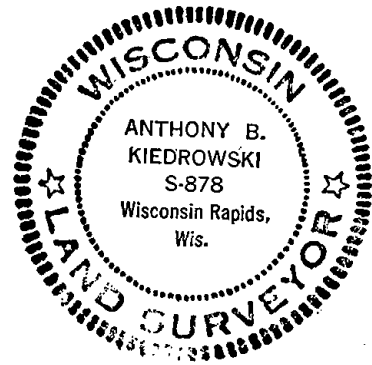
TOWN 17

RANGE 5



LOCATION
(Indicated by 'X')

SEAL:



BASIS FOR MONUMENT LOCATION

(Use reverse side if necessary)

Show info such as: History of corner, with reference to Vol. and pg, dates, surveyor; exact description of monument replaced; if location computed, by taped or EDM traverse; landowner remarks, etc.

Excavated with backhoe. Found triangular shaped sandstone 8" wide and 14" long. Bearing tree marked by M. C. Smith still standing. Lowered stone and set Harrison on top.

COR. O.K. 10-11-75 S.S.
MON OK-RETIED RN-TM
8/29/80

ALL OK 5/30/85
OK 2-5-90 KZ-SS
OK 8-8-94 CR-JG
OK 2-14-00 SS
" 12-15-10 SS

D.K.
CERTIFIED CORRECT:
Anthony B. Kiedrowski
Registered Land Surveyor
DATE: July 31, 1974

TIE SKETCH

All ties to nail and disc.

(Show at least four ties)

