

11
SECTION

17
TOWN

05
RANGE

ADAMS COUNTY

COUNTY CORNER NO: 39

ROMPORTOL ID: 41705112000

PUBLIC LAND SURVEY MONUMENT RECORD

TYPE OF MONUMENT: HARRISON (BROKEN-TOP)
ADAMS COUNTY COORDINATES, NAD 83 (2007)

N. 216054.442

E. 520482.625

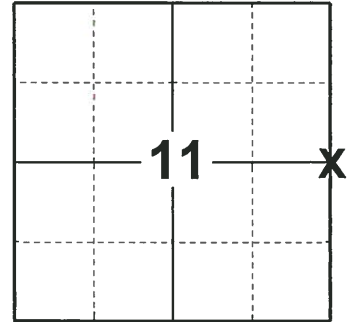
ELEVATION- DATUM

FIELD WORK DATE: 12/20/2018

BASIS FOR MONUMENT LOCATION

1974 - PLS 878 EXCAVATED AREA WITH A BACKHOE AND FOUND NO EVIDENCE. SET THE CORNER 33' EAST OF EXISTING 1" IRON PIPE. SET A HARRISON MONUMENT AT THE CORNER AND TIED OUT.

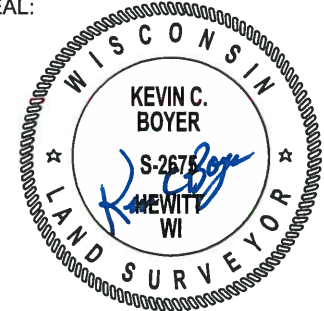
2019 - PLS 2675 FOUND A HARRISON MONUMENT WITH A BROKEN-TOP 10" BELOW THE ROAD SURFACE AND 1 TIE. THE MONUMENT AGREES WITH THE EXISTING TIE. ACCEPTED THE HARRISON MONUMENT WITH A BROKEN-TOP AS THE CORNER LOCATION. SET 3 NEW TIES AND MEASURED TO THE TIES.



LOCATION

(INDICATE CORNER BY "X")

SEAL:



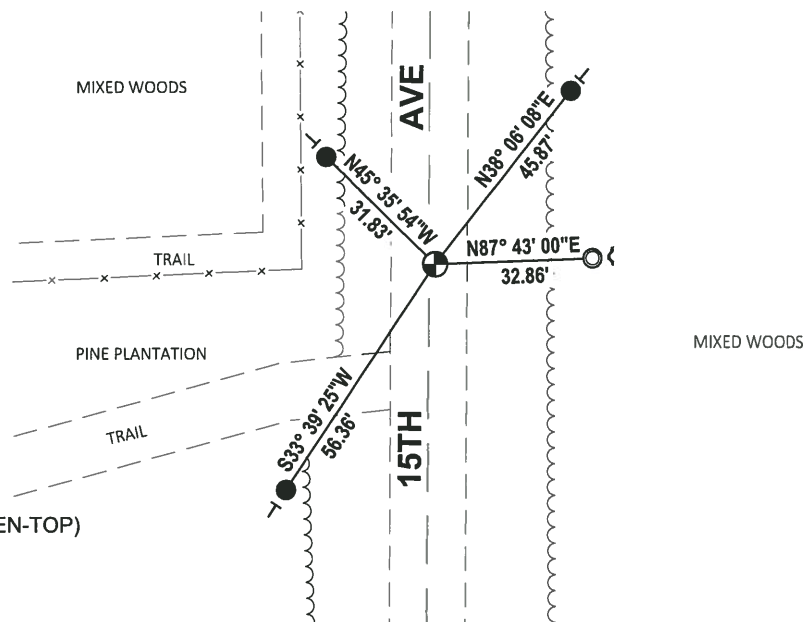
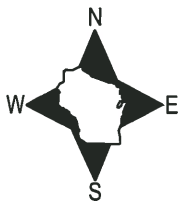
DATA SHOWN HERE ON THIS TIE SHEET IS CORRECT AND COMPLETE TO THE BEST OF MY KNOWLEDGE AND BELIEF.

PROFESSIONAL LAND SURVEYOR

DATE 1-18-19

- TIE SKETCH

NOTE: THE CORNER FALLS 3± EAST OF THE CENTERLINE OF 15TH AVE.



- SET 3/4" x 18" IRON REBAR, 1.50#/FT
- FOUND 1-1/4" O.D. IRON PIPE
- ⊙ FOUND HARRISON MONUMENT (BROKEN-TOP)
- ┌ STEEL FENCE POST
- └ VINYL "T" POST

ADAMS COUNTY

Survey Monument Record

TYPE OF MONUMENT: Harrison Standard

STATE PLANE COORDINATES: N _____

E _____

ELEVATION — M.S.L. DATUM: _____

THETA ANGLE: _____

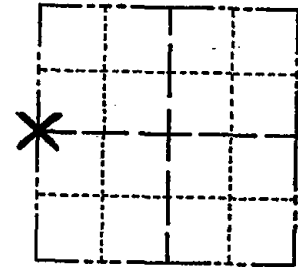
FIELD BOOK: _____ PAGE _____

CORNER NO. 423 ³⁹

SECTION 12

TOWN 17

RANGE 5



LOCATION
(Indicated by 'X')

SEAL:



BASIS FOR MONUMENT LOCATION

(Use reverse side if necessary)

Show info such as: History of corner, with reference to Vol. and pg, dates, surveyor; exact description of monument replaced; if location computed, by taped or EDM traverse; landowner remarks, etc.

Excavated area with backhoe. Found no evidence. Set corner 33' east of existing 1" iron pipe.

2 NEW TIES 12-28-99 SS
 CORNER O.K. 10-11-75 SS
 MON OK RN-TH 8/29/80
 1 gone, NO New 5/30/85 D.K
 OK 1-29-90 K2-SS
 OK 8-8-94 CR-JM

CERTIFIED CORRECT:

Anthony B. Kiedrowski
 Registered Land Surveyor

DATE: July 31, 1974

TIE SKETCH

2-GONE, 2-NEW, 2-7-05-J6

All ties to nail and disc.

(Show at least four ties)

