

PUBLIC LAND SURVEY MONUMENT RECORD

TYPE OF MONUMENT: HARRISON
ADAMS COUNTY COORDINATES, NAD 83 (2007)

N. 216181.500

E. 525703.956

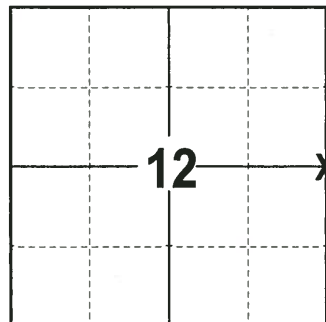
ELEVATION- DATUM

FIELD WORK DATE: 06/20/2017

BASIS FOR MONUMENT LOCATION

1978- PLS 878 FOUND NO EVIDENCE OF ANY PREVIOUS MONUMENTATION. SET HARRISON EQUIDISTANT AND BETWEEN NE AND SE CORNERS.

2017 - PLS 2994 FOUND HARRISON MONUMENT FLUSH WITH THE SURFACE, 2 TIES AND 2 WITNESSES. THE MONUMENT AGREES WITH THE EXISTING TIES AND WITNESSES. ACCEPTED HARRISON AS CORNER LOCATION, SET 3 NEW TIES AND RE-MEASURED TO EXISTING TIES AND WITNESSES.



LOCATION
(INDICATE CORNER BY "X")

SEAL:



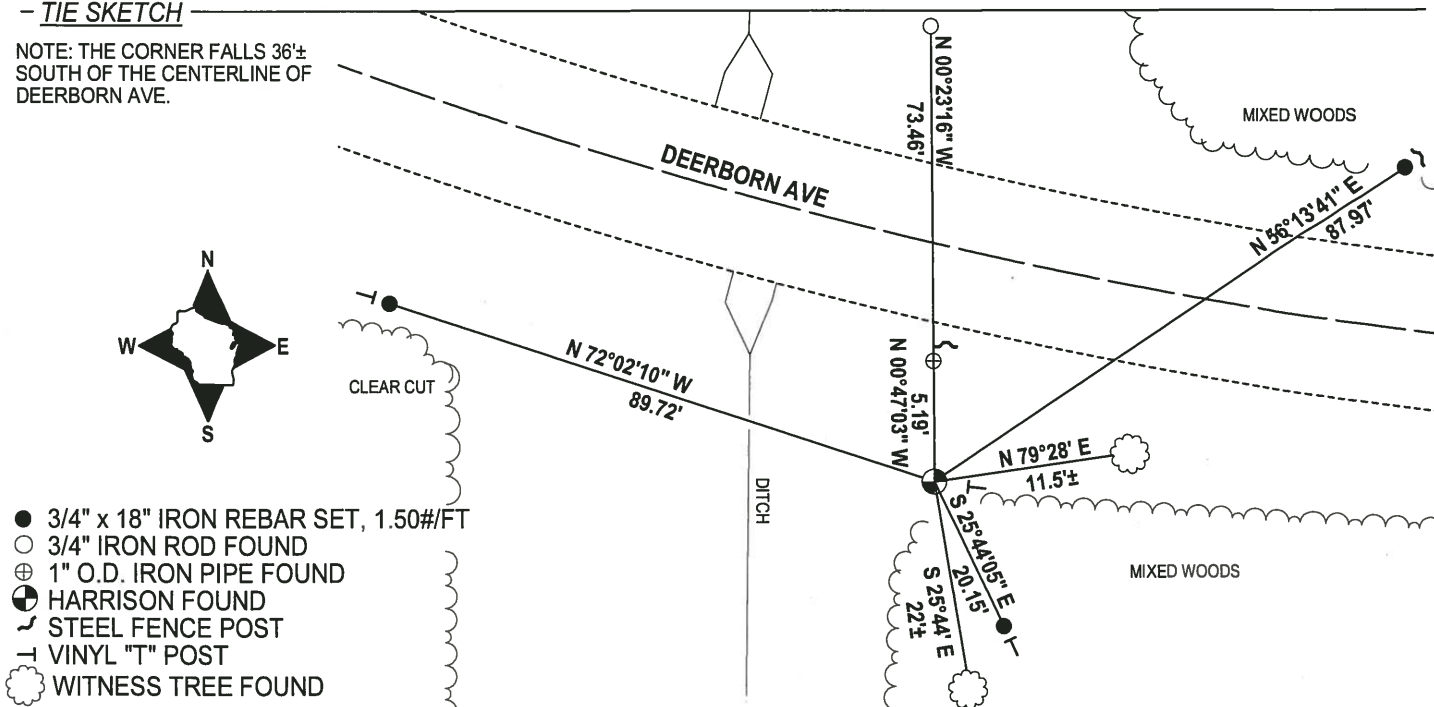
DATA SHOWN HERE ON THIS TIE SHEET IS CORRECT AND COMPLETE TO THE BEST OF MY KNOWLEDGE AND BELIEF.

PROFESSIONAL LAND SURVEYOR

DATE 6/26/17

- TIE SKETCH

NOTE: THE CORNER FALLS 36± SOUTH OF THE CENTERLINE OF DEERBORN AVE.



- 3/4" x 18" IRON REBAR SET, 1.50#/FT
- 3/4" IRON ROD FOUND
- ⊕ 1" O.D. IRON PIPE FOUND
- ⊗ HARRISON FOUND
- ┌ STEEL FENCE POST
- └ VINYL "T" POST
- ☼ WITNESS TREE FOUND

Government Land Corner Certificate

ADAMS County

TYPE OF MONUMENT: HARRISON

STATE PLANE COORDINATES: N _____
E _____

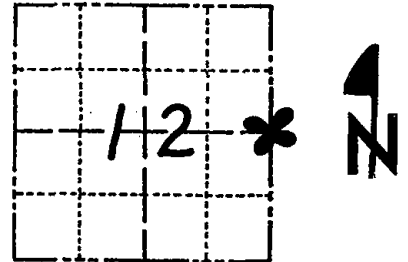
ELEVATION — M.S.L. DATUM: _____

THETA ANGLE: _____

FIELD BOOK: 57 PAGE 68

DRAWN BY: B. MERZ

CORNER NO. 40
SECTION 12
TOWN 17
RANGE 5



LOCATION
(Indicated by 'X')

BASIS FOR MONUMENT LOCATION

Show info such as: History of corner, with reference to Vol. and pg., dates, surveyor; exact description of monument replaced; if location computed, by taped or EDM traverse; landowner remarks, etc. (Use reverse side if necessary)

Set equidistant and on line between adjacent section corners. No evidence of any previous monumentation was found.

SEAL:



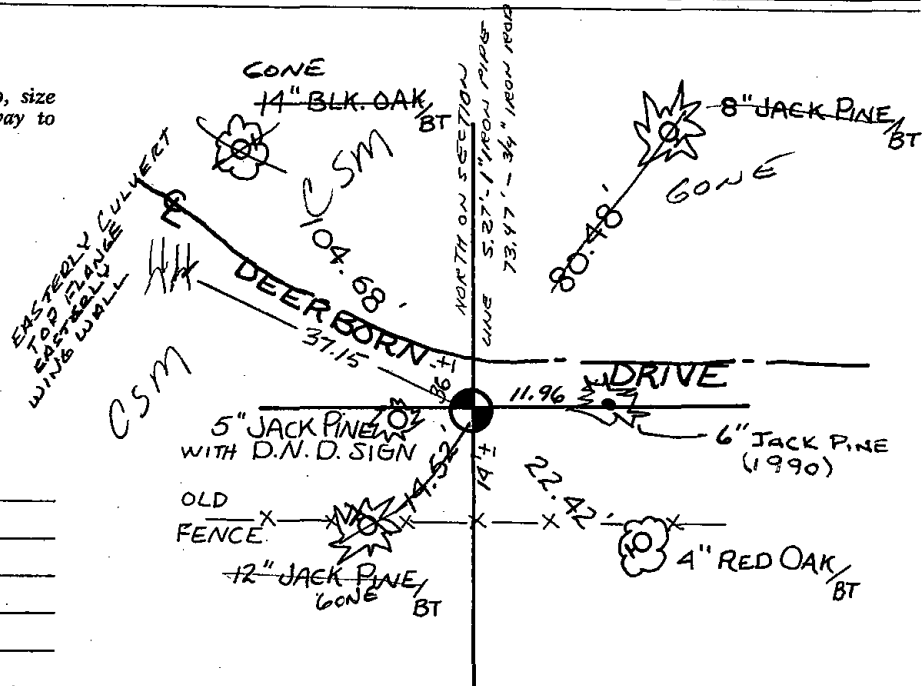
DATA SHOWN HERE ON
CERTIFIED CORRECT:

Anthony B. Kiedrowski
Registered Land Surveyor

DATE: 8-1-78

TIE SKETCH

Show at least four ties, also fence lines, roads, topo, size and type of witness trees' and if off road - best way to arrive at corner.



MAINTENANCE RECORD

| Date | Init. | Remarks |
|----------|--------|------------|
| 8/27/80 | TJH-RN | MON OK |
| 10-21-85 | MB-SS | 1 TIE GONE |
| 2-5-90 | K2-SS | 2 NEW TIES |
| 1-10-95 | JG-BB | ACK OK |
| 2-14-00 | SS | OK |
| 8-7-05 | JG | OK |
| 12-16-10 | SS | " |