

11 SECTION 17 TOWN 05 RANGE

ADAMS COUNTY

COUNTY CORNER NO: 51
 ROMPORTOL ID: 41705110000

PUBLIC LAND SURVEY MONUMENT RECORD

TYPE OF MONUMENT: HARRISON
 ADAMS COUNTY COORDINATES, NAD 83 (2007)

N. 213385.624

E. 520501.734

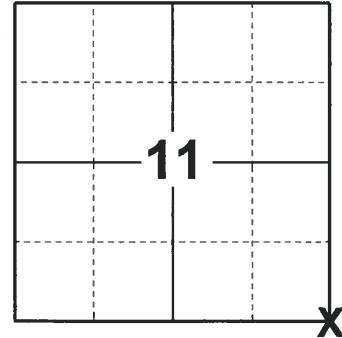
ELEVATION- _____ DATUM _____

FIELD WORK DATE: 01/02/2019

BASIS FOR MONUMENT LOCATION

1977 PLS 1103 RAN EDM/T2 TRAVERSE AROUND SECTION 11, AND MIDSTATES ASSOC. (JOHN BRENEMAN) TRAVERSED FOR MILE TO SOUTH AND EAST. COULD FIND NO EVIDENCE OF BEARING TREES (ORIGINAL OR REPLACEMENT) OR THE CORNER. AFTER CONSULTATION WITH JOHN BRENEMAN, WE CONCLUDED THAT THE CORNER BE LOCATED BY DOUBLING OVER DISTANCE BETWEEN OCCUPIED EAST QUARTER CORNER OF SEC. 14 AND OCCUPIED FORTY CORNER ¼ MILE NORTH OF EAST QUARTER CORNER, AND PLACING CORNER ON OLD FENCE LINE. THE DISTANCES FROM SOUTH MATCHED M.C. SMITH'S WELL, AND DISTANCE TO WEST AS WELL. DOES NOT MATCH LOCATION OF OCCUPIED ROAD TO NORTH EXACTLY, BUT DISTANCES TO NORTH AND EAST ARE QUITE REASONABLE. FENCE AT SOUTH ¼ CORNER OF SEC. 11 FITS QUITE WELL. SET HARRISON MONUMENT AND TIED OUT.

2019 - PLS 2675 FOUND A HARRISON MONUMENT 2" ABOVE THE GROUND SURFACE. FOUND NO EVIDENCE OF ANY OF THE EXISTING WITNESSES OR TIES. ACCEPTED THE HARRISON MONUMENT AS THE BEST EVIDENCE OF THE CORNER LOCATION. SET 4 NEW TIES AND MEASURED TO THE TIES.



LOCATION
 (INDICATE CORNER BY "X")

SEAL:

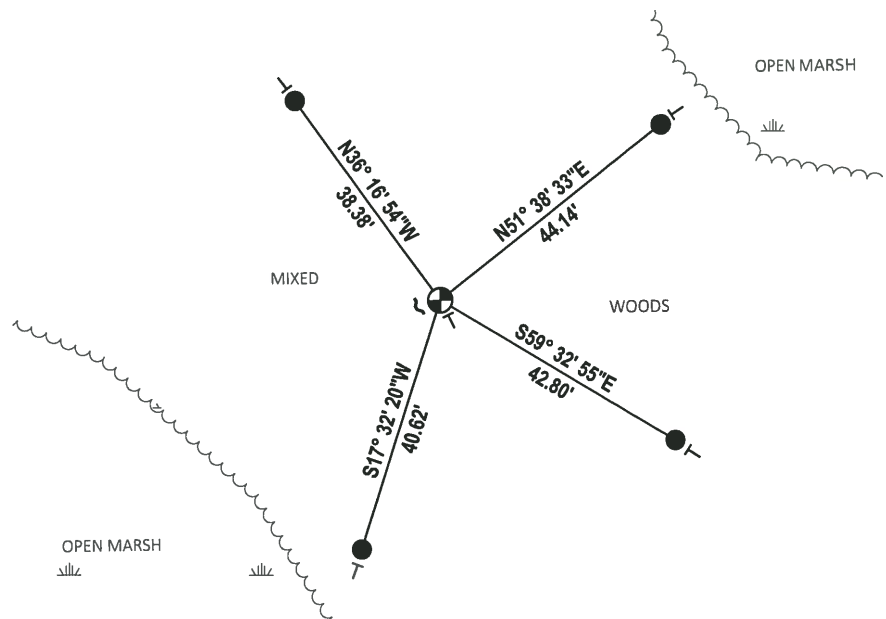
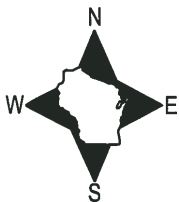


DATA SHOWN HERE ON THIS TIE SHEET IS CORRECT AND COMPLETE TO THE BEST OF MY KNOWLEDGE AND BELIEF.

PROFESSIONAL LAND SURVEYOR

DATE 1-18-19

TIE SKETCH

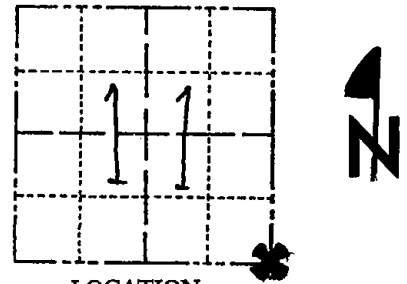


- SET 3/4" x 18" IRON REBAR, 1.50#/FT
- ⊕ FOUND HARRISON MONUMENT
- ┌ STEEL FENCE POST
- └ VINYL "T" POST

Government Land Corner Certificate

ADAMS County
 TYPE OF MONUMENT: Harrison
 STATE PLANE COORDINATES: N 43°57'07.1"
 HAND HELD GPS 2010 E 089°51'27.4"
 ELEVATION — M.S.L. DATUM: _____
 THETA ANGLE: _____
 FIELD BOOK: 58 PAGE 34
 DRAWN BY: SCOTT SORENSEN

CORNER NO. 51
 SECTION 11
 TOWN 17
 RANGE 5



LOCATION
(Indicated by 'X')

BASIS FOR MONUMENT LOCATION

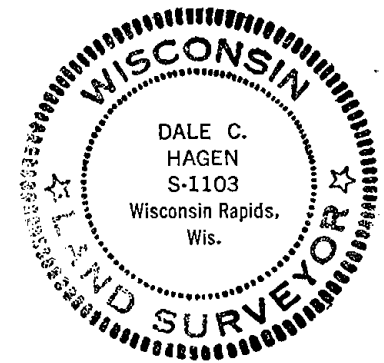
Show info such as: History of corner, with reference to Vol. and pg., dates, surveyor; exact description of monument replaced; if location computed, by taped or EDM traverse; landowner remarks, etc. (Use reverse side if necessary)

Ran EDM/T2 traverse around Section 11, and Midstates Assoc. (John Breneman) traversed for mile to South and East. Could find no evidence of bearing trees (Orig or replacement) or the corner.

After consultation with John Breneman, we concluded that the corner be located by doubling over distance between occupied East Quarter corner of Sec. 14 and occupied Forty corner 1/4 mile North of East Quarter corner, and placing corner on old fence line. The distances from South matched M.C. Smith's well, and distance to West as well. Does not match location of occupied road to North exactly, but distances to North and East are quite reasonable. Fence at South 1/4 corner of Sec. 11 fits quite well.

Set Harrison on 9-29-1977.

SEAL:



DATA SHOWN HERE ON
CERTIFIED CORRECT:

Dale C. Hagen
Registered Land Surveyor

DATE: 9-30-1977

TIE SKETCH

Show at least four ties, also fence lines, roads, topo, size and type of witness trees' and if off road - best way to arrive at corner.

NOTE

- 1) Ties in trees to nail in disc.

DRIVE IN FROM 15TH AVE OFF OF "J"

MAINTENANCE RECORD

Date	Init.	Remarks
9/30/80	BS-KV	MON. & TIES OK
10-21-85	MB-SS	O.K.
1-29-90	K2-SS	OK
1-3-95	SS-BS	OK
1-10-06	SG-SS	OK
11-15-10	GR	OK

