

12 SECTION    17 TOWN    05 RANGE

# ADAMS COUNTY

COUNTY CORNER NO: 52  
ROMPORTOL ID: 41705120020

## PUBLIC LAND SURVEY MONUMENT RECORD

TYPE OF MONUMENT: HARRISON  
ADAMS COUNTY COORDINATES, NAD 83 (2007)

N. 213457.323

E. 523117.211

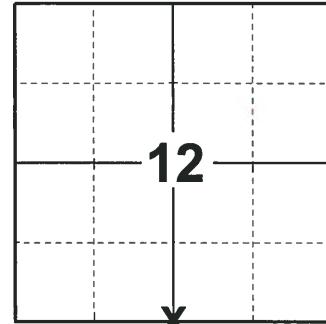
ELEVATION- \_\_\_\_\_ DATUM \_\_\_\_\_

FIELD WORK DATE: 12/20/2018

### BASIS FOR MONUMENT LOCATION

1977 - PLS 878 EXCAVATED WITH A BACKHOE AND FOUND A 4" X 6" X 16" SANDSTONE. LOWERED STONE AND PLACED HARRISON ON TOP. TIED OUT CORNER.

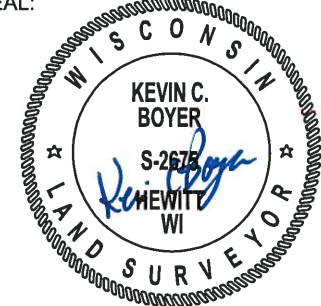
2019 - PLS 2675 FOUND A HARRISON 2" BELOW THE ROAD SURFACE AND 1 TIE. THE MONUMENT AGREES WITH THE EXISTING TIE. ACCEPTED THE HARRISON MONUMENT AS THE CORNER LOCATION. SET 3 NEW TIES AND MEASURED TO THE TIES.



**LOCATION**

(INDICATE CORNER BY "X")

SEAL:



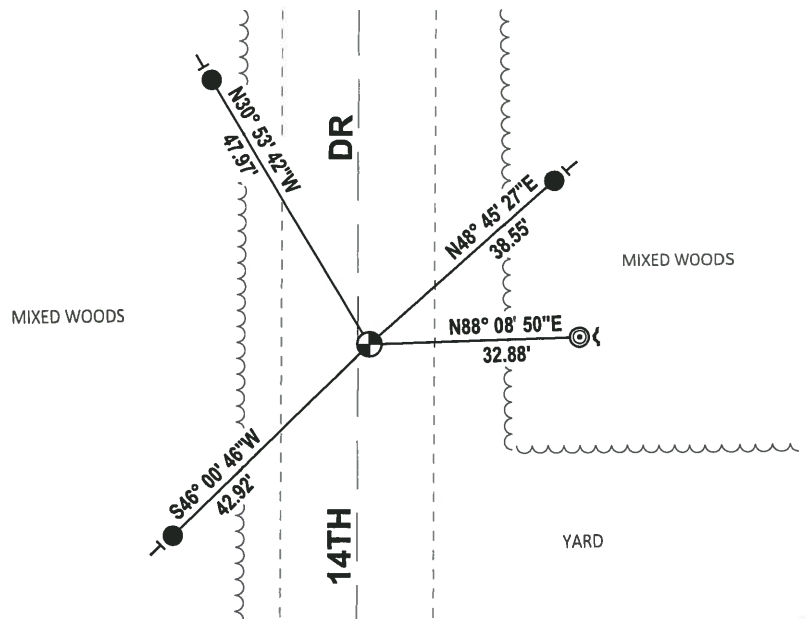
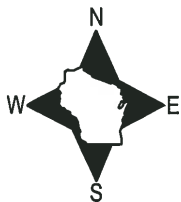
DATA SHOWN HERE ON THIS TIE SHEET IS CORRECT AND COMPLETE TO THE BEST OF MY KNOWLEDGE AND BELIEF.

PROFESSIONAL LAND SURVEYOR

DATE 1-18-19

### - TIE SKETCH

NOTE: THE CORNER FALLS 2± EAST OF THE CENTERLINE OF 14TH DR.



- SET 3/4" x 18" IRON REBAR, 1.50#/FT
- ⊙ FOUND 2-3/8" O.D. IRON PIPE
- ⊕ FOUND HARRISON MONUMENT
- ~ STEEL FENCE POST
- VINYL "T" POST

ADAMS COUNTY

Survey Monument Record

TYPE OF MONUMENT: Harrison Standard

STATE PLANE COORDINATES: N. \_\_\_\_\_

E. \_\_\_\_\_

ELEVATION — M.S.L. DATUM: \_\_\_\_\_

THETA ANGLE: \_\_\_\_\_

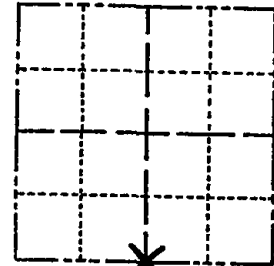
FIELD BOOK: \_\_\_\_\_ PAGE \_\_\_\_\_

CORNER NO. 422

SECTION 12

TOWN 17

RANGE 5



LOCATION  
(Indicated by 'X')

SEAL:



BASIS FOR MONUMENT LOCATION

(Use reverse side if necessary)

Show info such as: History of corner, with reference to Vol. and pg, dates, surveyor; exact description of monument replaced; if location computed, by taped or EDM traverse; landowner remarks, etc.

Excavated with backhoe. Found 4" x 6" x 16" sandstone. Lowered stone and placed Harrison on top.

OK 2-14-00 SS  
COR. O.K. 10-11-75 S.S.  
MON OK-NEW TIES 8/27/80 RN-TH  
ALL OK 5/30/85 DK.  
2-GONE, 2-NEW 6-20-90 JG  
ALL OK 8-3-94 JG-BS  
1-GONE, 1-NEW, 2-7-05 JG

CERTIFIED CORRECT:

Registered Land Surveyor

DATE: July 31, 1974

*Anthony B. Kiedrowski*

TIE SKETCH

All ties to nail and disc.

(Show at least four ties)

