

16 SECTION 17 TOWN 05 RANGE

ADAMS COUNTY

COUNTY CORNER NO: 57
ROMPORTOL ID: 41705162000

PUBLIC LAND SURVEY MONUMENT RECORD

TYPE OF MONUMENT: HARRISON (BROKEN-TOP)
ADAMS COUNTY COORDINATES, NAD 83 (2007)

N. 210644.266
E. 509947.717

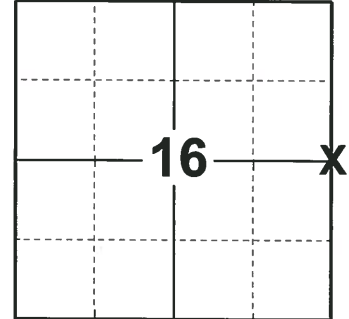
ELEVATION- _____ DATUM _____

FIELD WORK DATE: 01/03/2019

BASIS FOR MONUMENT LOCATION

1980 PLS 1444 CALCULATED THE CORNER LOCATION EQUIDISTANT AND ON LINE BETWEEN SECTION CORNERS. NO EVIDENCE OF ORIGINAL CORNER OR ANY RESURVEY CORNER. SET A HARRISON MONUMENT AT THE CALCULATED LOCATION AND TIED OUT.

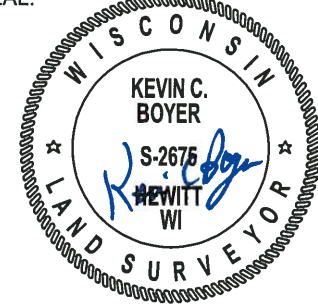
2019 - PLS 2675 FOUND A HARRISON MONUMENT WITH A BROKEN-TOP 6" BELOW THE GROUND SURFACE AND 2 WITNESS TREES. THE MONUMENT AGREES WITH THE EXISTING WITNESS TREES. ACCEPTED THE HARRISON MONUMENT WITH A BROKEN-TOP AS THE CORNER LOCATION. SET 4 NEW TIES AND MEASURED TO THE TIES AND WITNESS TREES.



LOCATION

(INDICATE CORNER BY "X")

SEAL:



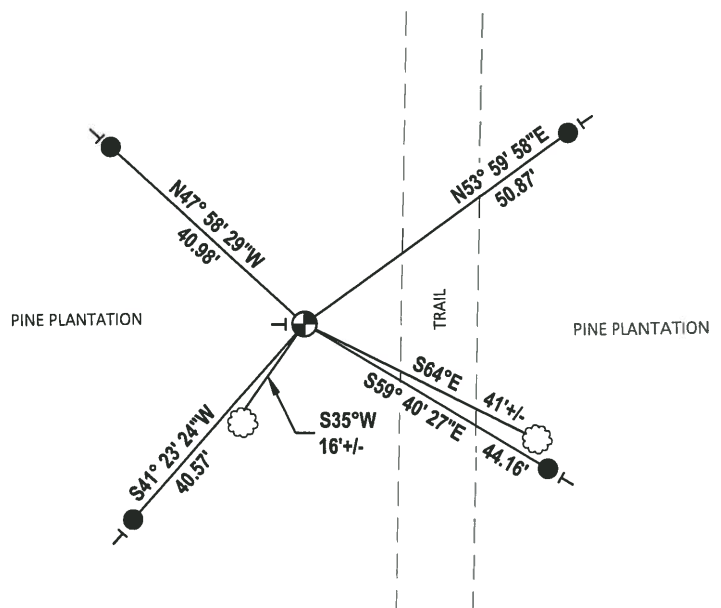
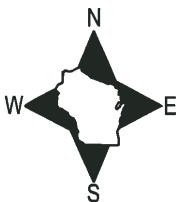
DATA SHOWN HERE ON THIS TIE SHEET IS CORRECT AND COMPLETE TO THE BEST OF MY KNOWLEDGE AND BELIEF.

PROFESSIONAL LAND SURVEYOR

DATE 1-18-19

TIE SKETCH

NOTE: THE CORNER FALLS 16'± WEST OF THE TRAIL.

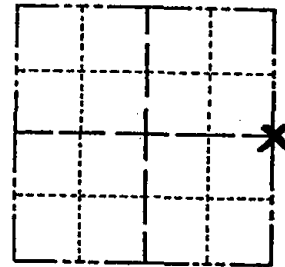


- SET 3/4" x 18" IRON REBAR, 1.50#/FT
- ⊕ FOUND HARRISON MONUMENT (BROKEN-TOP)
- └ VINYL "T" POST
- ☁ WITNESS TREE

Government Land Corner Certificate

ADAMS County
 TYPE OF MONUMENT: HARRISON
 STATE PLANE COORDINATES: N _____
 E _____
 ELEVATION — M.S.L. DATUM: _____
 THETA ANGLE: _____
 FIELD BOOK: 77 PAGE 114
 DRAWN BY: LANCE HABECK

CORNER NO. 57
 SECTION 16
 TOWN 17
 RANGE 5



LOCATION
(Indicated by 'X')

BASIS FOR MONUMENT LOCATION

Show info such as: History of corner, with reference to Vol. and pg., dates, surveyor; exact description of monument replaced; if location computed, by taped or EDM traverse; landowner remarks, etc. (Use reverse side if necessary)

This corner was set equidistant and on line between section corners. No evidence of original corner or any resurvey corner.

ALL OK 7-2-85 DK
 OK 1-29-90 KZ-SS

2 GONE - 2 NEW 1-3-95 BS-SS
 AREA PULPED & REPLANTED - 2 TIES IN
 DEAD TREES REMAIN - SHOULD SPRING
 STEEL POST NEXT TRIP IN - 1-6-00 SIS
 2 NEW TIES - TOP BROKEN OFF MON 2-10-05 JG-SS
 STEEL POST/SIGN IMMEDIATELY WEST
 1 NEW TIE 2-16-10 SS

SEAL:



DATA SHOWN HERE ON
CERTIFIED CORRECT:


 Registered Land Surveyor

DATE: 11/5/80

TIE SKETCH

Show at least four ties, also fence lines, roads, topo, size and type of witness trees and if off road - best way to arrive at corner.

